

VOR/DME ALW <b>116.4</b> Chan <b>111</b>	APP CRS <b>021°</b>	Rwy Ldg <b>6527</b> TDZE <b>1175</b> Apt Elev <b>1194</b>
--	------------------------	---

# VOR RWY 2

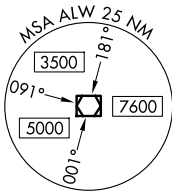
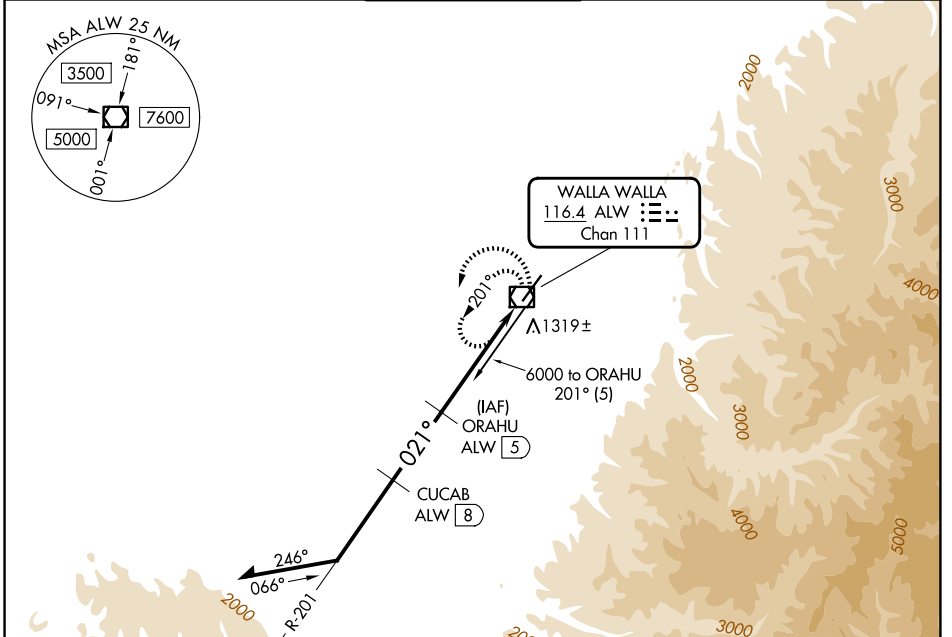
WALLA WALLA RGNL (ALW)

DME required.

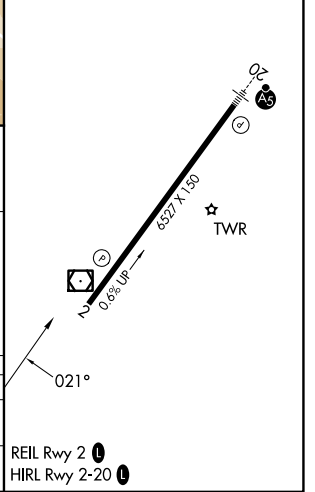
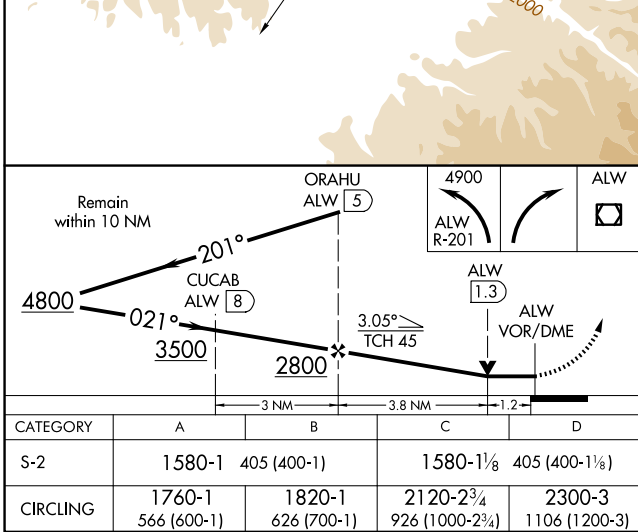
**⚠** Rwy 2 helicopter visibility reduction below 3/4 SM NA.

MISSED APPROACH: Climbing left turn to 4900 on ALW VOR/DME R-201 within 10 DME then right turn direct ALW VOR/DME and hold, continue climb-in-hold to 4900.

ASOS <b>135.875</b>	SPOKANE APP CON ★ <b>133.15 379.15</b>	WALLA WALLA TOWER ★ <b>118.5 (CTAF) 289.4</b>	GND CON <b>121.6 289.4</b>	UNICOM <b>122.95</b>
------------------------	---	--	-------------------------------	-------------------------



ELEV 1194	<b>D</b>	TDZE 1175
-----------	----------	-----------



CATEGORY	A	B	C	D
S-2	1580-1	405 (400-1)	1580-1 1/8	405 (400-1 1/8)
CIRCLING	1760-1 566 (600-1)	1820-1 626 (700-1)	2120-2 3/4 926 (1000-2 3/4)	2300-3 1106 (1200-3)

NW-1, 11 JUN 2026 to 09 JUL 2026

NW-1, 11 JUN 2026 to 09 JUL 2026