

HI-TACAN Z RWY 25

TACAN NUW Chan 85	APCH CRS 254°	Rwy Idg 7999	TDZE 28	Arprt Elev 47
----------------------	------------------	-----------------	------------	------------------

[USN]

WHIDBEY ISLAND NAS (AULT FLD) (KNUW)

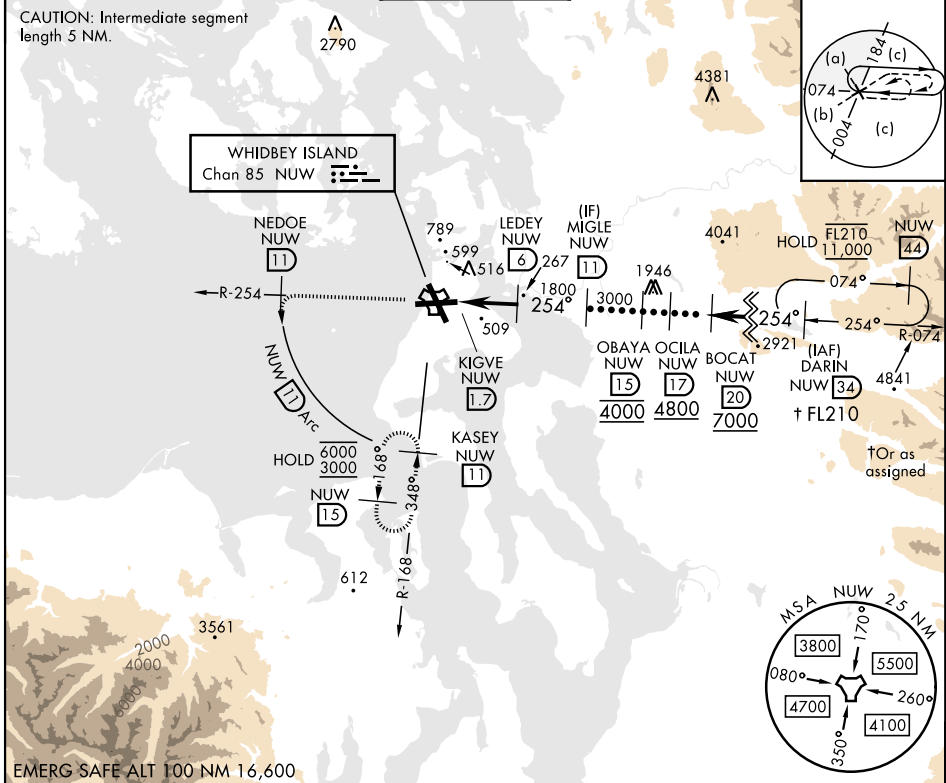
▼ * When ALS inop, increase CAT CDE vis to 2 miles.



MISSED APPROACH: Climb to 3000 via NUW TACAN R-254 to NEDOE, then arc SW of NUW via 11 DME arc to KASEY and hold.

ATIS 134.15 281.5	APP CON 120.7 270.8 (E) 118.2 285.65 (W)	TOWER 127.9 340.2	GND CON 121.75 336.4	ASR/PAR
----------------------	--	----------------------	-------------------------	---------

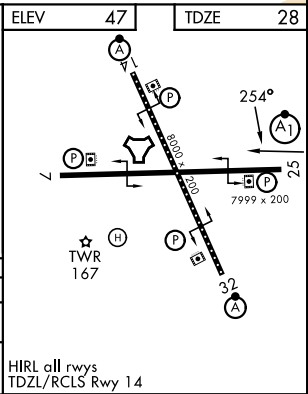
CAUTION: Intermediate segment length 5 NM.



NW-1, 11 JUN 2026 to 09 JUL 2026

NW-1, 11 JUN 2026 to 09 JUL 2026

3000 NUW R-254	NEDOE NUW (11)	NUW (11) Arc	MIGLE NUW (11)
NUW TACAN	KIGVE NUW (1.7)	NUW (3)	LEDEY NUW (6)
4.3 NM			
CATEGORY	C	D	E
S-25*	760-1 $\frac{5}{8}$	732	(800-1 $\frac{5}{8}$)
CIRCLING	860-2 $\frac{1}{2}$ 813 (900-2 $\frac{1}{2}$)	900-2 $\frac{3}{4}$ 853 (900-2 $\frac{3}{4}$)	1200-3 1153 (1200-3)



HI-TACAN Z RWY 25