

HI-TACAN Z RWY 32

TACAN Chan 85	APCH CRS 311°	Rwy Ldg TDZE 47 Arprt Elev 47
-------------------------	-------------------------	---

[USN]

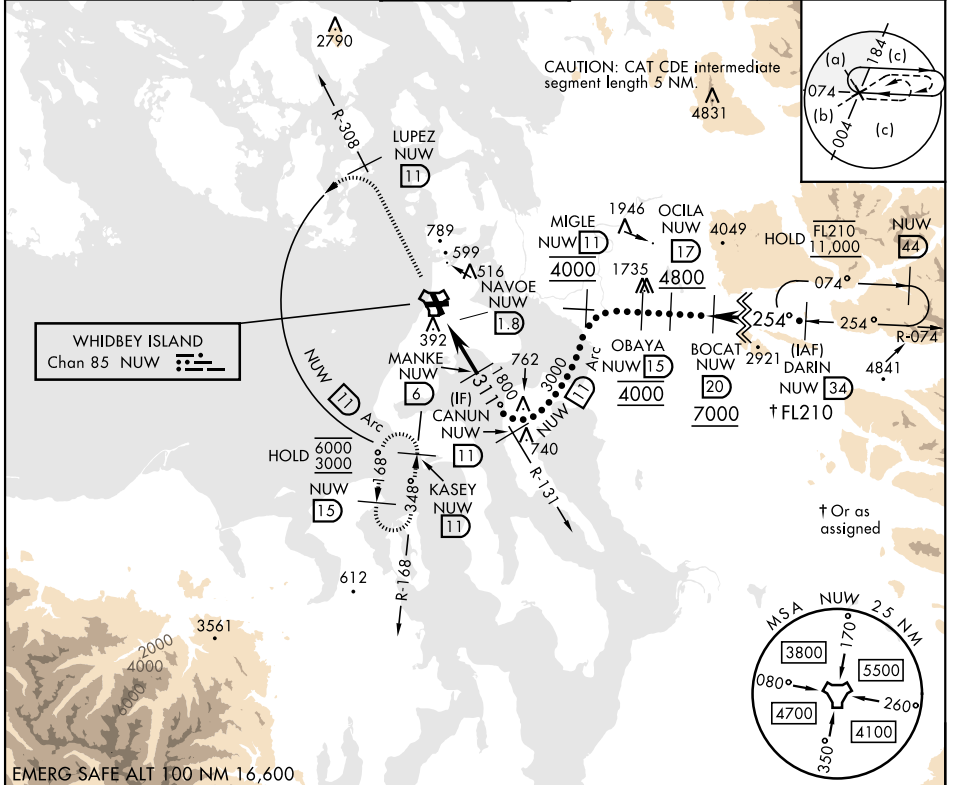
WHIDBEY ISLAND NAS (AULT FLD) (KNUW)

ALSF-2

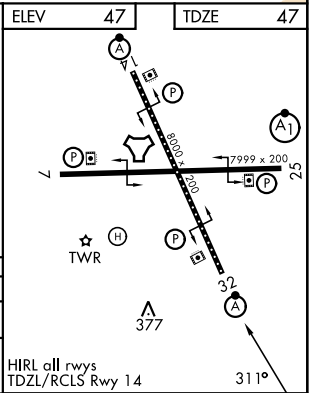
 MISSED APPROACH: Climb to 3000 via NUW TACAN R-308 to LUPEZ, then arc W of NUW via 11 DME Arc to KASEY and hold.

* When ALS inop, increase CAT CDE vis to 1 3/8 miles.

ATIS 134.15 281.5	APP CON 120.7 270.8 (E) 118.2 285.65 (W)	TOWER 127.9 340.2	GND CON 121.75 336.4	ASR/PAR
-----------------------------	--	-----------------------------	--------------------------------	---------



3000 NUW R-308	LUPEZ NUW (11)	NUW Arc (11)	
NUW TACAN	NUW (2.8)	MANKE NUW (6)	
NAVOE NUW (1.8)	CANUN NUW (11) 3000		
4.2 NM			
CATEGORY	C	D	E
S-32*	680-1 3/8	633 (700-1 3/8)	
CIRCLING	860-2 1/2 813 (900-2 1/2)	900-2 3/4 853 (900-2 3/4)	1200-3 1153 (1200-3)



HI-TACAN Z RWY 32

NW-1, 11 JUN 2026 to 09 JUL 2026

NW-1, 11 JUN 2026 to 09 JUL 2026