

NASWI THREE (OBSTACLE) DEPARTURE

WHIDBEY ISLAND NAS (AULT FLD) (KNUW)

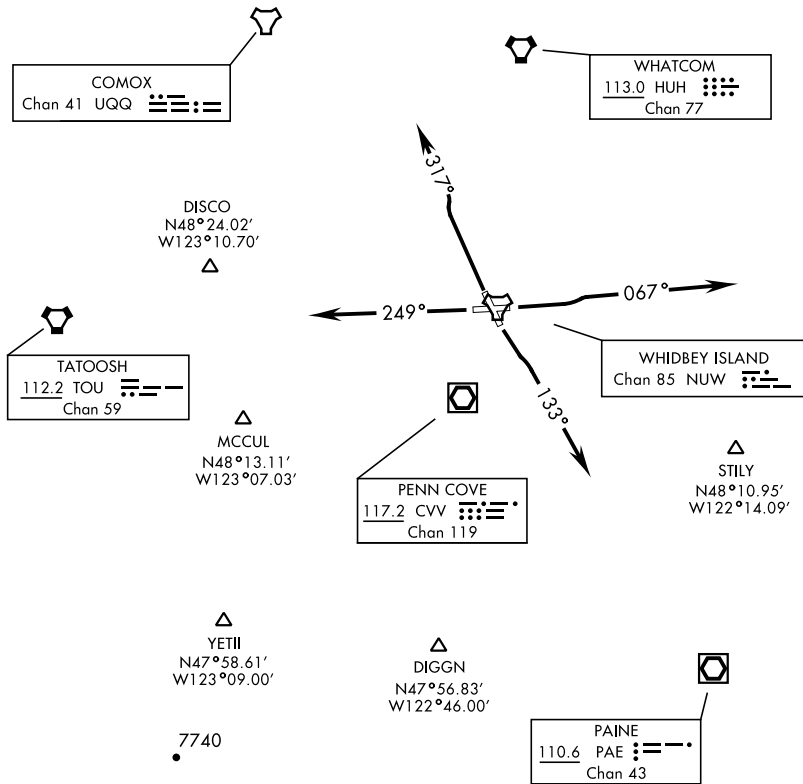
OAK HARBOR, WASHINGTON

ATIS 134.15 281.5
 CLNC DEL
 135.1 379.9
 GND CON
 121.75 336.4
 WHIDBEY TOWER
 127.9 340.2
 WHIDBEY DEP CON
 120.7 270.8 EAST
 118.2 285.65 WEST

[USN]

Rwy	Knots	60	120	180	240	300	360
7	V/V(fpm)	270	540	810	1080	1350	1620
14	V/V(fpm)	254	508	762	1016	1270	1524

Minimum Climb Rate to 500



NOTE: Chart not to scale

DEPARTURE ROUTE DESCRIPTION

All RWYS: If control instructions are not received by 10 DME of NUW TACAN, climb to 3000, intercept the NUW 11 DME ARC to join assigned route.

RWY 7: Climb to 2000 via heading 067°, then RADAR vectors to assigned route.

RWY 14: Climbing left turn to 2000 via heading 133°, then RADAR vectors to assigned route.

RWY 25: Climb to 2000 via heading 249°, then RADAR vectors to assigned route.

RWY 32: Climb to 2000 via heading 317°, then RADAR vectors to assigned route.

NASWI THREE (OBSTACLE) DEPARTURE

Orig 31OCT24

OAK HARBOR, WASHINGTON
 WHIDBEY ISLAND NAS (AULT FLD) (KNUW)

NW-1, 11 JUN 2026 to 09 JUL 2026

NW-1, 11 JUN 2026 to 09 JUL 2026