

OAK HARBOR, WASHINGTON

# TACAN Y RWY 7

TACAN Chan <b>85</b>	APCH CRS <b>058°</b>	Rwy Idg TDZE Arprt Elev <b>7999</b> <b>25</b> <b>47</b>
-------------------------	-------------------------	--

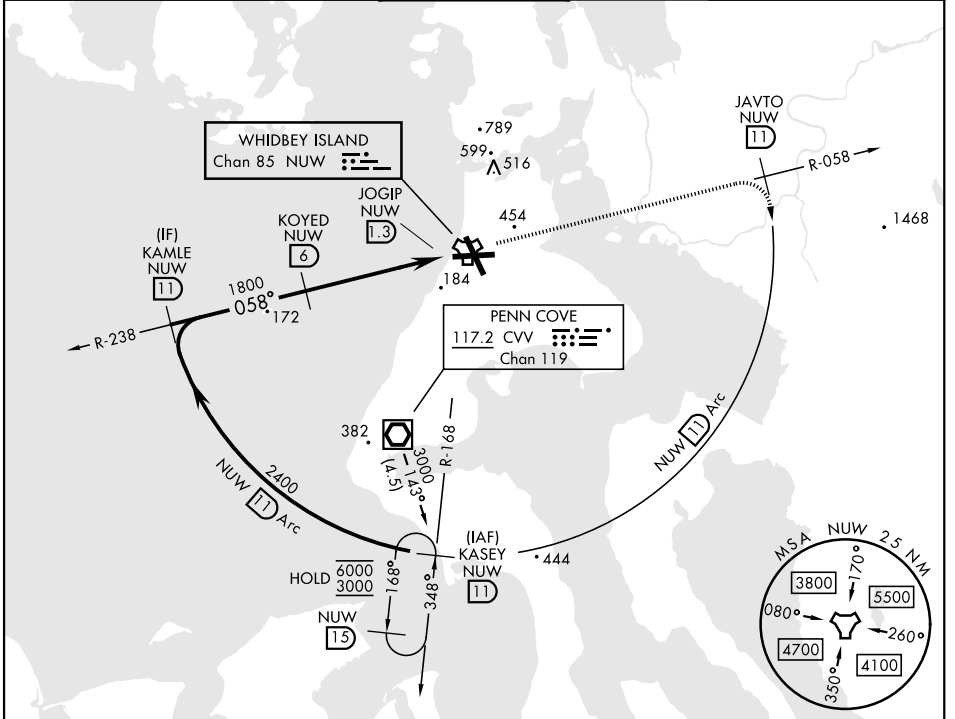
[USN]

WHIDBEY ISLAND NAS (AULT FLD) (KNUW)

CAUTION: CAT CDE intmed seg length 5 NM

MISSED APPROACH: Climb to 3000 via NUW TACAN R-058 to JAVTO, then arc SE of NUW via 11 DME Arc to KASEY and hold.

ATIS <b>134.15 281.5</b>	APP CON <b>120.7 270.8</b> (E) <b>118.2 285.65</b> (W)	TOWER <b>127.9 340.2</b>	GND CON <b>121.75 336.4</b>	ASR/PAR
-----------------------------	--	-----------------------------	--------------------------------	---------

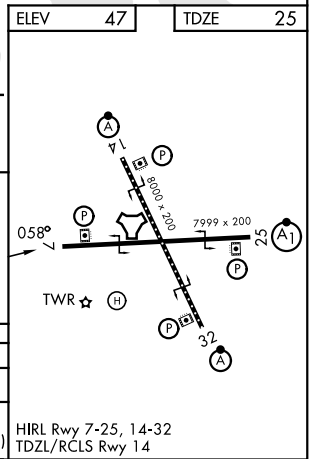
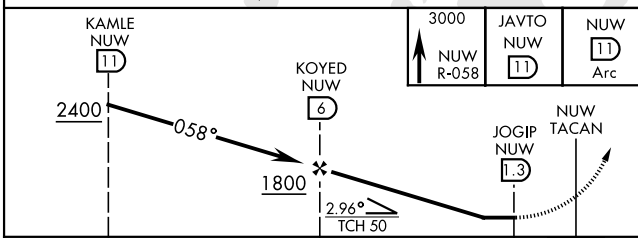


NW-1, 11 JUN 2026 to 09 JUL 2026

NW-1, 11 JUN 2026 to 09 JUL 2026

ELEV	47	TDZE	25
------	----	------	----

EMERG SAFE ALT 100 NM 16,600



CATEGORY	A	B	C	D	E
S-7	440/55 415 (400-1)		440/60 415 (400-1½)		
CIRCLING	760-1 713 (800-1)		860-2½ 813 (900-2½)	900-2¾ 853 (900-2¾)	1200-3 1153 (1200-3)

OAK HARBOR, WASHINGTON

48°21'N-122°39'W

WHIDBEY ISLAND NAS (AULT FLD) (KNUW)

Amdt 5 19FEB26

# TACAN Y RWY 7