

APP CRS	Rwy Ldg	<b>7604</b>
<b>094°</b>	TDZE	<b>1099</b>
	Apt Elev	<b>1099</b>

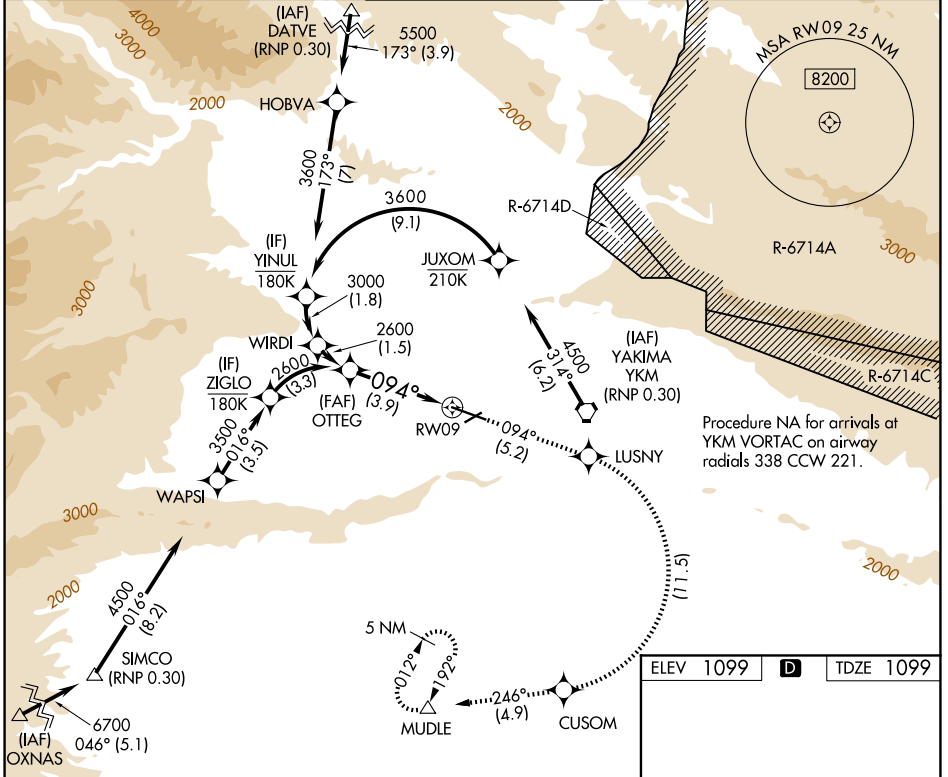
# RNAV (RNP) RWY 9

YAKIMA AIR TRML/MCALLISTER FLD (YKM)

**RF required. GPS required. For uncompensated Baro-VNAV systems, procedure NA below -17°C (2°F) or above 45°C (113°F).**  
 \*Missed approach requires a minimum climb of 425 feet per NM to 3000.

**MISSED APPROACH:** Climb to 5100 on track 094° to LUSNY right turn to CUSOM and on track 246° to MUDLE and hold.

ATIS <b>125.25</b>	SPOKANE APP CON* <b>123.8 263.15</b>	YAKIMA TOWER* <b>133.25 (CTAF) 257.8</b>	GND CON <b>121.9</b>	UNICOM <b>122.95</b>
-----------------------	---	---	-------------------------	-------------------------



NW-1, 11 JUN 2026 to 09 JUL 2026

NW-1, 11 JUN 2026 to 09 JUL 2026

OTTEG 2600 GP 3.50° TCH 57 See planview for multiple IF locations.		5100 ↑ tr 094°	LUSNY ✧	CUSOM ↷	MUDLE tr 246° △
VGS1 and RNAV glidepath not coincident (VGS1 Angle 3.00/TCH 54).					
3.9 NM					
CATEGORY	A	B	C	D	
RNP 0.30 DA*	1473-1 374 (400-1)			NA	
RNP 0.30 DA	1934-2½ 835 (900-2½)			NA	

ELEV 1099 **D** TDZE 1099

TWR  
 -0.7% UP  
 7604 X 150  
 5% UP  
 3835 X 150  
 27  
 AS

## AUTHORIZATION REQUIRED

MRL Rwy 4-22  
 HIRL Rwy 9-27  
 REL Rws 4, 9, and 22