

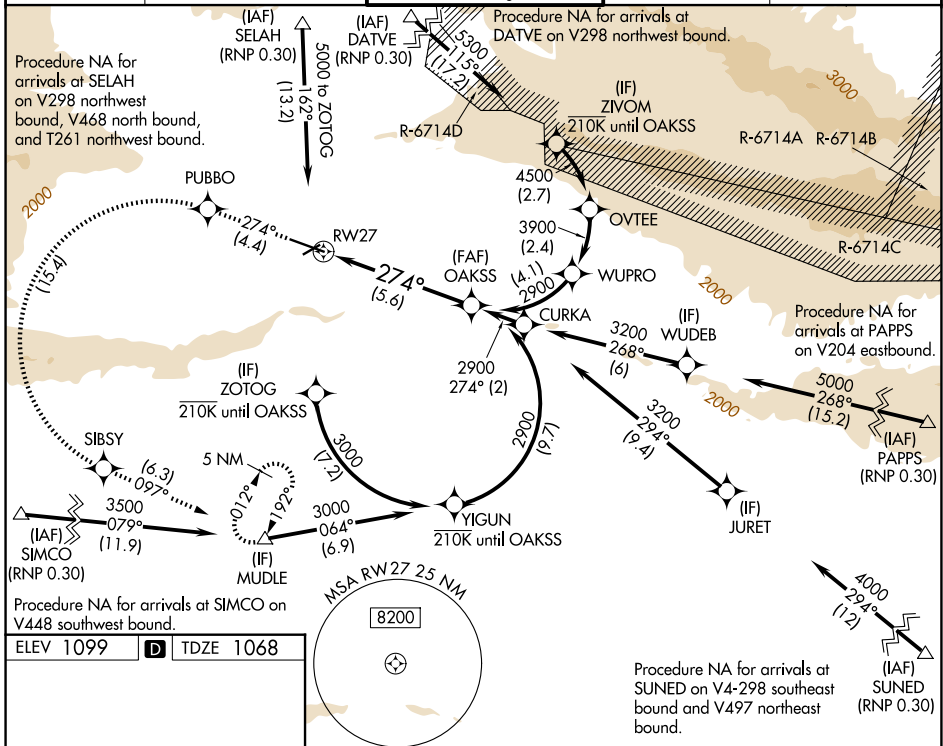
APP CRS 274°	Rwy Ldg TDZE Apt Elev	7604 1068 1099
------------------------	-----------------------------	---

RNAV (RNP) Y RWY 27

YAKIMA AIR TRML/MCALLISTER FLD (YKM)

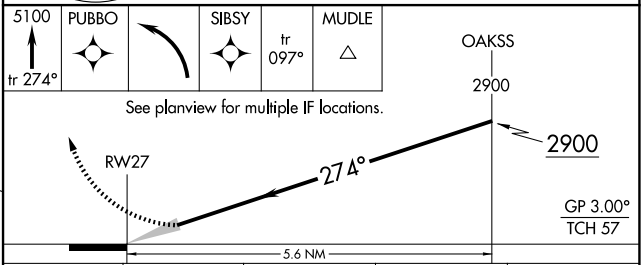
RNP APCH - GPS. From MUDLE or OVTEE or YIGUN: RF.	MALSR 	MISSED APPROACH: Climb to 5100 on track 274° to PUBBO left turn to SIBSY and on track 097° to MUDLE and hold. *Missed approach requires minimum climb of 425 feet per NM to 3400.
<p>▼ For uncompensated Baro-VNAV systems, procedure NA below -15°C or above 54°C. DATVE transition NA when R-6714 A, C, D active. For inop ALS, increase RNP 0.30* all Cats visibility to RVR 5500 and RNP 0.30 all Cats to 2½ SM.</p>		

ATIS 125.25	SPOKANE APP CON * 123.8 263.15	YAKIMA TOWER * 133.25 (CTAF) 0 257.8	GND CON 121.9	UNICOM 122.95
-----------------------	--	--	-------------------------	-------------------------



ELEV 1099 **D** TDZE 1068

MIRL Rwy 4-22
HIRL Rwy 9-27 **1**
REIL Rwy 4, 9, and 22



CATEGORY	A	B	C	D
RNP 0.30 DA*		1418/30	350 (400-5%)	
RNP 0.30 DA		1845-1¾	777 (800-1¾)	

AUTHORIZATION REQUIRED

NW-1, 11 JUN 2026 to 09 JUL 2026

NW-1, 11 JUN 2026 to 09 JUL 2026