

WAAS CH 90512 W27A	APP CRS 274°	Rwy Ldg 7604 TDZE 1068 Apt Elev 1099
--	------------------------	---

RNAV (GPS) X RWY 27

YAKIMA AIR TRML/MCALLISTER FLD (YKM)

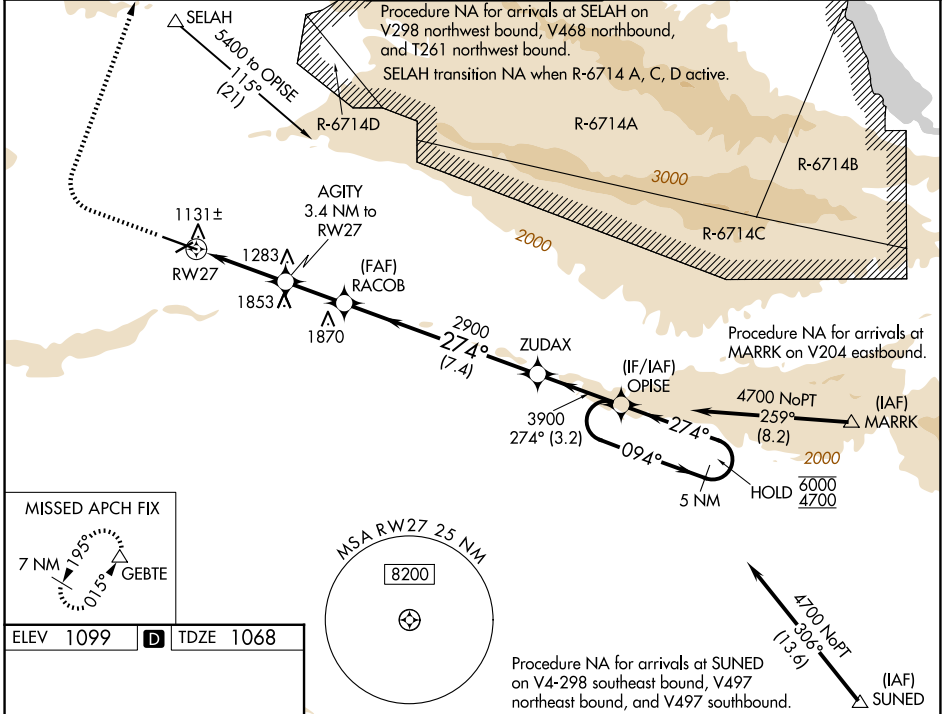
RNP APCH.

▼ Circling NA south of Rws 9 and 27.
 ▲ For inop ALS, increase LPV all Cats visibility to 1¾ SM.
 *RVR 1800 authorized with use of FD or AP or HUD to DA.

MALSRL
 AS

MISSED APPROACH: Climb to 2100 then climbing right turn to 7000 direct GEBTE and hold. Continue climb-in-hold to 7000. *Missed approach requires minimum climb of 300 feet per NM to 3700. #Missed approach requires minimum climb of 300 feet per NM to 4900.

ATIS 125.25	SPOKANE APP CON* 123.8 263.15	YAKIMA TOWER* 133.25 (CTAF) 0 257.8	GND CON 121.9	UNICOM 122.95
-----------------------	---	---	-------------------------	-------------------------



ELEV 1099	D	TDZE 1068
-----------	----------	-----------

MIRL Rwy 4-22	HIRL Rwy 9-27	REIL Rws 4, 9, and 22
---------------	---------------	-----------------------

2100	7000	GEBTE	OPISE 5 NM Holding Pattern	
*LNAV only		AGITY 3.4 NM to RW27	RACOB 2900	ZUDAX 2900
0.9 NM to RW27		RW27	2180	OPISE 5 NM Holding Pattern
0.9 NM	2.5 NM	2.2 NM	7.4 NM	3.2 NM
CATEGORY	A	B	C	D
LPV DA*	1268/24		200 (200-½)	
LPV DA	1668-1¼		600 (600-1¼)	
LNAV MDA#	1400/24	332 (400-½)	1400/26	332 (400-½)
LNAV MDA	1720/24	652 (700-½)	1720-1¾	652 (700-1¾)
CIRCLING	1720-1	621 (700-1)	1880-2¼	2280-3
			781 (800-2¼)	1181 (1200-3)

NW-1, 11 JUN 2026 to 09 JUL 2026

NW-1, 11 JUN 2026 to 09 JUL 2026