

VORTAC YKM <b>116.0</b> Chan 107	APP CRS <b>244°</b>	Rwy Ldg TDZE Apt Elev	<b>7604</b> <b>1068</b> <b>1099</b>
--	------------------------	-----------------------------	---

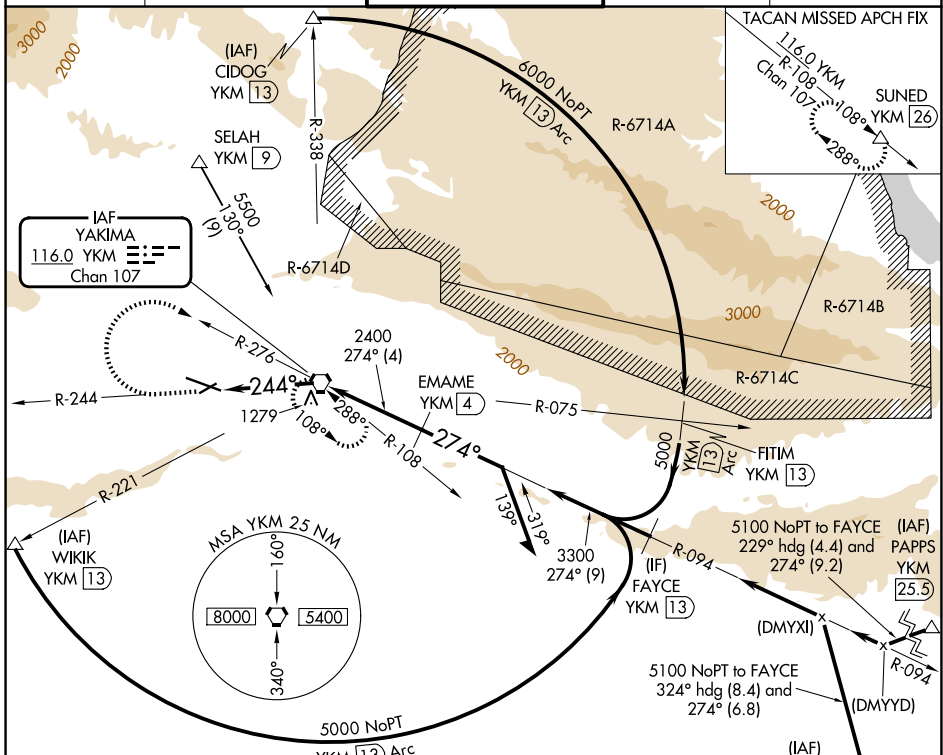
# VOR/DME or TACAN RWY 27

YAKIMA AIR TRML/MCALLISTER FLD (YKM)

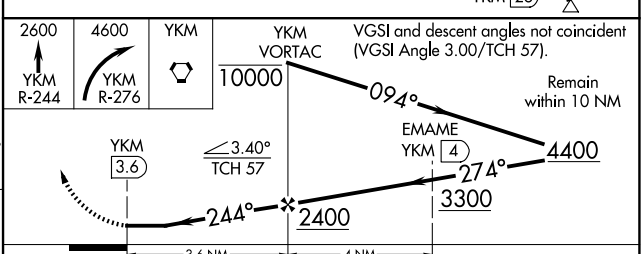
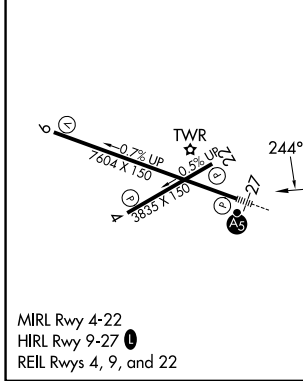
**⚠** Inoperative table does not apply. Circling NA south of Rwy 9-27. When local altimeter setting not received, procedure NA.

**MISSED APPROACH:** Climb to 2600 via YKM VORTAC R-244, then climbing right turn to 4600 via YKM VORTAC R-276 to YKM VORTAC and hold, continue climb-in-hold to 4600 (TACAN aircraft, continue climb to 5000 via YKM VORTAC R-108 to SUNED/YKM 26 DME and hold west, right turns, 108° inbound).

ATIS <b>125.25</b>	SPOKANE APP CON* <b>123.8 263.15</b>	YAKIMA TOWER* <b>133.25 (CTAF) 257.8</b>	GND CON <b>121.9</b>	UNICOM <b>122.95</b>
-----------------------	---	---	-------------------------	-------------------------



ELEV 1099	<b>D</b>	TDZE 1068
-----------	----------	-----------



CATEGORY	A	B	C	D
S-27	2100/60 1032 (1100-1¼)	2100-1½ 1032 (1100-1½)	2100-3	1032 (1100-3)
CIRCLING	2100-1¼ 1001 (1100-1¼)	2100-1½ 1001 (1100-1½)	2100-3 1001 (1100-3)	2280-3 1181 (1200-3)

NW-1, 11 JUN 2026 to 09 JUL 2026

NW-1, 11 JUN 2026 to 09 JUL 2026