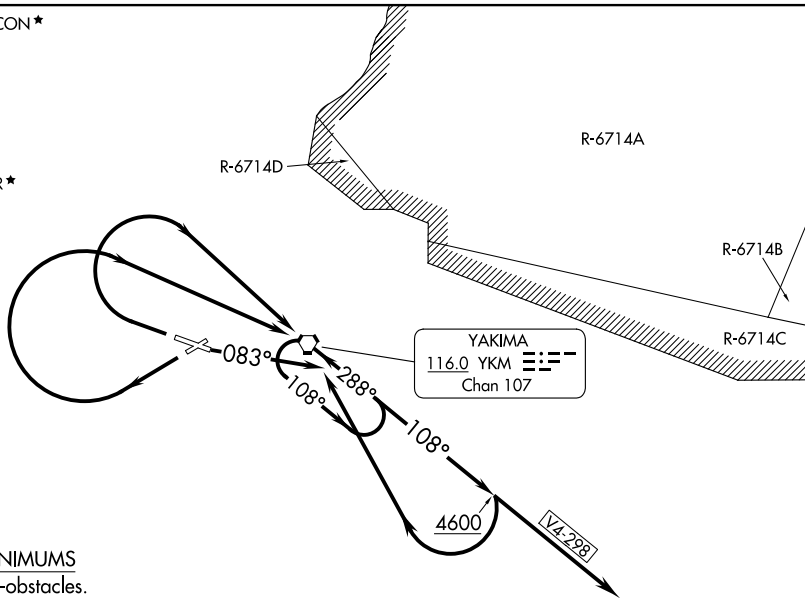


SPOKANE DEP CON *
123.8 263.15
ATIS
125.25
CLNC DEL
121.9
GND CON
121.9
YAKIMA TOWER *
133.25 257.8



TAKEOFF MINIMUMS

- Rwy 4: NA-obstacles.
- Rwy 9: Standard with minimum climb of 250' per NM to 2600.
- Rwy 22: Standard with minimum climb of 325' per NM to 3900.
- Rwy 27: Standard with minimum climb of 330' per NM to 2600.

TAKEOFF OBSTACLE NOTES

- Rwy 9: OL on bldg 27' from DER, 507' right of centerline, 34' AGL/1074' MSL.
Pole 388' from DER, 561' right of centerline, 34' AGL/1073' MSL.
Trees beginning 586' from DER, 550' right of centerline, up to 100' AGL/1139' MSL.
- Rwy 22: Fence beginning 27' from DER, 435' right of centerline, up to 10' AGL/1085' MSL.
Trees beginning 570' from DER, 228' left of centerline, up to 100' AGL/1199' MSL.
Trees beginning 3195' from DER, 202' right of centerline, up to 100' AGL/1199' MSL.
Trees beginning 1 NM from DER, 732' left of centerline, up to 100' AGL/1239' MSL.
- Rwy 27: Antenna on bldg 398' from DER, 282' left of centerline, 15' AGL/1117' MSL.
Trees beginning 3824' from DER, 1341' right of centerline, up to 100' AGL/1239' MSL.

NOTE: Chart not to scale.

DEPARTURE ROUTE DESCRIPTION

TAKEOFF RUNWAY 9: Climb heading 083° and outbound YKM R-108.

Thence. . . .

TAKEOFF RUNWAYS 22, 27: Climbing right turn direct YKM VORTAC and outbound YKM R-108. Thence. . . .

. . . . eastbound aircraft V4-298 continue on course, all other departures continue climb on YKM R-108 until 4600, then climbing right turn direct YKM VORTAC and hold to cross YKM VORTAC at or above MEA/MCA for route of flight.