

EL CENTRO, CALIFORNIA

# RNAV (GPS) RWY 8

WAAS CH <b>89932</b> W08A	APCH CRS <b>079°</b>	Rwy ldg TDZE Arprt Elev	<b>9503</b> <b>-46</b> <b>-42</b>
---------------------------------	-------------------------	-------------------------------	---

(USN)

EL CENTRO NAF (VRACIU FLD) (KNJK)

RNP APCH

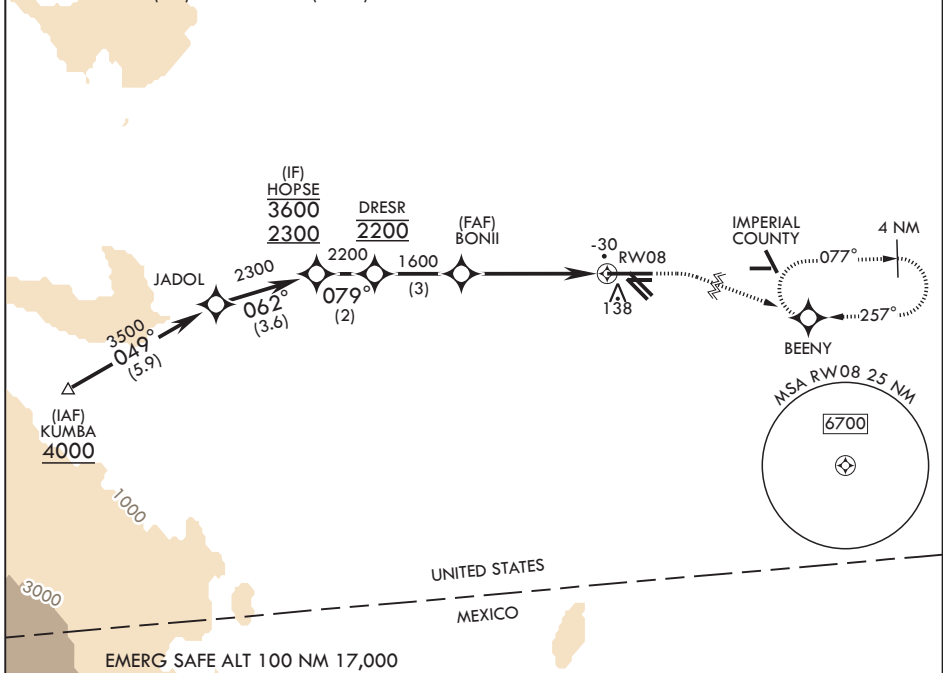
⚠ Circling visibility reduction by helicopters NA.  
When tower closed, increase visibility to 1 mile.

MISSED APPROACH: Climb to 800, then climbing right turn to 2400 direct BEENY and hold.

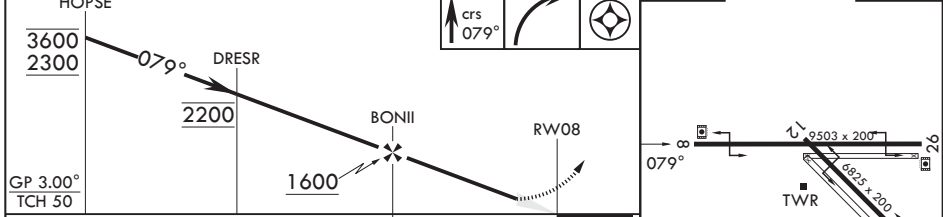
ATIS* <b>269.275</b>	APP CON/DEP CON <b>132.275 292.2</b>	TOWER* <b>119.1 360.2</b>	GND CON <b>121.9 254.35</b>
-------------------------	---	------------------------------	--------------------------------

Circling to Rwy 30 NA at night.

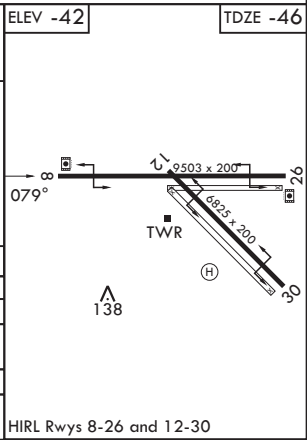
For uncompensated Baro-VNAV systems, LNAV/VNAV NA below -14°C (7°F) or above 54°C (129°F).



EMERG SAFE ALT 100 NM 17,000



CATEGORY	A		B		C		D	
LPV DA	204-3/4		250		(300-3/4)			
LNAV/VNAV DA	204-3/4 250 (300-3/4)	235-7/8 281 (300-7/8)	249-7/8 295 (300-7/8)	268-7/8 314 (400-7/8)				
LNAV MDA	460-1	506 (600-1)	460-1 3/8	506 (600-1 3/8)				
CIRCLING	480-1	522 (600-1)	480-1 1/2 522 (600-1 1/2)	520-2 562 (600-2)				



EL CENTRO, CALIFORNIA 32°50'N - 115°40'W EL CENTRO NAF (VRACIU FLD) (KNJK)

Orig 13JUL23

# RNAV (GPS) RWY 8

SW-3, 11 JUN 2026 to 09 JUL 2026

SW-3, 11 JUN 2026 to 09 JUL 2026