

# TACAN RWY 26

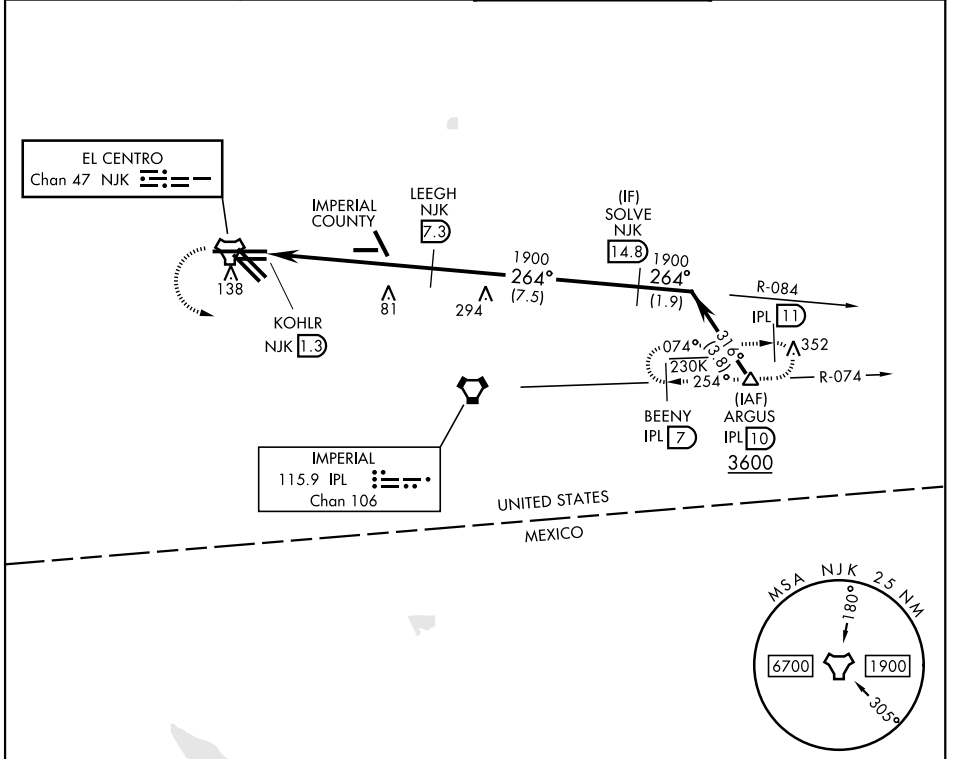
TACAN Chan <b>47</b>	NJK <b>264°</b>	APCH CRS <b>264°</b>	Rwy Idg TDZE Arprt Elev <b>9503</b> <b>-46</b> <b>-42</b>
-------------------------	--------------------	-------------------------	--

[USN]

EL CENTRO NAF (VRACIU FLD) (KNJK)

▼ Circling to Rwy 30 not authorized at night. MISSED APPROACH: Climb to 500, then climbing left turn to 2400 direct IPL VORTAC. Then direct BEENY via IPL R-074 and hold.

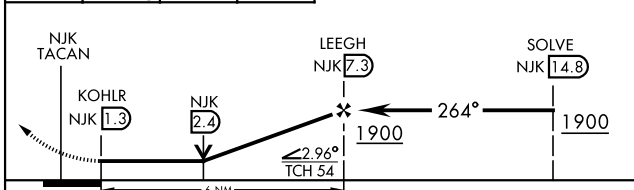
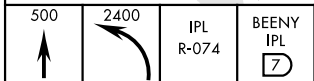
ATIS ★ <b>269.275</b>	APP CON <b>132.275 292.2</b>	TOWER ★ <b>119.1 360.2</b>	GND CON <b>121.9 254.35</b>
--------------------------	---------------------------------	-------------------------------	--------------------------------



SW-3, 11 JUN 2026 to 09 JUL 2026

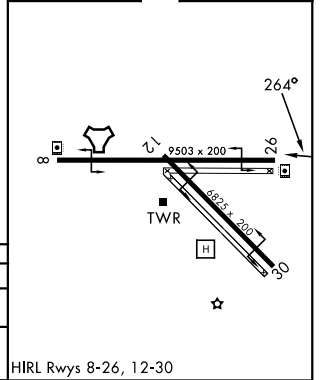
SW-3, 11 JUN 2026 to 09 JUL 2026

EMERG SAFE ALT 100 NM 17,000



CATEGORY	A	B	C	D
S-26	380-1 426 (500-1)	380-1¼ 426 (500-1¼)		
CIRCLING	480-1 522 (600-1)	480-1½ 522 (600-1½)	520-2 562 (600-2)	

ELEV -42	TDZE -46
----------	----------



HIRL Rwy 8-26, 12-30

EL CENTRO, CALIFORNIA 32°50'N-115°40'W EL CENTRO NAF (VRACIU FLD) (KNJK)

Orig 13JUL23

# TACAN RWY 26