

EL CENTRO, CALIFORNIA

VOR/DME RWY 30

VORTAC IPL 115.9 Chan 106	APCH CRS 284°	Rwy ldg TDZE Arpt Elev 6825 -42 -42
---	-------------------------	---

[USN]

EL CENTRO NAF (VRACIU FLD) (KNJK)

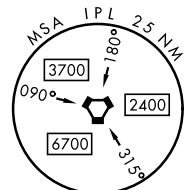
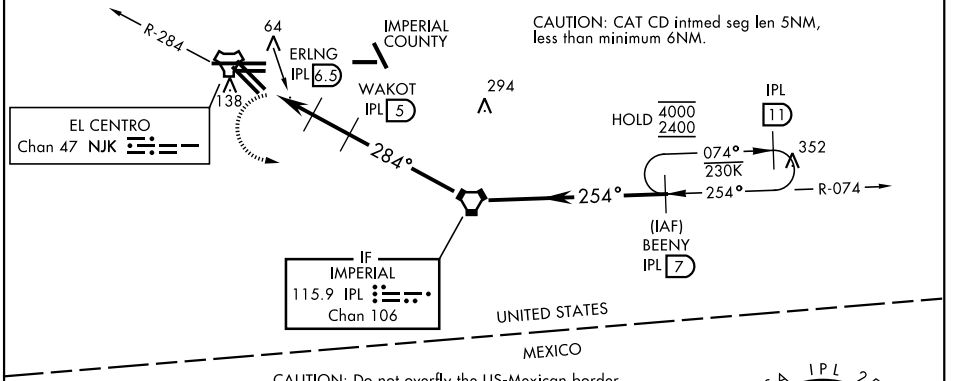
▼ Visibility reduction by helicopters not authorized. Procedure not authorized at night. MISSED APPROACH: Climb to 600, then climbing left turn to 2400, intercept IPL VORTAC R-074 to BEENY and hold.

ATIS ★ 269.275	APP CON 132.275 292.2	TOWER ★ 119.1 360.2	GND CON 121.9 254.35
--------------------------	---------------------------------	-------------------------------	--------------------------------

Rwy 30: 20:1 visual area penetrated by Fence, lit, 289 ft from thld, 213 ft right of course, 8 AGL/-34 MSL
Fence, 199 ft from thld, 305 ft right of course, 8 AGL/-34 MSL
Fence, 504 ft from thld, 3 ft right of course, 8 AGL/-34 MSL

CAUTION: Extensive civil aircraft operations at Imperial County airport.

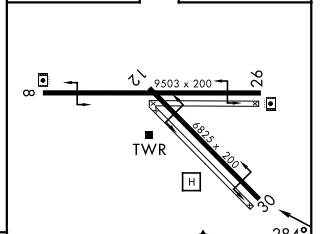
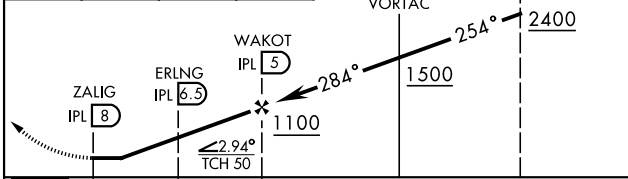
CAUTION: CAT CD intmed seg len 5NM, less than minimum 6NM.



EMERG SAFE ALT 100 NM 17,000 from NJK TACAN

600	2400	IPL R-074	BEENY IPL 7
-----	------	-----------	-------------

ELEV -42	TDZE -42
----------	----------



CATEGORY	A	B	C	D
S-30	380-1 422 (500-1)	380-1¼ 422 (500-1¼)		
CIRCLING	480-1 522 (600-1)	480-1½ 522 (600-1½)	520-2 562 (600-2)	

HIRL Rwys 8-26, 12-30

EL CENTRO, CALIFORNIA
Amdt 5 13JUL23

32°50'N-115°40'W

EL CENTRO NAF (VRACIU FLD) (KNJK)

VOR/DME RWY 30

SW-3, 11 JUN 2026 to 09 JUL 2026

SW-3, 11 JUN 2026 to 09 JUL 2026