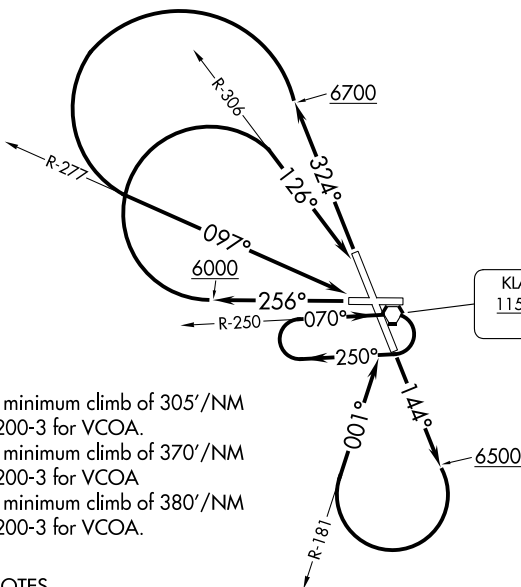


KINGSLEY DEP CON *	123.675	270.8
SEATTLE CENTER	127.6	346.35
ATIS	126.5	263.0
GND CON	121.9	348.6
KINGSLEY TOWER *	133.975	257.8



KLAMATH FALLS
115.9 LMT
Chan 106

TAKEOFF MINIMUMS

- Rwy 8: NA - Obstacles.
- Rwy 14: Standard with minimum climb of 305'/NM to 7100, or 3200-3 for VCOA.
- Rwy 26: Standard with minimum climb of 370'/NM to 7200, or 3200-3 for VCOA
- Rwy 32: Standard with minimum climb of 380'/NM to 6600, or 3200-3 for VCOA.

TAKEOFF OBSTACLE NOTES

- Rwy 14: Light pole 1' from DER, 84' right of centerline, 2' AGL/4097' MSL. Light pole 2' from DER, 84' left of centerline, 2' AGL/4097' MSL. Tree 3095' from DER, 1279' right of centerline, 4195' MSL. Tree 3107' from DER, 1240' left of centerline, 4183' MSL.
- Rwy 26: Pole 3' from DER, 283' left of centerline, 5' AGL/4094' MSL. Light pole 10' from DER, 89' right of centerline, 2' AGL/4093' MSL. Building 172' from DER, 499' right of centerline, 21' AGL/4113' MSL. Vehicle on road 254' from DER, 127' left of centerline, 4102' MSL. Railroad 550' from DER, 236' left of centerline, 4117' MSL. Tree, railroad beginning 593' from DER, 63' left of centerline, up to 4137' MSL. Railroad beginning 725' from DER, 23' right of centerline, up to 4117' MSL. Terrain 1.3 NM from DER, 2644' left of centerline, 4308' MSL. Ridgeline beginning 1.4 NM from DER, 2226' left of centerline, up to 4379' MSL.
- Rwy 32: Vehicle on road 139' from DER, 534' right of centerline, 4097' MSL. Trees beginning 2623' from DER, 741' left of centerline, up to 4191' MSL. Tree 4572' from DER, 220' left of centerline, 4206' MSL. Tree 4641' from DER, 199' left of centerline, 4208' MSL.

NOTE: Chart not to scale.

DEPARTURE ROUTE DESCRIPTION

TAKEOFF RUNWAY 14: Climb on heading 144° to 6500 then climbing right turn to intercept LMT VORTAC R-181 to LMT VORTAC, thence . . .

TAKEOFF RUNWAY 26: Climb on heading 256° to 6000 then climbing right turn to intercept LMT VORTAC R-306 to LMT VORTAC, thence . . .

TAKEOFF RUNWAY 32: Climb heading 324° to 6700 then climbing left turn to intercept LMT VORTAC R-277 to LMT VORTAC, thence . . .

. . . continue climb in LMT VORTAC holding pattern to cross LMT VORTAC at or above MEA for direction of flight before proceeding on course.

VCOA RUNWAYS 14, 26, 32: Obtain ATC approval for VCOA when requesting IFR clearance. Climb in visual conditions to cross LMT VORTAC at or above 7100, continue climb in LMT VORTAC holding pattern to cross LMT VORTAC at or above MEA for direction of flight before proceeding on course.

NW-1, 11 JUN 2026 to 09 JUL 2026

NW-1, 11 JUN 2026 to 09 JUL 2026