

# HI-TACAN RWY 14

VORTAC LMT <b>115.9</b> Chan <b>106</b>	APCH CRS <b>134°</b>	Rwy ldg <b>10,300</b> TDZE <b>4091</b> Arpt Elev <b>4095</b>
---	-------------------------	---

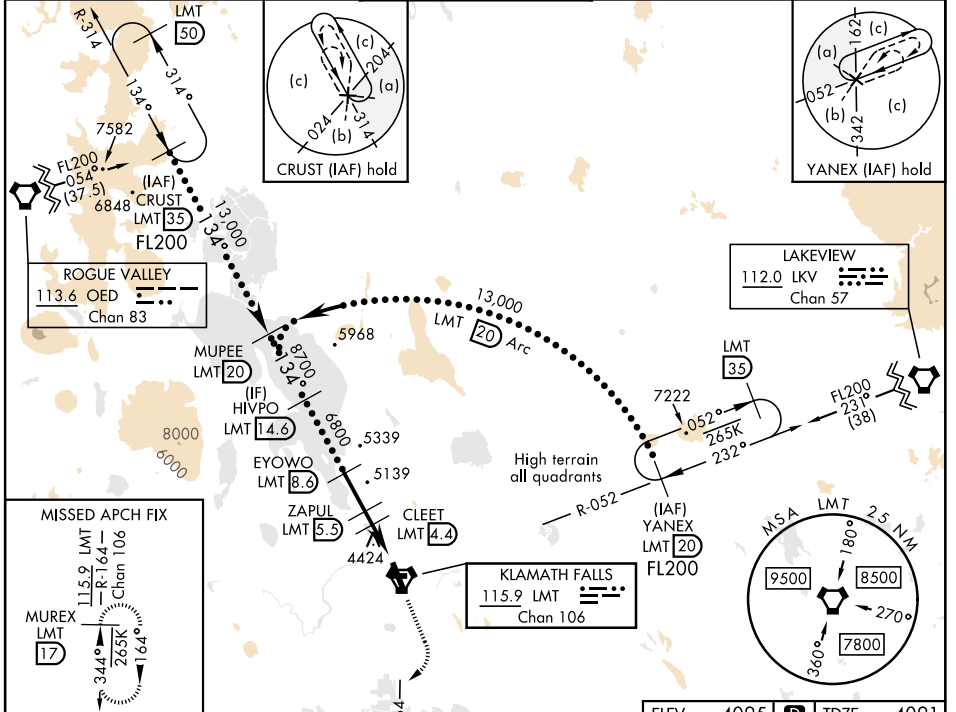
[USAF]

CRATER LAKE/KLAMATH RGNL (KLMT)

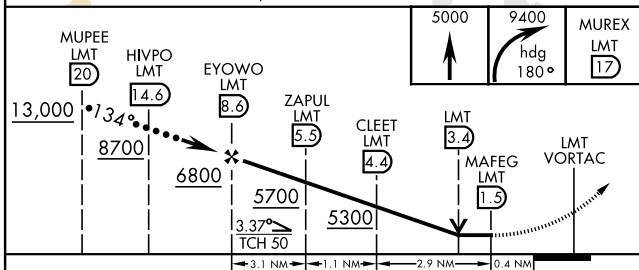
▼ \* When ALS inop increase vis to 2½ miles.  
 \*\* Circling not authorized for CAT DE NE of Rwy 14-32.

MALSF MISSED APPROACH: Climb to 5000 then climbing right turn to 9400 on heading 180° and LMT VORTAC R-164 to MUREX/LMT 17 DME and hold. Continue climb-in-hold to 9400.

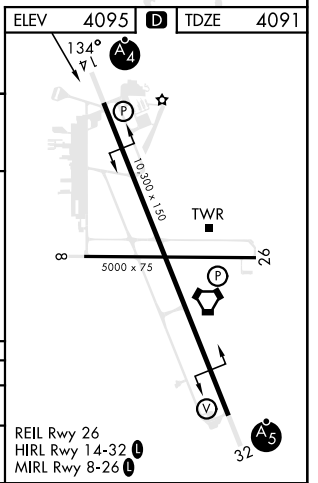
ATIS <b>126.5 263.0</b>	KINGSLEY APP CON <b>123.675 270.8</b>	KINGSLEY TOWER ★ <b>133.975 (CTAF) 257.8</b>	GND CON <b>121.9 348.6</b>	UNICOM <b>122.95</b>
----------------------------	--	---	-------------------------------	-------------------------



**NOT FOR CIVIL USE**  
 EMERG SAFE ALT 100 NM 16,400



CATEGORY	C	D	E
S-14 *	4860-2	769	(800-2)
CIRCLING **	5420-3 1325 (1400-3)	5660-3 1565 (1600-3)	5700-3 1605 (1700-3)



# HI-TACAN RWY 14

NW-1, 11 JUN 2026 to 09 JUL 2026

NW-1, 11 JUN 2026 to 09 JUL 2026