

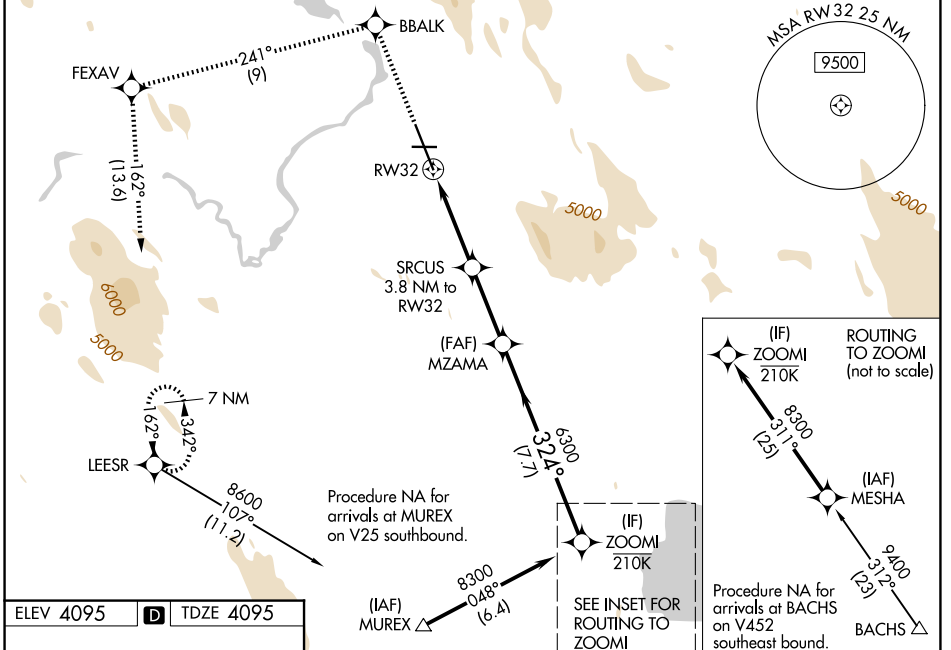
WAAS CH <b>70702</b> W32A	APP CRS <b>324°</b>	Rwy Ldg <b>10302</b> TDZE <b>4095</b> Apt Elev <b>4095</b>
---------------------------------	------------------------	--

# RNAV (GPS) RWY 32

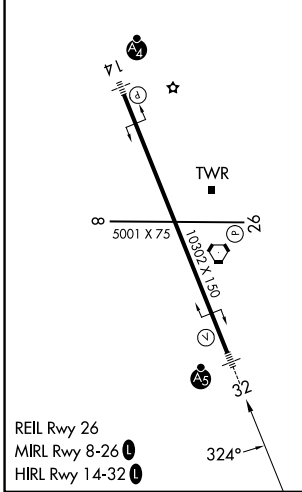
CRATER LAKE/KLAMATH RGNL (L.M.T)

RNP APCH - GPS.	MALSR AS	MISSED APPROACH: Climb to 8600 direct BBALK and on track 241° to FEXAV and on track 162° to LEESR and hold. *Missed approach requires minimum climb of 235 feet per NM to 6100.
<p>Baro-VNAV NA. Circling NA for Cat D northeast of Rwy 14-32. For inop ALS, increase LPV all Cats visibility to 1½ SM, LPV* (CG 235) all Cats visibility to RVR 4500, LNAV/VNAV all Cats visibility to 1¾ SM, and LNAV Cat C/D visibility to 2½ SM.</p>		

ATIS <b>126.5 263.0</b>	KINGSLEY APP CON* <b>123.675 270.8</b>	KINGSLEY TOWER* <b>133.975 (CTAF) 257.8</b>	GND CON <b>121.9 348.6</b>	UNICOM <b>122.95</b>
----------------------------	---	--	-------------------------------	-------------------------



ELEV 4095	D	TDZE 4095
-----------	---	-----------



8600	BBALK	tr 241°	FEXAV	tr 162°	LEESR	MZAMA	ZOOMI
			2.3 NM to RW32			6300	8300
			3.8 NM to RW32			5360	GP 3.00° TCH 55
			2.3 NM	1.5 NM	3 NM	7.7 NM	
CATEGORY	A	B	C	D			
LPV DA*	4387/24		292 (300-½)				
LPV DA	4644/60		549 (600-1¼)				
LNAV/VNAV DA	4705-1½		610 (700-1½)				
LNAV MDA	4900/24 805 (900-½)	4900/40 805 (900-¾)	4900-1⅞	805 (900-1½)			
CIRCLING	4900-1 805 (900-1)	4980-1¼ 885 (900-1¼)	5420-3 1325 (1400-3)	5680-3 1585 (1600-3)			

NW-1, 11 JUN 2026 to 09 JUL 2026

NW-1, 11 JUN 2026 to 09 JUL 2026