

VORTAC LMT 115.9 Chan 106	APP CRS 328°	Rwy Ldg 10302 TDZE 4095 Apt Elev 4095
-----------------------------------------------	------------------------	------------------------------------------------------------------

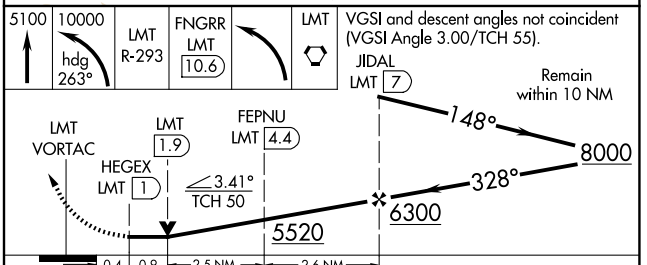
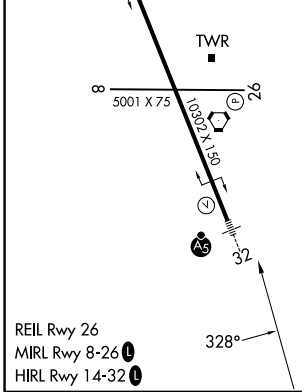
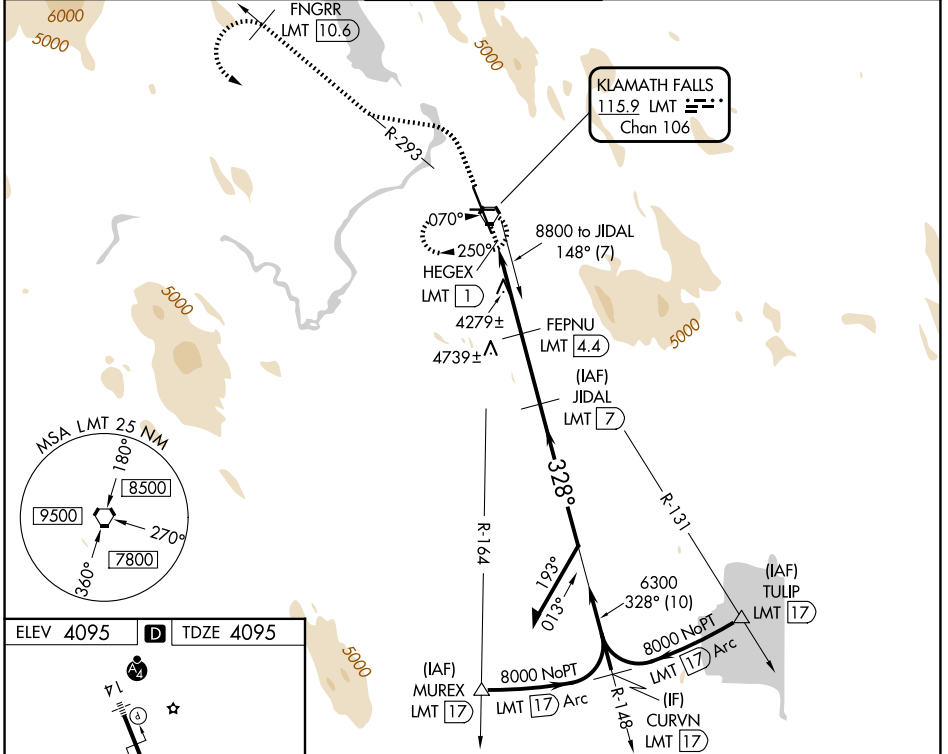
VOR/DME or TACAN RWY 32

CRATER LAKE/KLAMATH RGNL (LMT)

⚠ For inop MALS, increase S-32 Cat E visibility to 1¼ mile. Circling NA for Cat D and E east of Rwy 14-32. Procedure turn NA for Cat E aircraft.

MALS
MISSED APPROACH: Climb to 5100 then climbing left turn to 10000 via heading 263° and via LMT VORTAC R-293 to FNGRR/LMT 10.6 DME then left turn direct LMT VORTAC and hold. (TACAN aircraft climb to 5000 then climbing left turn to 9000 via heading 230° and LMT VORTAC R-265 to OLEBY/15 DME.)

ATIS 126.5 263.0	KINGSLEY APP CON * 123.675 270.8	KINGSLEY TOWER * 133.975 (CTAF) 257.8	GND CON 121.9 348.6	UNICOM 122.95
----------------------------	--------------------------------------------	-------------------------------------------------	-------------------------------	-------------------------



CATEGORY	A	B	C	D	E
S-32	4560/24	465 (500-½)	4560/40 465 (500-¾)	4560/50 465 (500-1)	4560/60 465 (500-1¼)
CIRCLING	4840-1 745 (800-1)	4980-1¼ 885 (900-1¼)	5420-3 1325 (1400-3)	5660-3 1565 (1600-3)	5700-3 1605 (1700-3)

NW-1, 11 JUN 2026 to 09 JUL 2026

NW-1, 11 JUN 2026 to 09 JUL 2026