

EDWARDS, CALIFORNIA

HI-ILS or LOC/DME Z RWY 23L

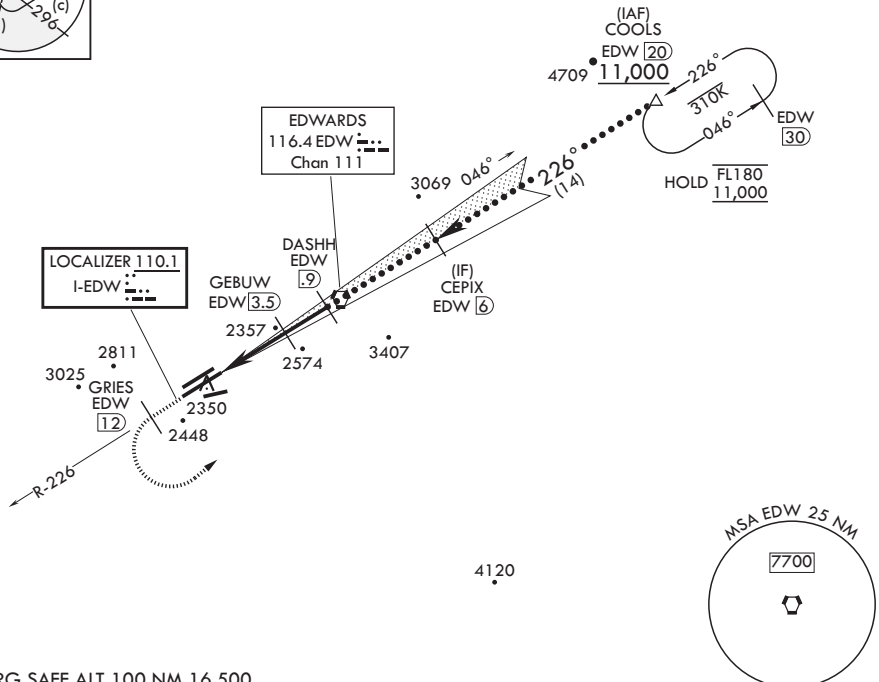
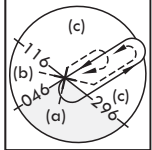
LOC I-EDW 110.1	APCH CRS 226°	Rwy ldg 15,017
		TDZE 2286
		Arprt Elev 2310

(USAF)

EDWARDS AFB (KEDW)

⚠ * Circling not authorized NW of Rwy 5L-23R. Circling not authorized at night to Rwy 5L-23R. MISSED APPROACH: Climb to 11,000. Track EDW VORTAC R-226 outbound to GRIES, then turn left direct COOLS and hold. Missed Approach requires use of RNAV or ATC RADAR monitoring.

ATIS * 127.425 269.9	JOSHUA APP CON/DEP CON 133.65 348.7	TOWER * 120.7 (CTAF) 318.1 (CTAF)	GND CON 121.8 225.4
--------------------------------	---	--	-------------------------------



SW-3, 11 JUN 2026 to 09 JUL 2026

SW-3, 11 JUN 2026 to 09 JUL 2026

EMERG SAFE ALT 100 NM 16,500

11,000 EDW R-226	GRIES EDW 12	COOLS EDW 20	COOLS EDW 20	ELEV 2310	TDZE 2286
------------------	--------------	--------------	--------------	-----------	-----------

CATEGORY	C	D	E
S-ILS 23L	2486-3/4	200	(200-3/4)
S-LOC 23L	2540-3/4	254	(300-3/4)
CIRCLING*	2880-1 1/2 569 (600-1 1/2)	2880-2	569 (600-2)

HIRL Rwy 5R-23L
REL Rwy 23L

EDWARDS, CALIFORNIA

34°54'N - 117°53'W

EDWARDS AFB (KEDW)

Amdt 1 30JAN20

HI-ILS or LOC/DME Z RWY 23L