

APCH CRS <b>046°</b>	Rwy Idg TDZE Arprt Elev	<b>15,017</b> <b>2302</b> <b>2310</b>
-------------------------	-------------------------------	---

(USAF)

EDWARDS AFB (KEDW)

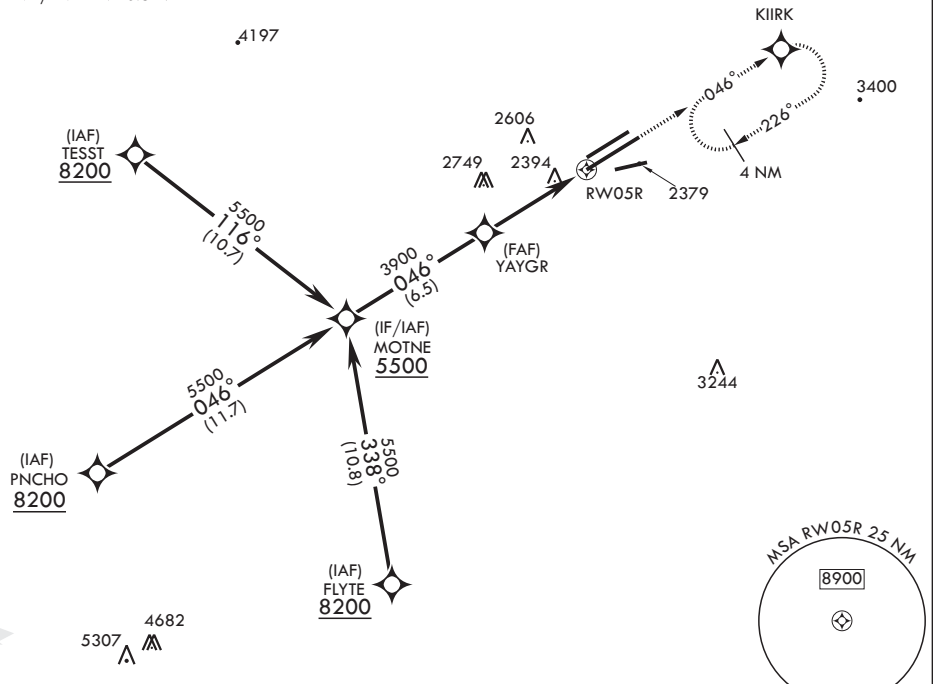
**▽** \* Circling not authorized NW of Rwy 5L-23R.

**MISSED APPROACH:** Climb to 5700 direct KIIRK and hold, continue climb-in-hold to 5700.

ATIS* <b>127.425 269.9</b>	JOSHUA APP CON/DEP CON <b>133.65 348.7</b>	TOWER* <b>120.7 (CTAF) 318.1 (CTAF)</b>	GND CON <b>121.8 225.4</b>
-------------------------------	---	--	-------------------------------

For uncompensated Baro VNAV systems, procedure NA below -19°C (-2°F) or above 54°C (130°F).

DME/DME RNP-0.3 NA



EMERG SAFE ALT 100 NM 16,500

MOTNE 5500	VGSI and descent angles not coincident.	5700 KIIRK	ELEV 2310	TDZE 2302	
GP 3.00° TCH 50	046°	YAYGR 3900	2680		
		1.5 NM to RWY05R			
		4.8 NM			
CATEGORY	A	B	C	D	E
LNAV/VNAV DA	2820-1 <sup>3</sup> / <sub>8</sub>		517	(600-1 <sup>3</sup> / <sub>8</sub> )	
LNAV MDA	2820-1	517 (600-1)	2820-1 <sup>3</sup> / <sub>8</sub>	517 (600-1 <sup>3</sup> / <sub>8</sub> )	
CIRCLING*	2880-1 569 (600-1)		2880-1 <sup>1</sup> / <sub>2</sub> 569 (600-1 <sup>1</sup> / <sub>2</sub> )	2880-2 569 (600-2)	

SW-3, 11 JUN 2026 to 09 JUL 2026

SW-3, 11 JUN 2026 to 09 JUL 2026