

EDWARDS, CALIFORNIA

# VOR/DME or TACAN Y RWY 23L

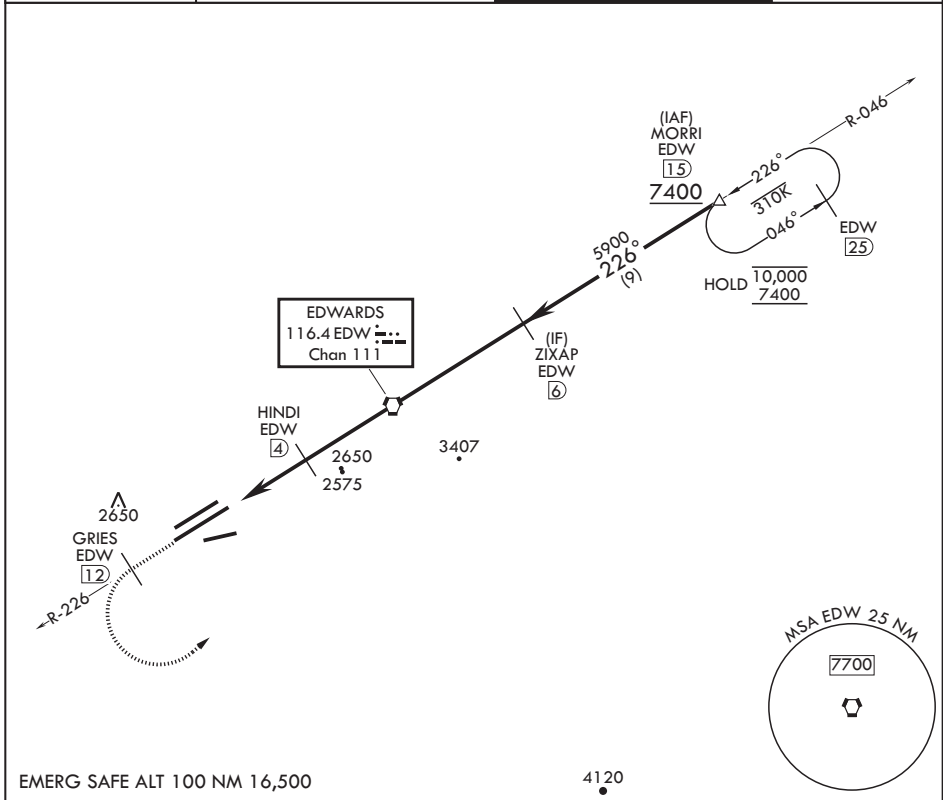
VORTAC EDW <b>116.4</b> Chan 111	APCH CRS <b>226°</b>	Rwy ldg TDZE <b>15,017</b> <b>2286</b>	Arprt Elev <b>2310</b>
--	-------------------------	--	---------------------------

(USAF)

EDWARDS AFB (KEDW)

**⚠** \* Circling not authorized NW of Rwy 5L-23R. Circling not authorized at night to Rwy 5L-23R. **MISSED APPROACH:** Climb to 7400. Track EDW VORTAC R-226 outbound to GRIES, then turn left direct MORRI and hold. Missed Approach requires use of RNAV or ATC RADAR monitoring.

ATIS ★ <b>127.425 269.9</b>	JOSHUA APP CON/DEP CON <b>133.65 348.7</b>	TOWER ★ <b>120.7</b> (CTAF) <b>318.1</b> (CTAF)	GND CON <b>121.8 225.4</b>
--------------------------------	---	--	-------------------------------



7400 EDW R-226	GRIES EDW ⑫	MORRI EDW ⑮	MORRI EDW ⑮	ELEV 2310	TDZE 2286
VGSI and descent angles not coincident (VGSI Angle 3.00/TCH 49).					
HUBNO ⑦	HINDI EDW ④	VORTAC EDW	ZIXAP EDW ⑥	MORRI EDW ⑮	
	3300	4500	5900	7400	
CATEGORY	A	B	C	D	E
S-23L	2640-1		354	(400-1)	
CIRCLING*	2880-1	569 (600-1)	2880-1½ 569 (600-1½)	2880-2	569 (600-2)
2516 HIRL Rwy 5R-23L REIL Rwy 23L					

EDWARDS, CALIFORNIA

34°54'N - 117°53'W

EDWARDS AFB (KEDW)

Amdt 2 23APR20

# VOR/DME or TACAN Y RWY 23L

SW-3, 11 JUN 2026 to 09 JUL 2026

SW-3, 11 JUN 2026 to 09 JUL 2026