

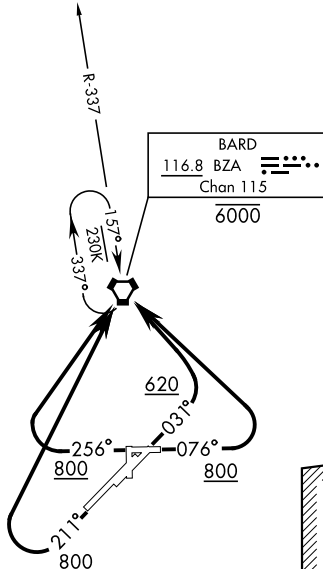
# BARD ONE DEPARTURE (OBSTACLE) (BZA1.BZA)

YUMA, ARIZONA

ATIS 118.8 273.5  
DEP CON  
125.55 282.325  
SAN DIEGO RADIO  
122.6

[USN]

Rwys 3L/R, 8: Do not exceed 240 KIAS until established direct BZA VORTAC.  
Rwys 21L/R, 26: Do not exceed 250 KIAS until established direct BZA VORTAC.



SW-4, 11 JUN 2026 to 09 JUL 2026

SW-4, 11 JUN 2026 to 09 JUL 2026

## DEPARTURE ROUTE DESCRIPTION

**TAKEOFF RWY 3L/R:** Climb on heading 031° to 620, then climbing left turn direct BZA VORTAC, continue climb in BZA holding pattern to cross BZA at or above MEA for route of flight.

**TAKEOFF RWY 8:** Climb on heading 076° to 800, then climbing left turn direct BZA VORTAC, continue climb in BZA holding pattern to cross BZA at or above MEA for route of flight.

**TAKEOFF RWY 21L/R:** Climb on heading 211° to 800, then climbing right turn direct BZA VORTAC, continue climb in BZA holding pattern to cross BZA at or above MEA for route of flight.

**TAKEOFF RWY 26:** Climb on heading 256° to 800, then climbing right turn direct BZA VORTAC, continue climb in BZA holding pattern to cross BZA at or above MEA for route of flight.

# BARD ONE DEPARTURE (OBSTACLE) (BZA1.BZA)

YUMA, ARIZONA

Amdt 1 19MAR26

YUMA MCAS/YUMA INTL (KNYL)