

YUMA, ARIZONA

# HI-TACAN Z RWY 21R

TACAN NYL Chan <b>84</b>	APCH CRS <b>208°</b>	Rwy Idg <b>13,300</b> TDZE <b>193</b> Arprt Elev <b>213</b>
-----------------------------	-------------------------	---

[USN]

YUMA MCAS/YUMA INTL (KNYL)

\* When ALS inop, increase vis to 1 1/4 miles.

MALS R (A5)

MISSED APPROACH: Climb to 1000 then climbing right turn to 4600 on hdg 012° and NYL TACAN R-342 to JIMUK and hold, continue climb-in-hold to 4600.

ATIS <b>118.8 273.5</b>	APP CON <b>124.7 371.975</b>	TOWER <b>119.3 (CTAF) 0 377.075</b>	GND CON <b>121.9 314.0</b>	ASR/PAR
----------------------------	---------------------------------	--	-------------------------------	---------

Request holding from Los Angeles ARTCC prior to frequency change to MCAS Yuma Approach Control.

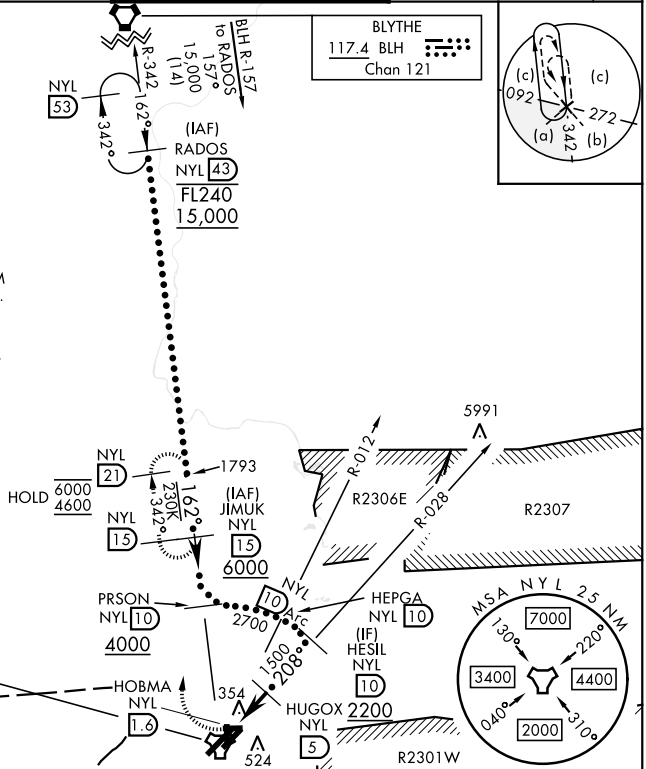
CAUTION:  
Short intermediate, recommend early configuration.

CAUTION:  
R-2507 and R-2512 located approximately 33 NM/28 NM NW respectively of NYL TACAN.

CAUTION: Intermediate segment 5.0 NM less than minimum 6.0 NM for CAT CDE.

Holding at IAF PRSON not authorized with aircraft holding at CAZZI or JIMUK.

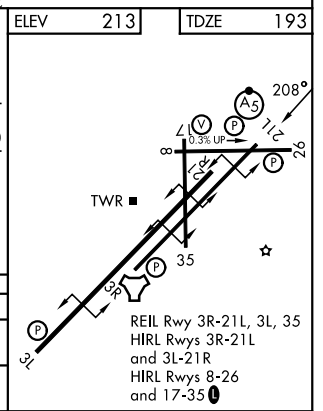
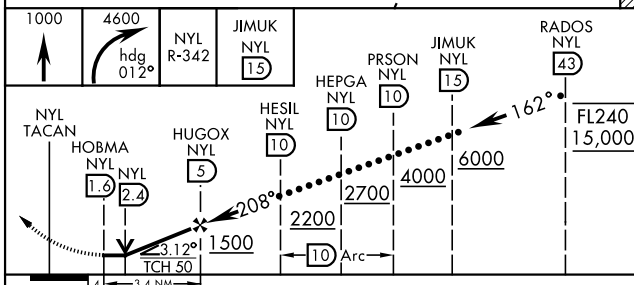
Holding at JIMUK not authorized with aircraft holding at CAZZI or PRSON.



YUMA  
Chan 84 NYL

UNITED STATES  
MEXICO

EMERG SAFE ALT 100 NM 18,000



CATEGORY	C	D	E
S-21R*	620-3/4	427	(500-3/4)
CIRCLING	860-1 3/4 647 (700-1 3/4)	860-2 647 (700-2)	860-2 1/4 647 (700-2 1/4)

YUMA, ARIZONA  
Amdt 7 22JAN26

32°39'N-114°36'W

YUMA MCAS/YUMA INTL (KNYL)

# HI-TACAN Z RWY 21R

SW-4, 11 JUN 2026 to 09 JUL 2026

SW-4, 11 JUN 2026 to 09 JUL 2026