

HI-TACAN Z RWY 3L

TACAN NYL Chan 84	APCH CRS 039°	Rwy Idg 13,300 TDZE 195 Arpt Elev 213
-----------------------------	-------------------------	--

[USN]

YUMA MCAS/YUMA INTL (KNYL)

MISSED APPROACH: Climb to 1500, then climbing left turn to 4600, intercept NYL TACAN R-342 to JIMUK and hold, continue climb-in-hold to 4600.

ATIS 118.8 273.5	APP CON 124.7 371.975	TOWER 119.3 (CTAF) 0 377.075	GND CON 121.9 314.0	ASR/PAR
----------------------------	---------------------------------	--	-------------------------------	---------

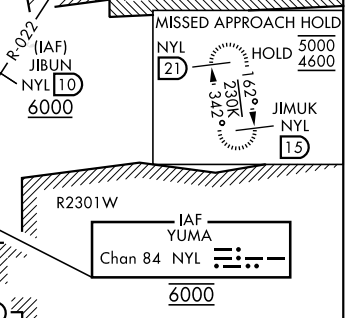
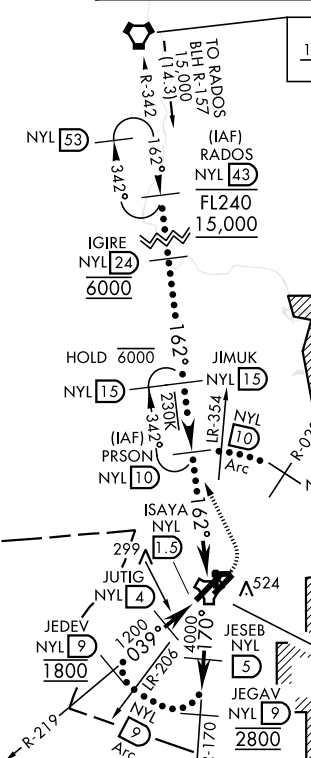
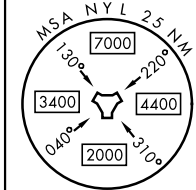
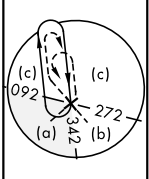
Request holding from Los Angeles ARTCC prior to frequency change to MCAS Yuma Approach Control.

CAUTION:
R-2507 and R-2512 located approximately 33 NM/28 NM NW respectively of NYL TACAN.

CAUTION: Intermediate segment 5.0 NM less than minimum 6.0 NM for CAT CDE.

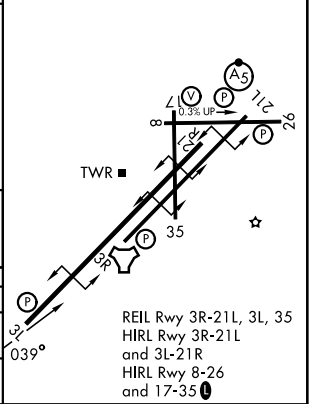
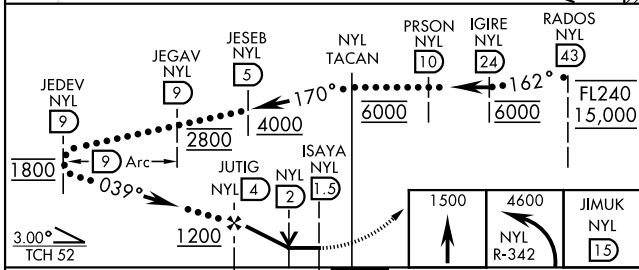
Holding at IAF PRSON not authorized with aircraft holding at CAZZI or JIMUK.

BLYTHE
117.4 BLH
Chan 121



EMERG SAFE ALT 100 NM 18,000

ELEV	213	TDZE	195
------	-----	------	-----



CATEGORY	C	D	E
S-3L	560-1	365	(400-1)
CIRCLING	860-1¼ 647 (700-1¼)	860-2 647 (700-2)	860-2¼ 647 (700-2¼)

HI-TACAN Z RWY 3L

SW-4, 11 JUN 2026 to 09 JUL 2026

SW-4, 11 JUN 2026 to 09 JUL 2026