

ILS or LOC RWY 21R

LOC I-YUM 108.3	APCH CRS 211°	Rwy Ldg 21L 9239 21R 13,300	TDZE 21L 208 21R 193	Arpt Elev 213
---------------------------	-------------------------	---	--	-------------------------

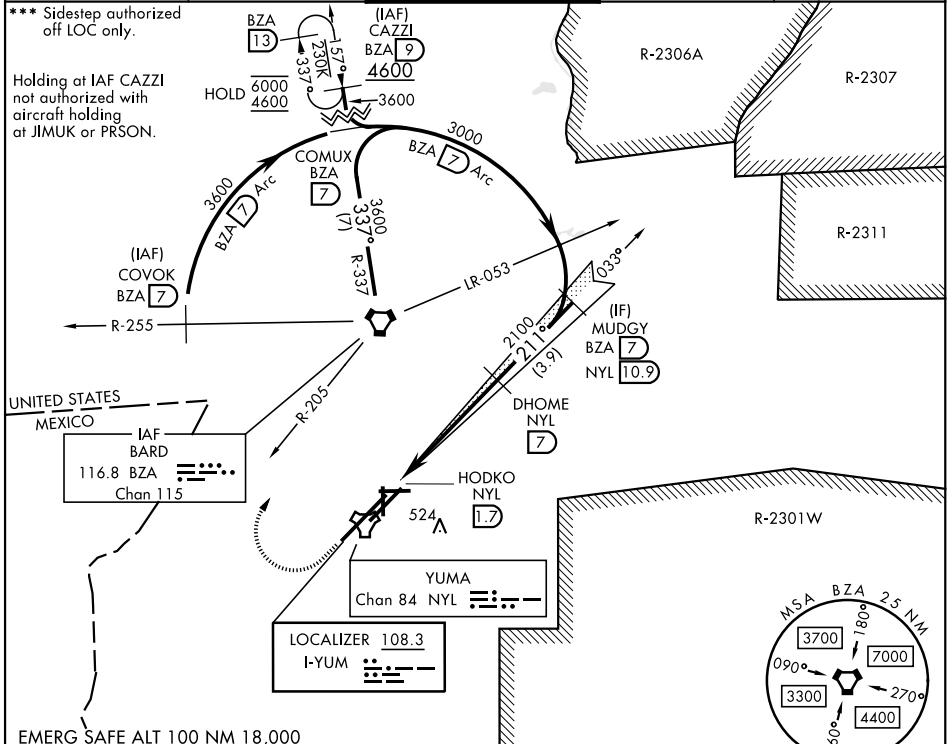
[USN] YUMA MCAS/YUMA INTL (KNYL)

VOR, DME required

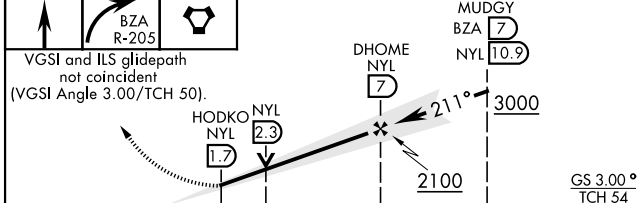
* When ALS inop, increase vis to ¾ mile.
 ** When ALS inop, increase CAT AB vis to 1 mile, CAT CD vis to 1½ miles.

MALSR MISSED APPROACH: Climb to 900, then climbing right turn to 4600 heading 355° and intercept BZA VORTAC R-205 direct BZA. Then outbound via BZA R-337 to CAZZI and hold, continue climb-in-hold to 4600.

ATIS 118.8 273.5	APP CON 124.7 371.975	TOWER 119.3 (CTAF) 0 377.075	GND CON 121.9 314.0	ASR/PAR
----------------------------	---------------------------------	--	-------------------------------	---------

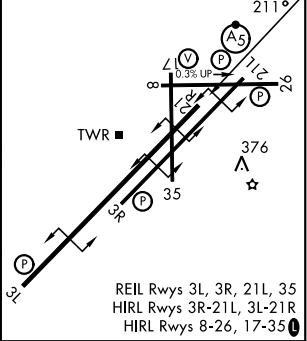


EMERG SAFE ALT 100 NM 18,000



ELEV 213	D	TDZE 21L 208
		TDZE 21R 193

CATEGORY	A	B	C	D
S-ILS 21R *	393-½		200	(200-½)
S-LOC 21R **	600-½	407 (400-½)	600-¾	407 (400-¾)
SIDESTEP 21L ***	600-½	392 (400-½)	600-2	392 (400-2½)
CIRCLING	680-1	467 (500-1)	860-1¾	860-2
			647 (700-1¾)	647 (700-2)



ILS or LOC RWY 21R

SW-4, 11 JUN 2026 to 09 JUL 2026

SW-4, 11 JUN 2026 to 09 JUL 2026