

YUMA, ARIZONA

RNAV (GPS) RWY 21R

APCH CRS	Rwy Idg	13,300
211°	TDZE	193
	Arprt Elev	213

(USN)

YUMA MCAS YUMA INTL (KNYL)

RNP APCH - GPS

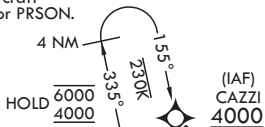


MISSED APPROACH: Climb to 800 then, climbing right turn to 4000 direct CAZZI and hold. Continue climb in hold to 4000.

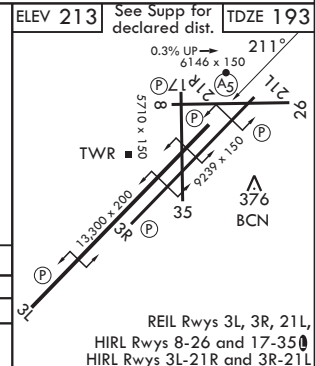
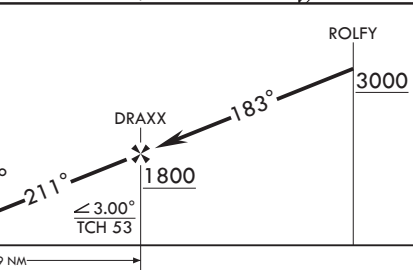
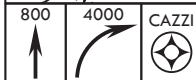
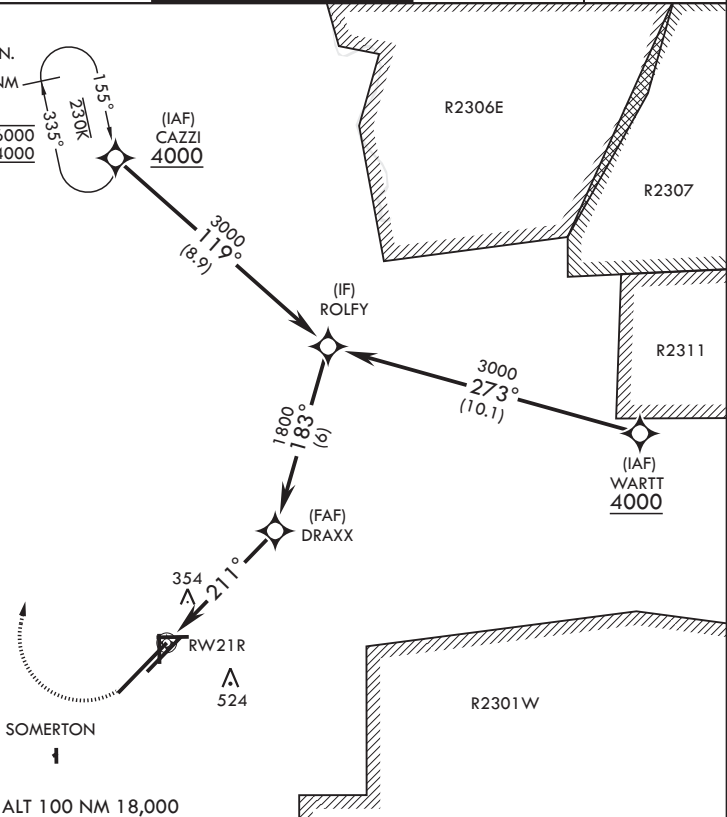
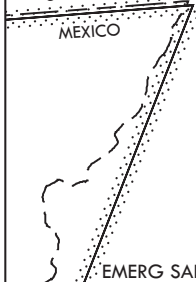
▼ * When ALS inop, increase CAT AB vis to 1 mile, CAT CD vis to 1 1/4 miles.

ATIS 118.8 273.5	APP CON 124.7 371.975	TOWER 119.3 (CTAF) 0 377.075	GND CON 121.9 314.0	ASR/PAR
---------------------	--------------------------	---------------------------------	------------------------	---------

Holding at IAF CAZZI not authorized with aircraft holding at JIMUK or PRSON.



CONTIGUOUS US ADIZ UNITED STATES



CATEGORY	A	B	C	D
LNAV MDA*	620-1/2	427 (500-1/2)	620-3/4 427 (500-3/4)	
CIRCLING	680-1	467 (500-1)	860-1 3/4 647 (700-1 3/4)	860-2 647 (700-2)

REIL Rwy 3L, 3R, 21L, HIRL Rwy 8-26 and 17-35, HIRL Rwy 3L-21R and 3R-21L

YUMA, ARIZONA

32°39'N - 114°36'W

YUMA MCAS YUMA INTL (KNYL)

Amdt 6 22JAN26

RNAV (GPS) RWY 21R

SW-4, 11 JUN 2026 to 09 JUL 2026

SW-4, 11 JUN 2026 to 09 JUL 2026