

YUMA, ARIZONA

# RNAV (GPS) RWY 3L

APCH CRS	Rwy Idg	13,300
031°	TDZE	195
	Arpt Elev	213

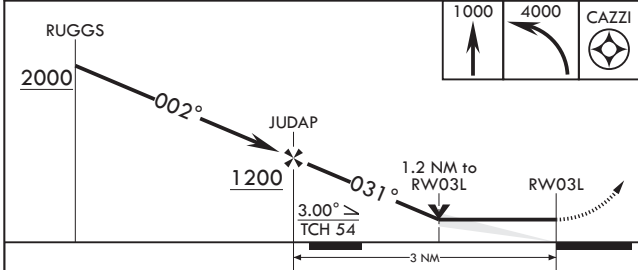
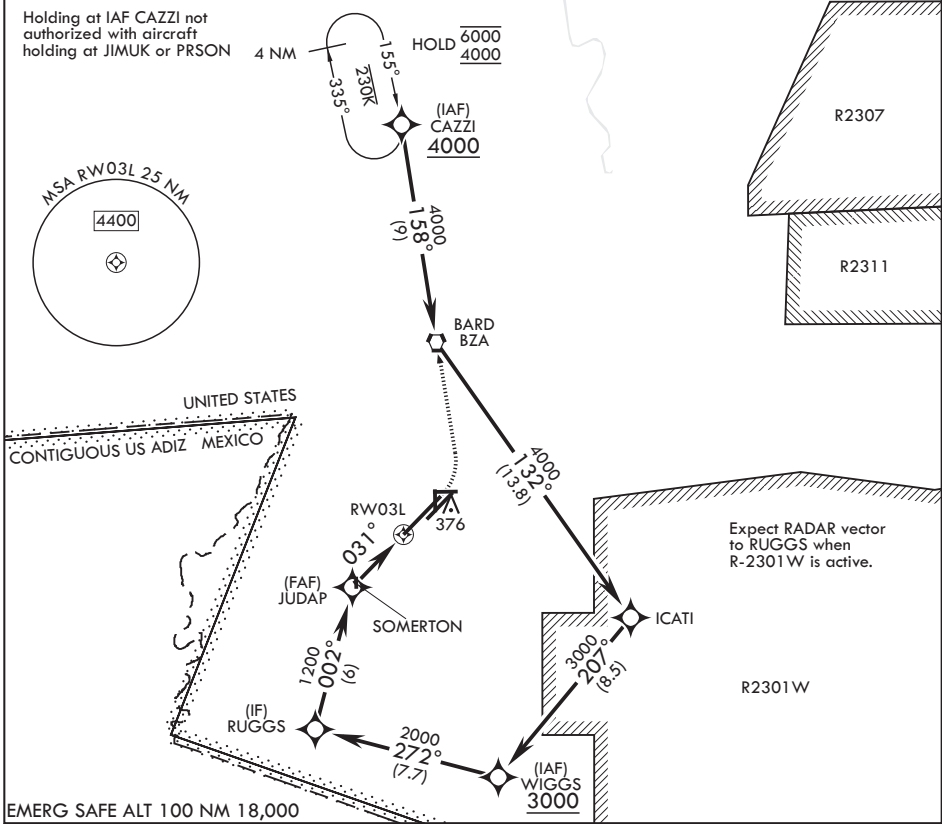
(USN)

YUMA MCAS YUMA INTL (KNYL)

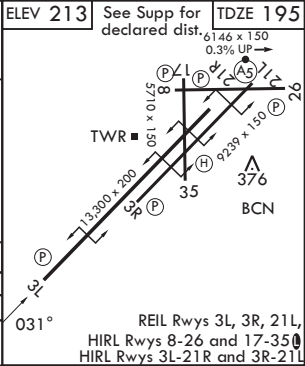
RNP APCH - GPS

MISSED APPROACH: Climb to 1000, then climbing left turn to 4000 direct CAZZI and hold. Continue climb in hold to 4000.

ATIS 118.8 273.5	APP CON 124.7 371.975	TOWER 119.3 (CTAF) 0 377.075	GND CON 121.9 314.0	ASR/PAR
---------------------	--------------------------	---------------------------------	------------------------	---------



CATEGORY	A	B	C	D
LNAV MDA	640-1	445 (500-1)	640-1 $\frac{3}{4}$ 445 (500-1 $\frac{1}{4}$ )	860-2
CIRCLING	680-1	467 (500-1)	860-1 $\frac{3}{4}$ 647 (700-1 $\frac{1}{4}$ )	860-2 647 (700-2)



YUMA, ARIZONA

32°39'N - 114°36'W

YUMA MCAS YUMA INTL (KNYL)

Amdt 5 22JAN26

# RNAV (GPS) RWY 3L

SW-4, 11 JUN 2026 to 09 JUL 2026

SW-4, 11 JUN 2026 to 09 JUL 2026