

TACAN Y RWY 21R

YUMA MCAS/YUMA INTL (KNYL)

TACAN NYL Chan 84	APCH CRS 208°	Rwy Ldg 13,300 TDZE 193 Arprt Elev 213
-----------------------------	-------------------------	---

[UNSN]

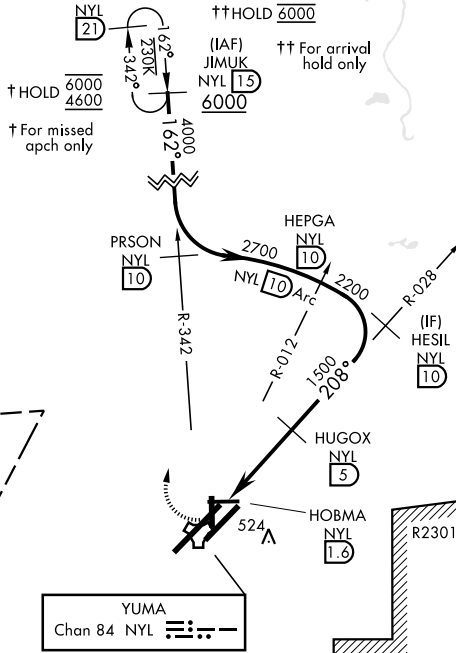
▼ * When ALS inop, increase CAT AB vis to 1 mile, CAT CD vis to 1/4 miles.



MISSED APPROACH: Climb to 1000, then climbing right turn to 4600 on hdg 012° and NYL TACAN R-342 to JIMUK and hold, continue climb-in-hold to 4600.

ATIS 118.8 273.5	APP CON 124.7 371.975	TOWER 119.3 (CTAF) 0 377.075	GND CON 121.9 314.0	ASR/PAR
----------------------------	---------------------------------	--	-------------------------------	---------

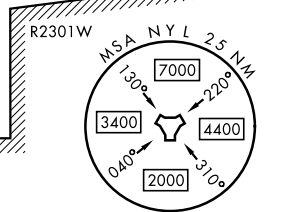
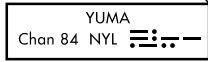
CAUTION:
R-2306E located
14.9 NM NE of NYL TACAN.
CAUTION: Intermediate
segment 5 NM less than
minimum 6 NM for CAT CDE.



SW-4, 11 JUN 2026 to 09 JUL 2026

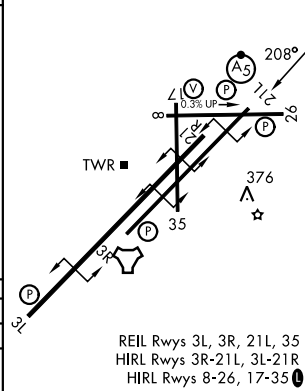
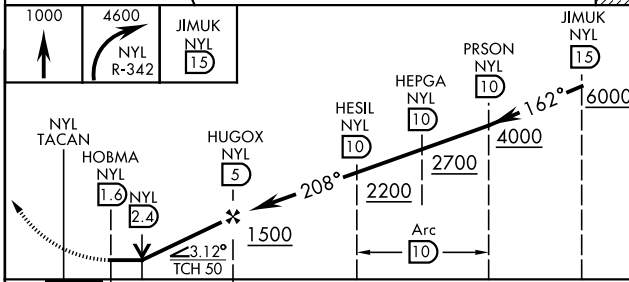
SW-4, 11 JUN 2026 to 09 JUL 2026

UNITED STATES
MEXICO



EMERG SAFE ALT 100 NM 18,000

ELEV	213	TDZE	193
------	-----	------	-----



CATEGORY	A	B	C	D
S-21R*	620-1/2	427 (500-1/2)	620-3/4	427 (500-3/4)
CIRCLING	680-1 467 (500-1)	680-1 467 (500-1)	860-1 1/4 647 (700-1 1/4)	860-2 647 (700-2)

REIL Rwy's 3L, 3R, 21L, 35
HIRL Rwy's 3R-21L, 3L-21R
HIRL Rwy's 8-26, 17-35

TACAN Y RWY 21R