

YUMA ONE DEPARTURE (NYL1.NYL)

YUMA, ARIZONA

DEP CON
125.55 282.325
SAN DIEGO RADIO
122.6

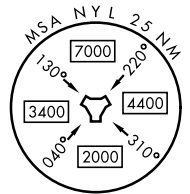
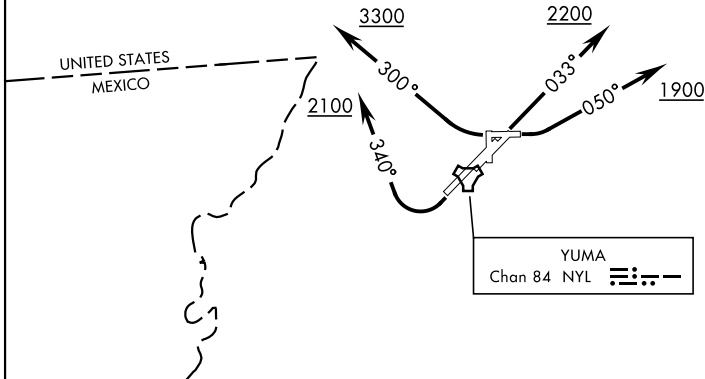
RADAR required [USN]

Rwy	Knots	60	120	180	240	300	360
3L/3R (C)	V/V(fpm)	325	650	975	1300	1625	1950
8 (B)	V/V(fpm)	300	600	900	1200	1500	1800
26 (C)	V/V(fpm)	300	600	900	1200	1500	1800

Minimum Climb Rate

- (C) to 1700
- (B) to 1900
- (C) to 3300

**TOP ALTITUDE:
ASSIGNED BY ATC**



DEPARTURE ROUTE DESCRIPTION

TAKEOFF RWY 3L/3R: Climb on heading 033° to 2200 thence...

TAKEOFF RWY 8: Climbing left turn heading 050° to 1900 thence...

TAKEOFF RWY 21L/21R: Climbing right turn heading 340° to 2100 thence...

TAKEOFF RWY 26: Climbing right turn heading 300° to 3300 thence...

...expect RADAR vectors to first enroute navaid/fix. Expect clearance to requested altitude/flight level ten minutes after departure.

YUMA ONE DEPARTURE (NYL1.NYL)

Amdt 2 14MAY26

YUMA, ARIZONA

YUMA MCAS/YUMA INTL (KNYL)

SW-4, 11 JUN 2026 to 09 JUL 2026

SW-4, 11 JUN 2026 to 09 JUL 2026