

# RNAV (RNP) Z RWY 12

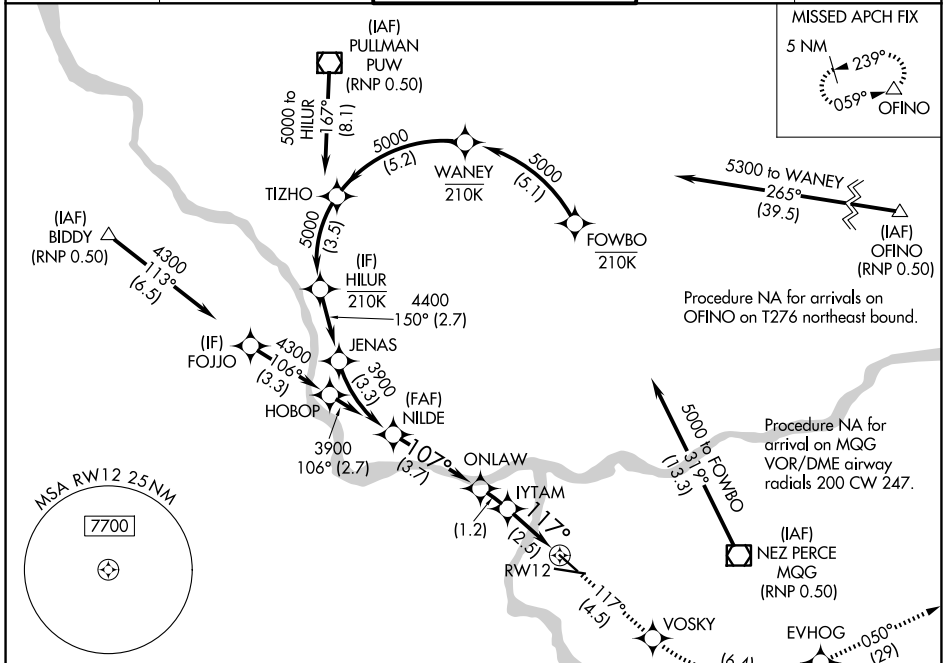
LEWISTON/NEZ PERCE COUNTY (LWS)

APP CRS <b>117°</b>	Rwy Ldg <b>4750</b>
	TDZE <b>1417</b>
	Apt Elev <b>1442</b>

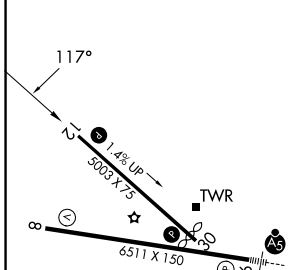
RNP AR APCH-GPS.  
 ▼ For uncompensated Baro-VNAV systems, procedure NA below -12°C or above 54°C.

MISSED APPROACH: Climb to 6000 on track 117° to VOSKY then left turn 6000 to EVHOG and on track 050° to OFINO and hold.  
 \*Missed approach requires minium climb of 260 feet per NM to 3400.

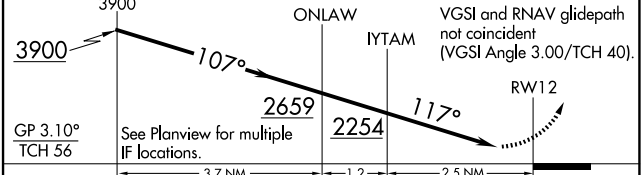
ASOS <b>135.575</b>	SEATTLE CENTER <b>123.95 290.55</b>	LEWISTON TOWER ★ <b>119.4 (CTAF) 0 318.8</b>	GND CON <b>121.9</b>	UNICOM <b>122.95</b>
------------------------	--	---	-------------------------	-------------------------



ELEV <b>1442</b>	<b>D</b>	TDZE <b>1417</b>
------------------	----------	------------------



6000	VOSKY	6000	EVHOG	tr 050°	OFINO
------	-------	------	-------	---------	-------



CATEGORY	A	B	C	D
RNP 0.30 DA*	1685-7 <sup>8</sup> / <sub>8</sub>		268 (300-7 <sup>8</sup> / <sub>8</sub> )	
RNP 0.30 DA	1889-1 <sup>3</sup> / <sub>8</sub>		472 (500-1 <sup>3</sup> / <sub>8</sub> )	

## AUTHORIZATION REQUIRED

NW-1, 11 JUN 2026 to 09 JUL 2026

NW-1, 11 JUN 2026 to 09 JUL 2026