

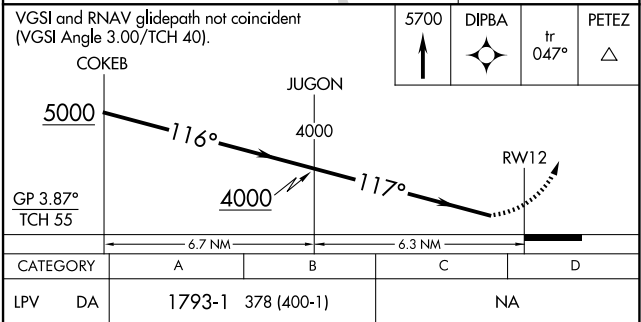
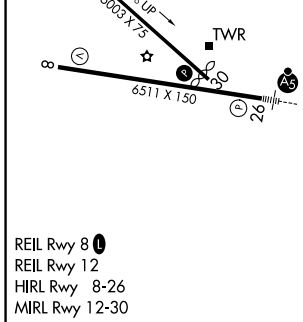
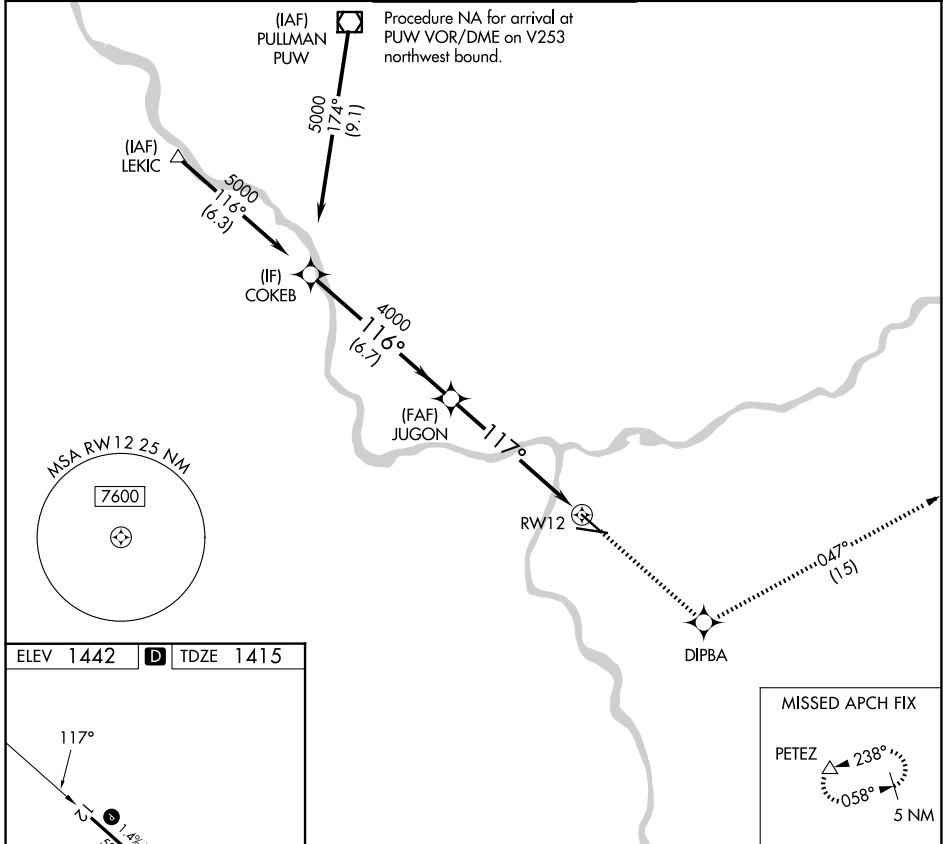
WAAS CH <b>56500</b> <b>W12A</b>	APP CRS <b>117°</b>	Rwy Ldg <b>4750</b> TDZE <b>1415</b> Apt Elev <b>1442</b>
--	------------------------	---

# RNAV (GPS) Y RWY 12

LEWISTON/NEZ PERCE COUNTY (LWS)

<p><b>▼</b> When local altimeter setting not received, procedure NA.  <b>▲</b> NA DME/DME RNP-0.3 NA. Helicopter visibility reduction below ¾ SM NA.</p>	<p>MISSED APPROACH: Climb to 5700 direct DIPBA and on track 047° to PETEZ and hold, continue climb-in-hold to 5700.</p>
--	---

ASOS <b>135.575</b>	SEATTLE CENTER <b>123.95 290.55</b>	LEWISTON TOWER ★ <b>119.4 (CTAF) 0 318.8</b>	GND CON <b>121.9</b>	UNICOM <b>122.95</b>
------------------------	--	---	-------------------------	-------------------------



NW-1, 11 JUN 2026 to 09 JUL 2026

NW-1, 11 JUN 2026 to 09 JUL 2026