

(HOCUT5.HOCUT) 23334  
**HOCUT FIVE DEPARTURE**

CALIFORNIA REDWOOD COAST-HUMBOLDT COUNTY (ACV)  
 AL-519 (FAA)  
 ARCATA/EUREKA, CALIFORNIA

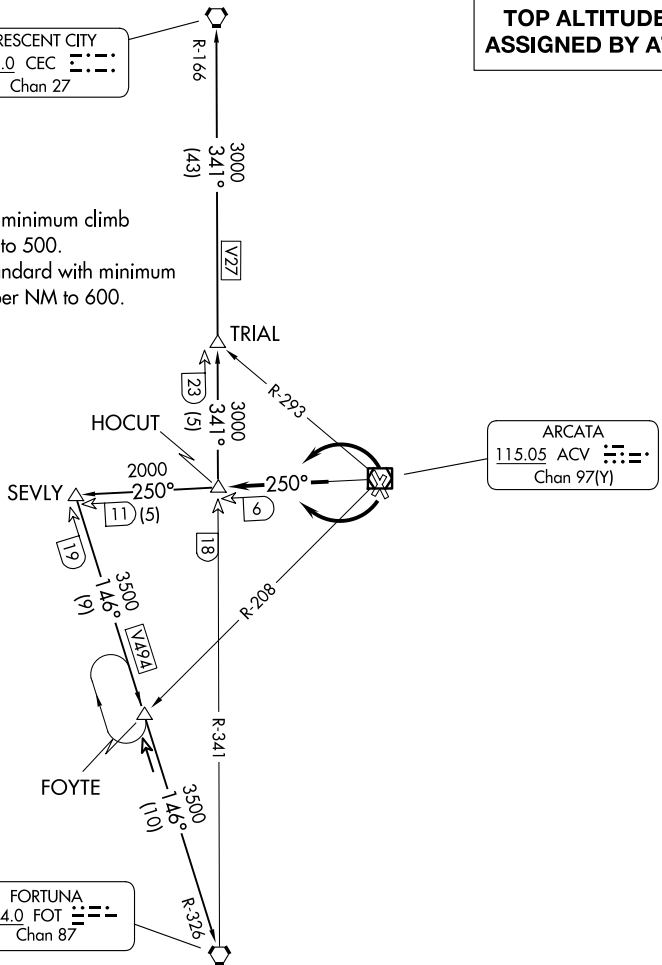
OAKLAND FSS  
 122.6  
 SEATTLE CENTER  
 124.85 306.3

CRESCENT CITY  
 109.0 CEC  
 Chan 27

**TOP ALTITUDE:  
 ASSIGNED BY ATC**

**TAKEOFF MINIMUMS**

Rwy 19, 32: Standard.  
 Rwy 1: Standard with a minimum climb  
 of 360' per NM to 500.  
 Rwy 14: 400-2 1/2 or standard with minimum  
 climb of 382' per NM to 600.



SW-2, 11 JUN 2026 to 09 JUL 2026

SW-2, 11 JUN 2026 to 09 JUL 2026

NOTE: Chart not to scale.

**DEPARTURE ROUTE DESCRIPTION**

TAKEOFF RUNWAYS 1 and 32: Climbing left turn on ACV R-250, thence. . . .  
TAKEOFF RUNWAYS 14 and 19: Climbing right turn on ACV R-250, thence. . . .  
 . . . on (transition) or (assigned route).  
CRESCENT CITY TRANSITION (HOCUT5.CEC): From over HOCUT INT on FOT R-341  
 and CEC R-166 to CEC VORTAC.  
FORTUNA TRANSITION (HOCUT5.FOT): From over HOCUT INT on ACV R-250 to  
 SEVLY INT, then via FOT R-326 to FOT VORTAC.

**HOCUT FIVE DEPARTURE**  
 (HOCUT5.HOCUT) 120CT17

ARCATA/EUREKA, CALIFORNIA  
 CALIFORNIA REDWOOD COAST-HUMBOLDT COUNTY (ACV)