

RNAV (GPS) RWY 6

COEUR D'ALENE (COE)

WAAS CH 70608 W06A	APP CRS 051°	Rwy Ldg 7400 TDZE 2291 Apt Elev 2320
--	------------------------	---

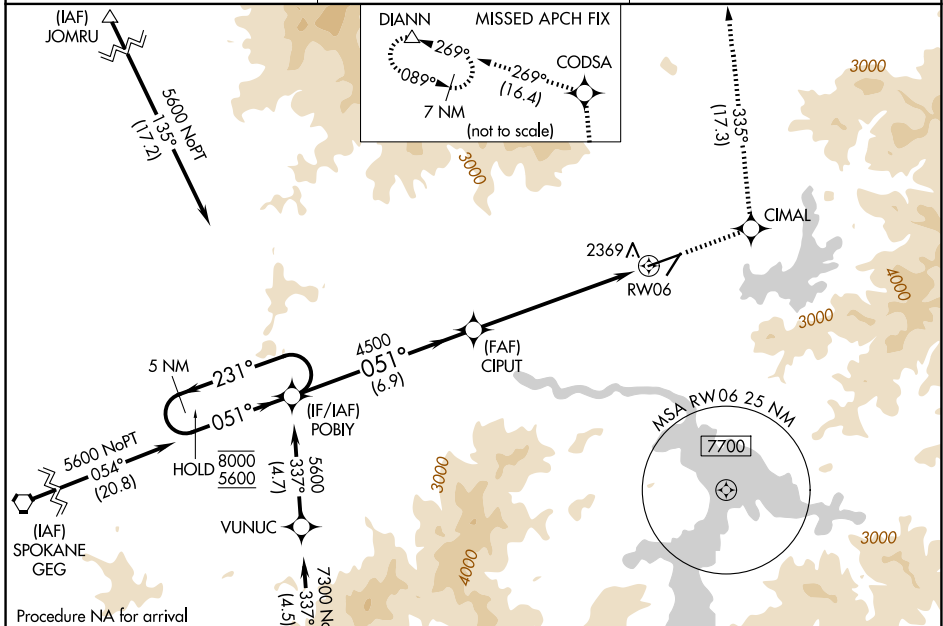
RNP APCH - GPS.

⚠ Circling Rwy 2 NA at night. For uncompensated Baro-VNAV systems, LNAV/VNAV NA below -21°C or above 53°C. Circling NA for Cat D southeast of Rwy 6-24.

MALSR

MISSED APPROACH: Climb to 7000 direct CIMAL and on track 335° to CODSA and on track 269° to DIANN and hold.

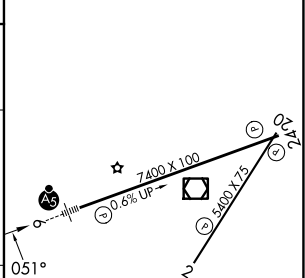
AWOS-3PT 135.075	SPOKANE APP CON 132.1 263.0	UNICOM 122.8 (CTAF)
----------------------------	---------------------------------------	-------------------------------



Procedure NA for arrival on GEG VORTAC airway radials 006 CW 142.

5 NM Holding Pattern	7000	CIMAL	tr 335°	CODSA	tr 269°	DIANN
8000 ← 231°	POBIY	CIPUT				
5600 → 051°		4500				
GP 3.00° TCH 56		4500	1.3 NM to RW06			
	6.9 NM	5.4 NM	1.3			

ELEV 2320	D	TDZE 2291
-----------	---	-----------



CATEGORY	A	B	C	D
LPV DA		2491-1/2	200 (200-1/2)	
LNAV/VNAV DA		2654-3/4	363 (400-3/4)	
LNAV MDA	2740-1/2	449 (500-1/2)	2740-1	449 (500-1)
CIRCLING	2740-1 420 (500-1)	2880-1 560 (600-1)	3020-2 700 (700-2)	3180-2 3/4 860 (900-2 3/4)

MIRL Rwy 2-20

HIRL Rwy 6-24

REIL Rws 2 and 24

NW-1, 11 JUN 2026 to 09 JUL 2026

NW-1, 11 JUN 2026 to 09 JUL 2026