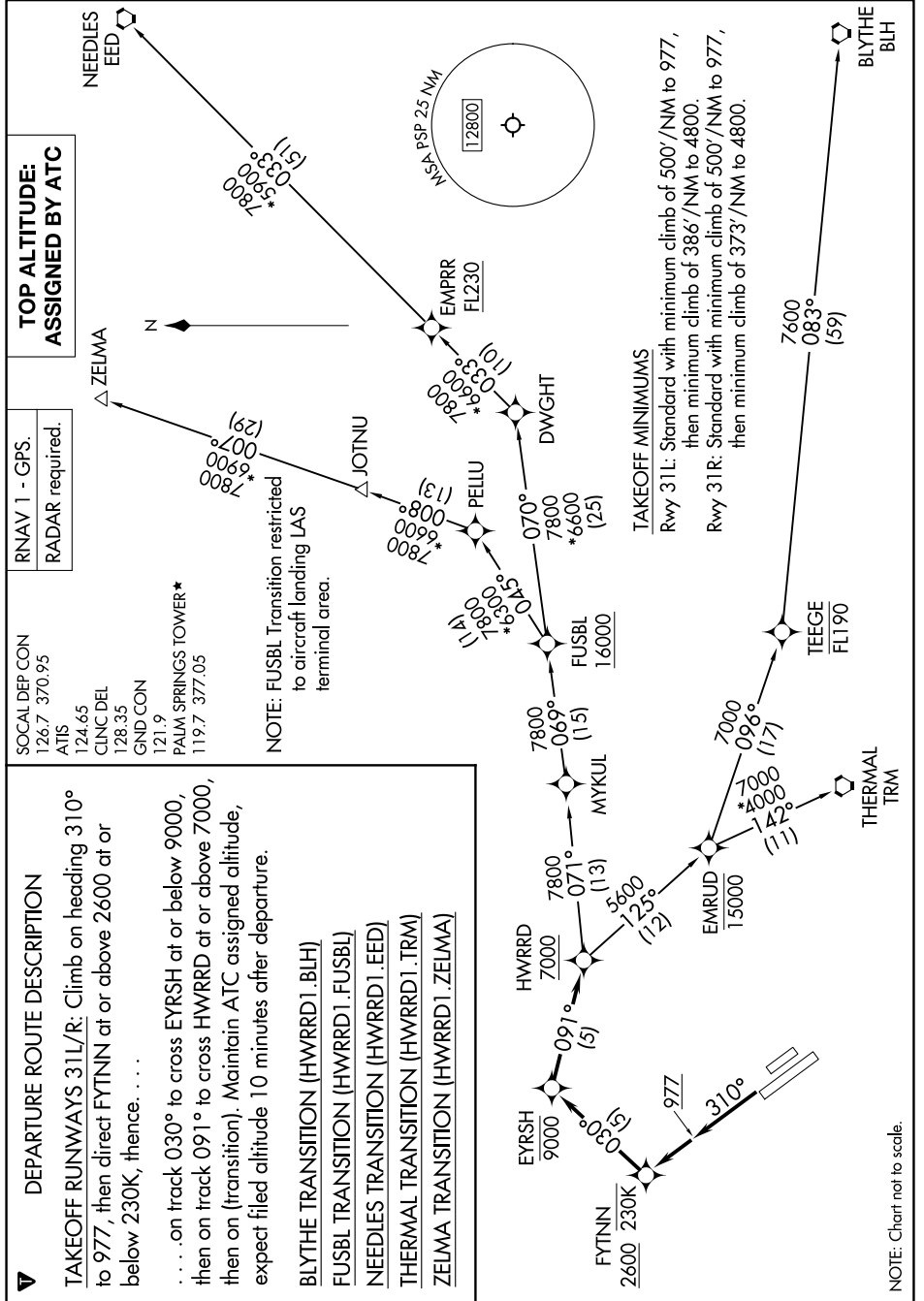


HWRRD ONE DEPARTURE (RNAV)

AL-545 (FAA)

PALM SPRINGS INTL (PSP)
PALM SPRINGS, CALIFORNIA

9202 Tnr 60 of 202009 11 'E-MS



**TOP ALTITUDE:
ASSIGNED BY ATC**

RNAV 1 - GPS.
RADAR required.

SOCAL DEP CON
126.7 370.95
ATIS
124.65
CLNCDEL
128.35
GND CON
121.9
PALM SPRINGS TOWER*
119.7 377.05

DEPARTURE ROUTE DESCRIPTION

TAKEOFF RUNWAYS 31L/R: Climb on heading 310° to 977, then direct FTYNN at or above 2600 at or below 230K, thence. . . .

. . . on track 030° to cross EYRSH at or below 9000, then on track 091° to cross HWRRD at or above 7000, then on (transition). Maintain ATC assigned altitude, expect filed altitude 10 minutes after departure.

BLYTHE TRANSITION (HWRRD1.BLH)

FUSBL TRANSITION (HWRRD1.FUSBL)

NEEDLES TRANSITION (HWRRD1.EED)

THERMAL TRANSITION (HWRRD1.TRM)

ZELMA TRANSITION (HWRRD1.ZELMA)

NOTE: FUSBL Transition restricted to aircraft landing LAS terminal area.

TAKEOFF MINIMUMS

Rwy 31L: Standard with minimum climb of 500'/NM to 977, then minimum climb of 386'/NM to 4800.

Rwy 31R: Standard with minimum climb of 500'/NM to 977, then minimum climb of 373'/NM to 4800.

NOTE: Chart not to scale.

SW-3, 11 JUN 2026 to 09 JUL 2026