

RDBUL ONE ARRIVAL (RNAV)

AL-545 (FAA)

PALM SPRINGS, CALIFORNIA

SW-3, 11 JUN 2026 to 09 JUL 2026 'E-W'S

ARRIVAL ROUTE DESCRIPTION

- CURV TRANSITION (CURV.RDBUL1)
- PARKER TRANSITION (PKE.RDBUL1)
- YORRK TRANSITION (YORRK.RDBUL1)
- ZELMA TRANSITION (ZELMA.RDBUL1)

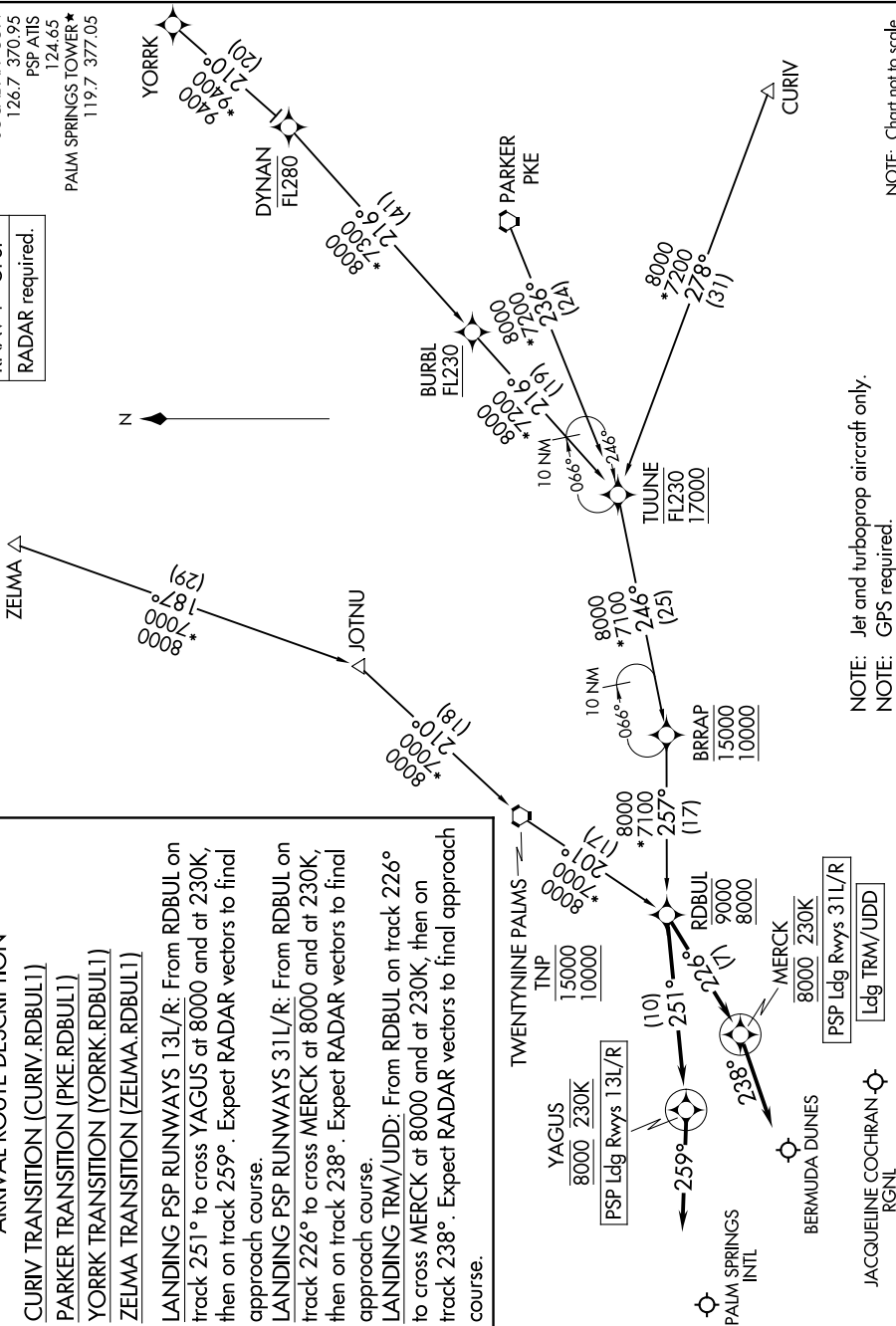
LANDING PSP RUNWAYS 13L/R: From RDBUL on track 251° to cross YAGUS at 8000 and at 230K, then on track 259°. Expect RADAR vectors to final approach course.

LANDING PSP RUNWAYS 31L/R: From RDBUL on track 226° to cross MERCK at 8000 and at 230K, then on track 238°. Expect RADAR vectors to final approach course.

LANDING TRM/UDD: From RDBUL on track 226° to cross MERCK at 8000 and at 230K, then on track 238°. Expect RADAR vectors to final approach course.

SOCAL APP CON
126.7 370.95
PSP ATIS
124.65
PALM SPRINGS TOWER*
119.7 377.05

RNAV 1 - GPS.
RADAR required.



NOTE: Jet and turboprop aircraft only.
NOTE: GPS required.

NOTE: Chart not to scale.

RDBUL ONE ARRIVAL (RNAV)

(RDBUL.RDBUL1) 12JUN25

PALM SPRINGS, CALIFORNIA

SW-3, 11 JUN 2026 to 09 JUL 2026