

APP CRS 308°	Rwy Ldg TDZE Apt Elev	8500 430 477
------------------------	-----------------------------	---

RNAV (RNP) Y RWY 31L

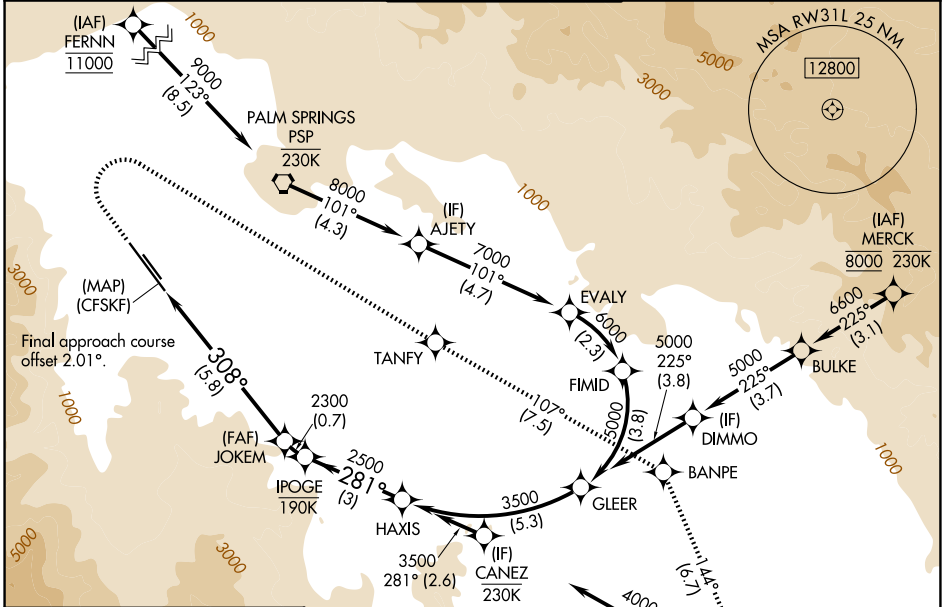
PALM SPRINGS INTL (PSP)

RNP AR APCH - GPS, RF, min RNP 0.30. Authorization required.

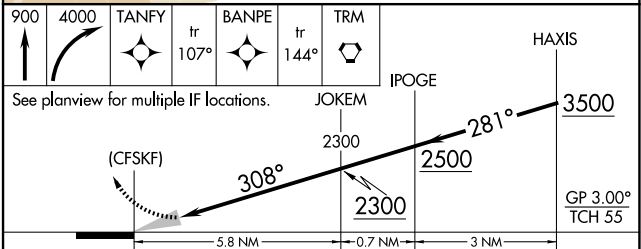
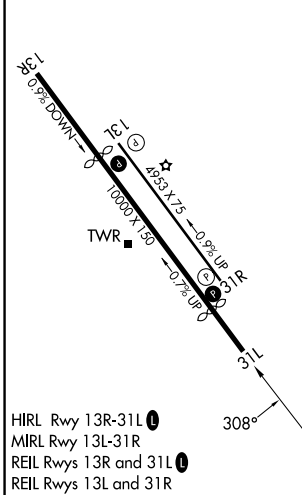
For uncompensated Baro-VNAV systems, procedure NA below 4°C or above 54°C.

MISSED APPROACH: Climb to 900 then climbing right turn to 4000 direct TANFY and track 107° to BANPE and track 144° to TRM VORTAC and hold. Missed approach requires minimum climb of 365 feet per NM to 2200; if unable to meet climb gradient, see RNAV (GPS) Z RWY 31L.

ATIS 124.65	SOCAL APP CON 126.7 370.95 135.275 251.1	PALM SPRINGS TOWER* 119.7 (CTAF) 377.05	GND CON 121.9	UNICOM 122.95
-----------------------	--	---	-------------------------	-------------------------



ELEV 477	D	TDZE 430
----------	----------	----------



CATEGORY	A	B	C	D
RNP 0.13 DA		680- ³ / ₄	250 (300- ³ / ₄)	
RNP 0.30 DA		718- ⁷ / ₈	288 (300- ⁷ / ₈)	

AUTHORIZATION REQUIRED

SW-3, 11 JUN 2026 to 09 JUL 2026

SW-3, 11 JUN 2026 to 09 JUL 2026