

APP CRS	Rwy Ldg	6857
130°	TDZE	451
	Apt Elev	477

RNAV (RNP) Z RWY 13R

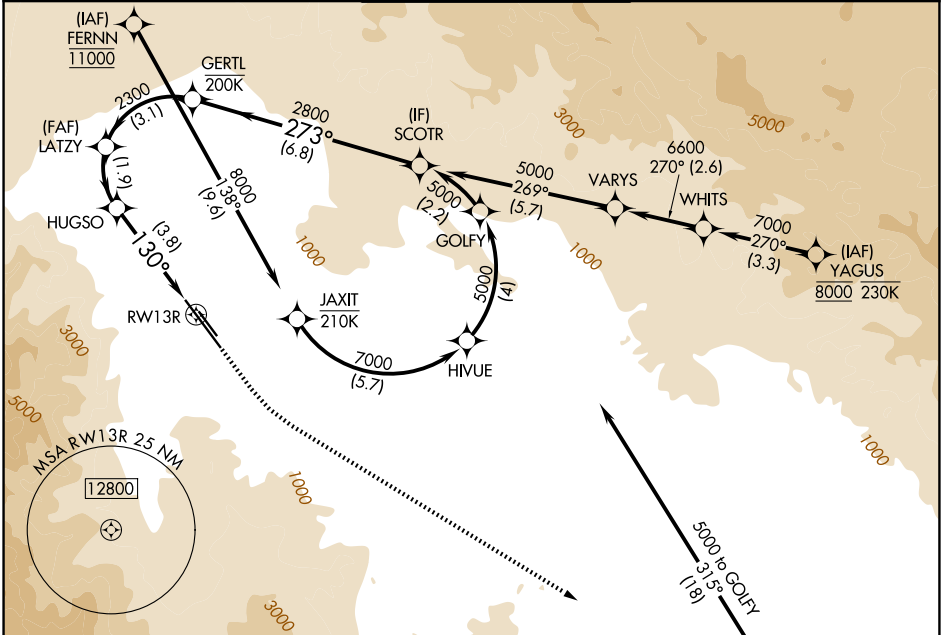
PALM SPRINGS INTL (PSP)

RNP AR APCH-GPS, RF, min RNP 0.50. Authorization required.

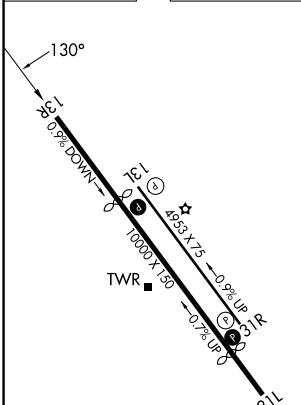
▼ For uncompensated Baro-VNAV systems, procedure NA below 4°C or above 54°C.

MISSED APPROACH: Climb to 900 then climbing left turn to 4000 direct TRM VORTAC and hold.

ATIS 124.65	SOCAL APP CON 126.7 370.95 135.275 251.1	PALM SPRINGS TOWER * 119.7 (CTAF) 0 377.05	GND CON 121.9	UNICOM 122.95
-----------------------	--	--	-------------------------	-------------------------



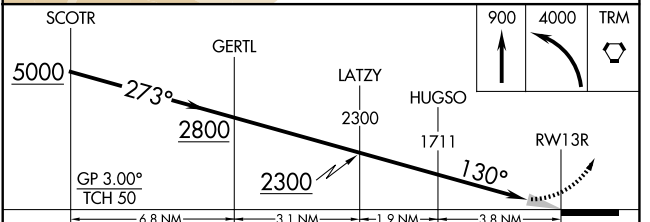
ELEV 477	D	TDZE 451
----------	----------	----------



HIRL Rwy 13R-31L **1**
 MIRL Rwy 13L-31R
 REIL Rwy 13R and 31L **1**
 REIL Rwy 13L and 31R

Procedure NA for arrival on TRM VORTAC airway radials 263 CW 021.

(IAF) THERMAL TRM 4 NM



CATEGORY	A	B	C	D
RNP 0.10 DA		749- ⁷ / ₈	298 (300- ⁷ / ₈)	
RNP 0.30 DA		882-1 ¹ / ₄	431 (500-1 ¹ / ₄)	

AUTHORIZATION REQUIRED

SW-3, 11 JUN 2026 to 09 JUL 2026

SW-3, 11 JUN 2026 to 09 JUL 2026