

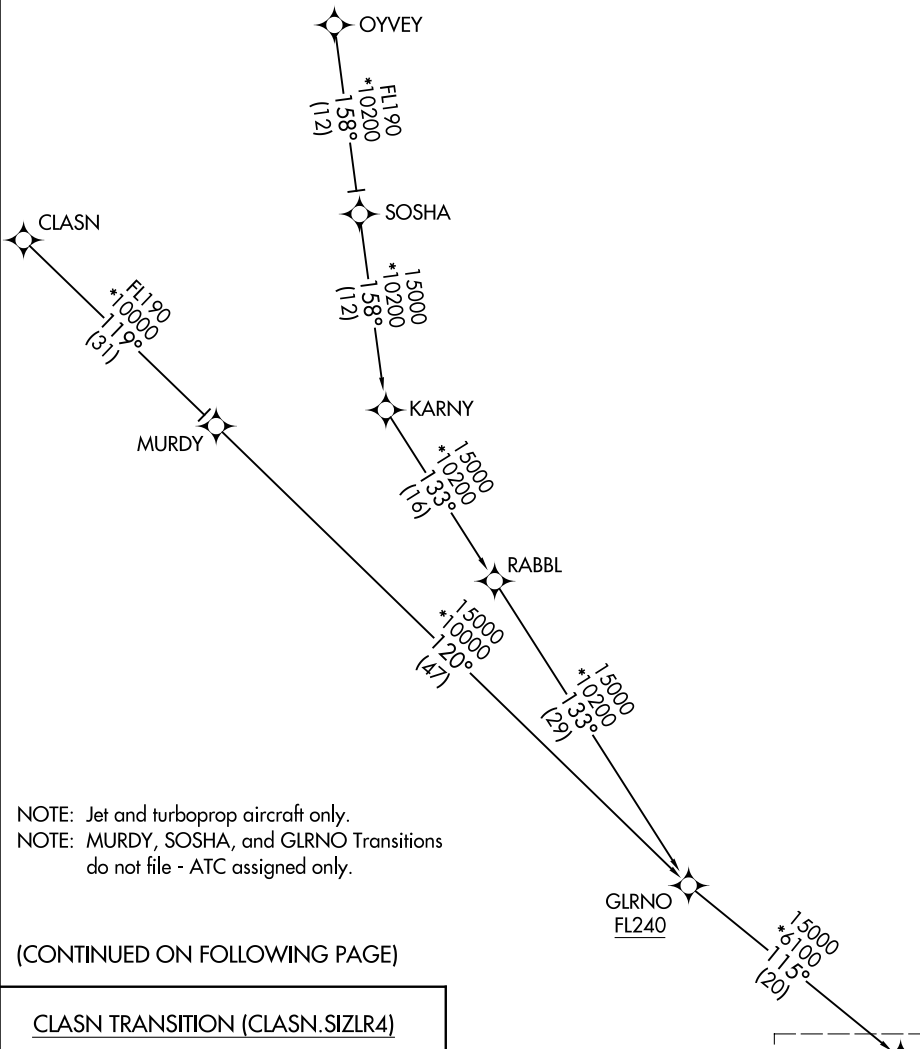
# SIZLR FOUR ARRIVAL (RNAV) Transition Routes

PALM SPRINGS, CALIFORNIA

RNAV 1 - DME/DME/IRU or GPS.

RADAR required.

SOCAL APP CON  
134.0 278.3  
PSP ATIS  
124.65  
PALM SPRINGS TOWER\*  
119.7 377.05



NOTE: Jet and turboprop aircraft only.  
NOTE: MURDY, SOSHA, and GLRNO Transitions do not file - ATC assigned only.

(CONTINUED ON FOLLOWING PAGE)

- CLASN TRANSITION (CLASN.SIZLR4)
- GLRNO TRANSITION (GLRNO.SIZLR4)
- MURDY TRANSITION (MURDY.SIZLR4)
- OYVEY TRANSITION (OYVEY.SIZLR4)
- SOSHA TRANSITION (SOSHA.SIZLR4)

NOTE: Chart not to scale.

See following page for arrival routes

# SIZLR FOUR ARRIVAL (RNAV) Transition Routes

PALM SPRINGS, CALIFORNIA

SW-3, 11 JUN 2026 to 09 JUL 2026

SW-3, 11 JUN 2026 to 09 JUL 2026

# SIZLR FOUR ARRIVAL (RNAV) Arrival Routes

PALM SPRINGS, CALIFORNIA

9200 UN 60 01 9200 UN 11 '8-MS

