

LOC I-SBD 109.3	APP CRS 057°	Rwy Ldg 10000
		TDZE 1103
		Apt Elev 1159

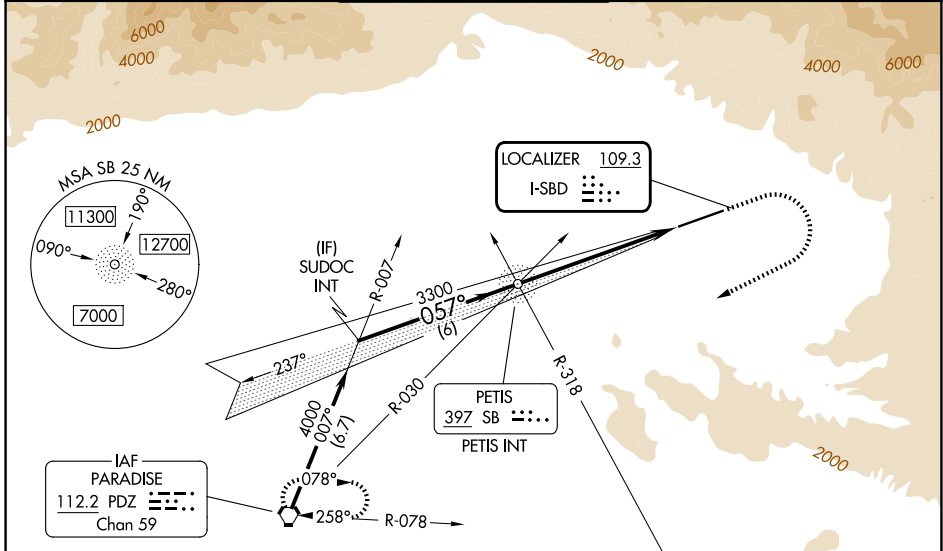
ILS or LOC Z RWY 6

SAN BERNARDINO INTL (SBD)

⚠ Circling NA northwest of Rwy 6-24. When local altimeter setting not received, use Ontario altimeter setting and increase DA to 1426 feet and all visibilities ¼ SM; increase all MDA 80 feet and S-LOC Cats C/D and Circling Cat C visibility ¼ SM.

MISSED APPROACH: Climb to 2000 then climbing right turn to 6000 direct PDZ VORTAC and hold, continue climb-in-hold to 6000.
 * Missed approach requires minimum climb of 340 feet per NM to 4000; if unable to meet climb gradient, see LOC Y RWY 6.

D-ATIS 124.175	SOCAL APP CON 127.0 318.2	SAN BERNARDINO TOWER * 119.45 (CTAF) 0	GND CON 121.8	UNICOM 122.975
--------------------------	-------------------------------------	--	-------------------------	--------------------------



Procedure NA for arrival on PDZ VORTAC
 airway radials 012 CW 030.

ELEV 1159	D	TDZE 1103
-----------	----------	-----------

HIRL Rwy 6-24 0 REIL Rwy 6 and 24 0				
FAF to MAP 6.1 NM				
Knots	60	90	120	150
Min:Sec	6:06	4:04	3:03	2:26

GS 3.00° TCH 51	SUDOC INT 4000 — 057° — 3300		SB NDB PETIS INT 3118		2000 — 6000 — PDZ
	6 NM		6.1 NM		
CATEGORY	A	B	C	D	
S-ILS 6*		1353-¾	250 (200-¾)		
S-LOC 6*	1740-1	637 (600-1)	1740-1¾	637 (600-1¾)	
CIRCLING	1740-1	581 (600-1)	1760-1¾	2640-3	1481 (1500-3)

SW-3, 11 JUN 2026 to 09 JUL 2026

SW-3, 11 JUN 2026 to 09 JUL 2026