

APP CRS <b>057°</b>	Rwy Ldg <b>10000</b>
	TDZE <b>1103</b>
	Apt Elev <b>1159</b>

# RNAV (RNP) X RWY 6

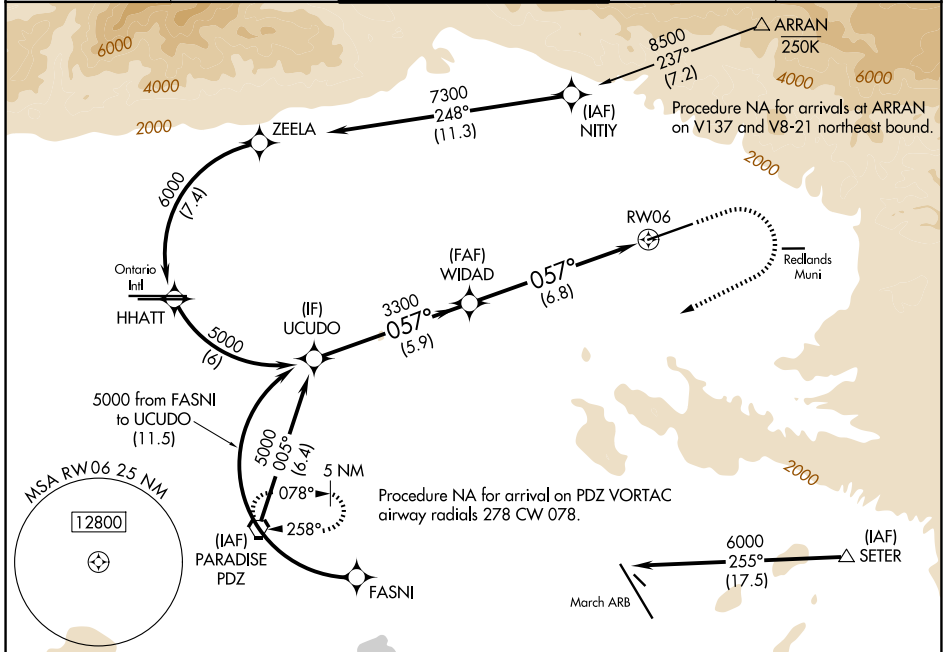
SAN BERNARDINO INTL (SBD)

**RNP AR APCH-GPS. Authorization required. From NITTY or SETER: RF.**

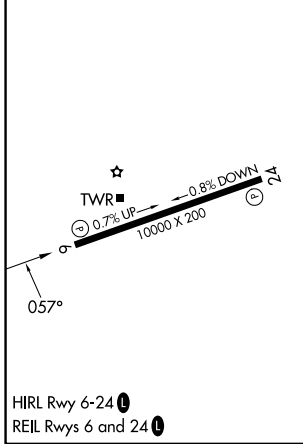
MISSED APPROACH: Climb to 2000 then climbing right turn to 6000 direct PDZ VORTAC and hold.

\*Missed approach requires minimum climb of 350 feet per NM to 4000; if unable to meet climb gradient, see RNAV (GPS) Y RWY 6.

D-ATIS <b>124.175</b>	SOCAL APP CON <b>127.0 318.2</b>	SAN BERNARDINO TOWER * <b>119.45 (CTAF) 0</b>	GND CON <b>121.8</b>	UNICOM <b>122.975</b>
--------------------------	-------------------------------------	--	-------------------------	--------------------------



ELEV 1159	<b>D</b>	TDZE 1103
-----------	----------	-----------



	UCUDO	WIDAD	2000	6000	PDZ
	5000	3300	↑	↘	⬠
	GP 3.00° TCH 51				
	5.9 NM		6.8 NM		
CATEGORY	A	B	C	D	
RNP 0.15 DA*	1353/40 250 (200-¾)				
RNP 0.30 DA*	1403/45 300 (300-⅞)				
<b>AUTHORIZATION REQUIRED</b>					

SW-3, 11 JUN 2026 to 09 JUL 2026

SW-3, 11 JUN 2026 to 09 JUL 2026