

LOC I-VNY 111.3	APP CRS 164°	Rwy Ldg TDZE Apt Elev	6569 793 802
---------------------------	------------------------	-----------------------------	---

ILS Z RWY 16R

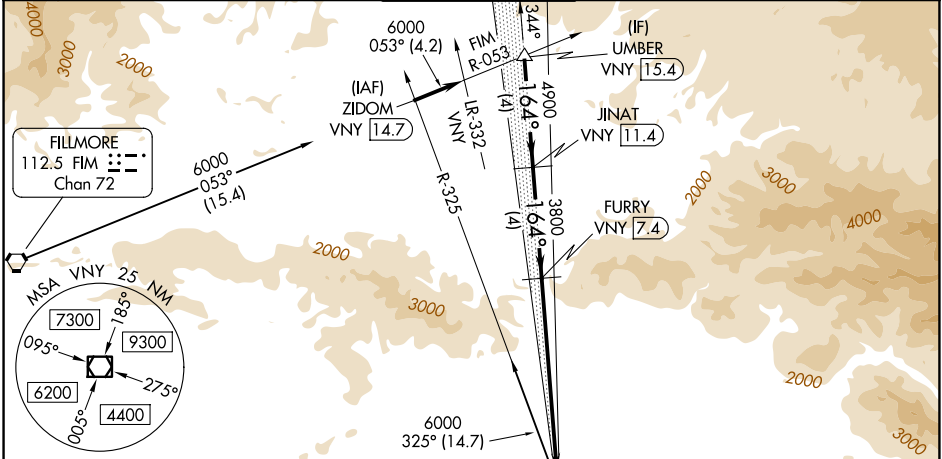
VAN NUYS (VNY)

⚠ DME required. RADAR required for monitoring of missed approach. When local altimeter setting not received, use Burbank altimeter setting and increase DA to 1114. Rwy 16R helicopter visibility reduction below RVR 4000 NA. For inop ALS, increase S-ILS 16R all Cats visibility to RVR 5000.

MALS R 

MISSED APPROACH: Climb to cross VNY 1.5 DME south of VNY VOR/DME at or below 1750 then climbing left turn to 4600 on VNY VOR/DME R-152 to HIRVI/VNY VOR/DME 8 DME, direct SMO VOR/DME then on SMO VOR/DME R-267 then on VTU VOR/DME R-087 to VTU VOR/DME and hold.

ATIS 127.55	SOCAL APP CON 120.4 360.6 (NORTH) 134.2 338.2 (WEST)	VAN NUYS TOWER * 119.3 (CTAF) 0 239.0	GND CON 121.7	UNICOM 122.95
-----------------------	--	--	-------------------------	-------------------------



FILLMORE
112.5 FIM
Chan 72

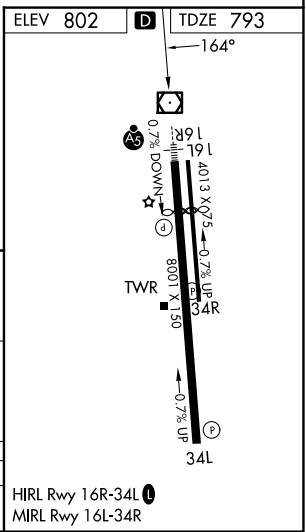
VENTURA
VTU
116.55
Chan 112(Y)

MISSED APCH FIX
R-311
311°

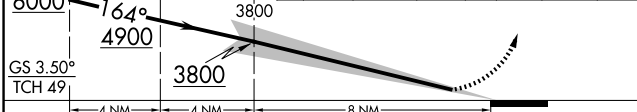
VAN NUYS
113.1 VNY
Chan 78

LOCALIZER 111.3
I-VNY


A descent to at or below 1750 may be required when executing an early missed approach.



UMBER VNY 15.4	JINAT VNY 11.4	FURRY VNY 7.4	VNY 1.5 1750	4600 VNY R-152	HIRVI VNY 8	SMO R-267 & VTU R-087	VTU
----------------	----------------	---------------	-----------------	----------------	-------------	-----------------------	-----



CATEGORY	A	B	C	D
S-ILS 16R		1095/40	302 (300-¾)	

HIRL Rwy 16R-34L 
MIRL Rwy 16L-34R

SW-3, 11 JUN 2026 to 09 JUL 2026

SW-3, 11 JUN 2026 to 09 JUL 2026