

9202 TUN 60 of 9202 NUN 14 'E-MS

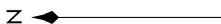
SOCAL DEP CON  
134.2 338.2  
CLNC DEL  
126.6 239.0  
CPDLC

NOTE: DME/DME/IRU or GPS required.

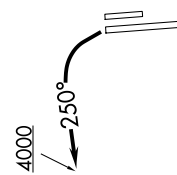
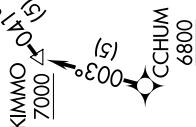
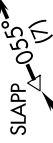
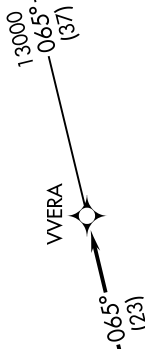
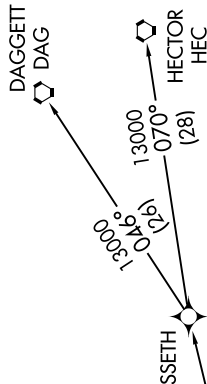
NOTE: RNAV 1.

NOTE: RADAR required.

NOTE: This departure procedure authorized for turboprop aircraft only.



**TOP ALTITUDE:**  
**13000**



### TAKEOFF MINIMUMS

Rwys 16L/R, 34R: NA-ATC.

Rwy 34L: Standard with minimum climb of 370' per NM to 7100.

NOTE: Chart not to scale.

### DEPARTURE ROUTE DESCRIPTION

**TAKEOFF RUNWAY 34L:** Climbing left turn heading 250° to 4000, expect vectors to cross CCHUM at or above 6800, then on track 003° to cross KIMMO at or above 7000, then on depicted route to WVERA, thence . . . .

. . . . on (transition). Maintain 13000. Expect filed altitude 10 minutes after departure.

**DAGGETT TRANSITION (WVERA2.DAG)**

**HECTOR TRANSITION (WVERA2.HEC)**