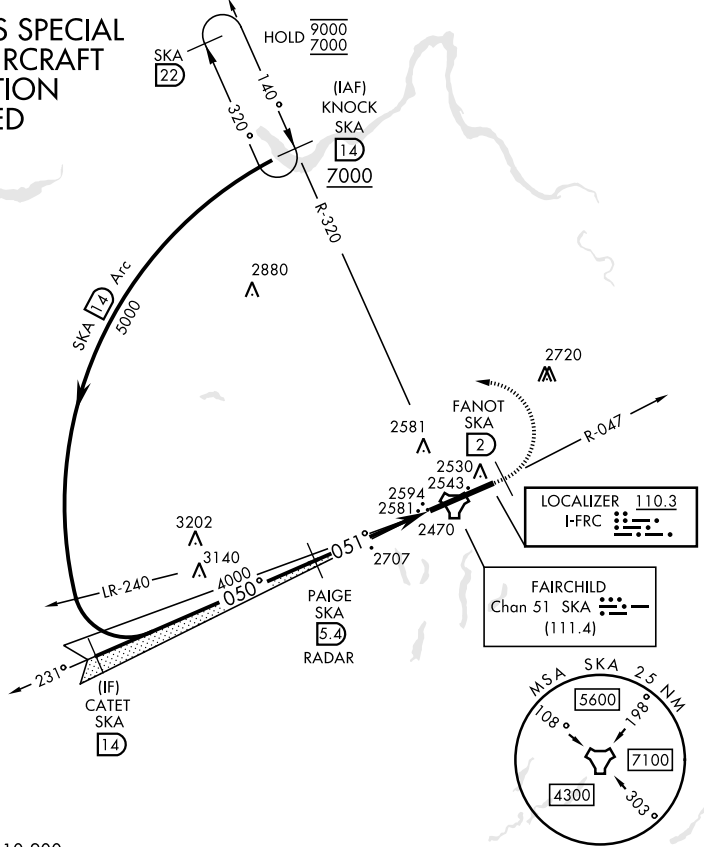


SPOKANE, WASHINGTON

ILS RWY 5 (CAT II)

LOC I-FRC 110.3	APCH CRS 051°	Rwy Idg 13,899 TDZE 2462 Arpt Elev 2462	[USAF]	FAIRCHILD AFB (KSKA)
RADAR required for KNOCK holding.		ALSF-2	MISSED APPROACH: Climb to 7000 via SKA TACAN R-047. At FANOT turn left hdg 275° to intcp SKA R-320 to KNOCK and hold, continue climb in hold to 7000.	
ATIS 257.625	SPOKANE APP CON 123.75 282.25 (208° - 028°) 133.35 263.0 (029° - 207°)	TOWER 120.35 233.7	GND CON 123.6 275.8	

CATEGORY II ILS SPECIAL AIRCREW & AIRCRAFT CERTIFICATION REQUIRED



EMERG SAFE ALT 100 NM 10,900					ELEV 2462	TDZE 2462
CATET SKA 14 Intcp Lczt	PAIGE SKA 5.4 RADAR	7000 SKA R-047	FANOT SKA 2	hdg 275°	SKA R-320	
5000	4000	4.6 NM	1192'			
GS 3.00° TCH 58						
CATEGORY	A	B	C	D	E	
S-ILS 5	RA 98/12		100	DA 2562		
SPOKANE, WASHINGTON					FAIRCHILD AFB (KSKA)	
Amtd 2 03NOV22					HIRL Rwy 5-23 TDZL/RCLS Rwy 5	

SPOKANE, WASHINGTON 47°37'N-117°39'W FAIRCHILD AFB (KSKA)

ILS RWY 5 (CAT II)

NW-1, 11 JUN 2026 to 09 JUL 2026

NW-1, 11 JUN 2026 to 09 JUL 2026