

SPOKANE, WASHINGTON

ILS or LOC RWY 23

LOC I-SKA 110.3	APCH CRS 231°	Rwy Idg 13,899 TDZE 2423 Arprt Elev 2462
---------------------------	-------------------------	---

[USAF]

FAIRCHILD AFB (KSKA)

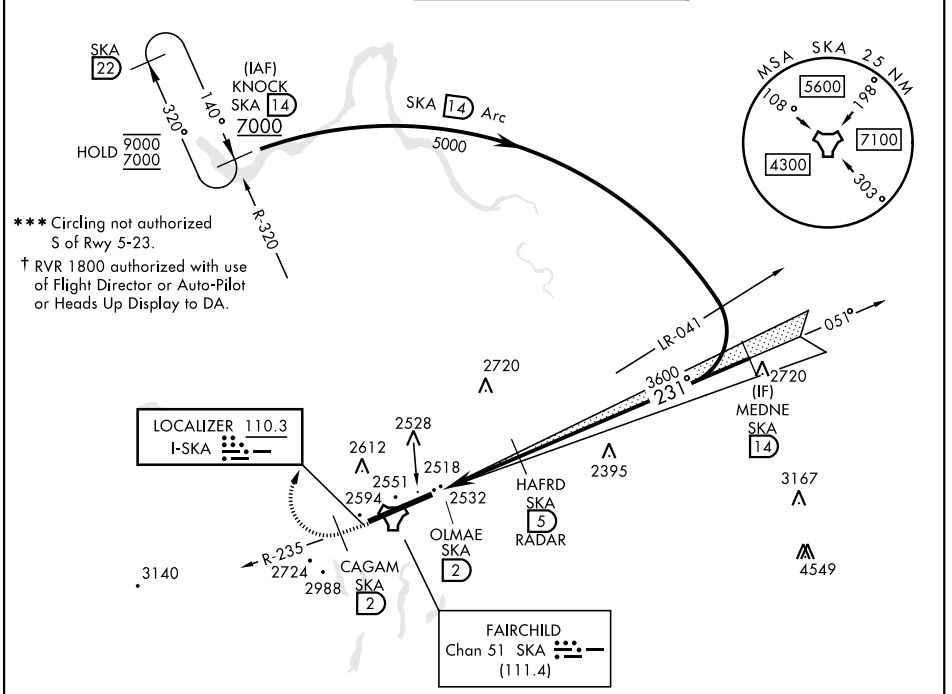
DME or RADAR reqrd for LOC. RADAR reqrd for KNOCK holding.

ALSF-1

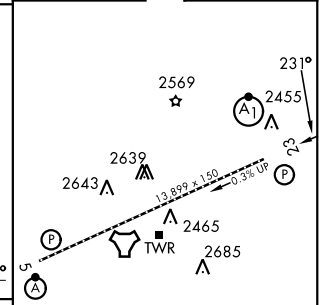
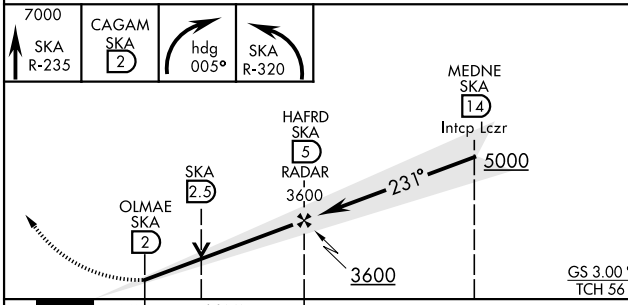
MISSED APPROACH: Climb to 7000 via SKA R-235. At CAGAM, turn right heading 005° to intcp SKA R-320 to KNOCK and hold, cont climb in hold to 7000.

*** When ALS inop, increase RVR to 40 and vis to 3/4 mile.
** When ALS inop, increase RVR to 55 and vis to 1 mile.

ATIS 257.625	SPOKANE APP CON 123.75 282.25 (208° - 028°) 133.35 263.0 (029° - 207°)	TOWER 120.35 233.7	GND CON 123.6 275.8
------------------------	--	------------------------------	-------------------------------



EMERG SAFE ALT 100 NM 10,900	ELEV 2462	TDZE 2423
------------------------------	-----------	-----------



CATEGORY	A	B	C	D	E
S-ILS 23 *†	2623/24		200	(200-1/2)	
S-LOC 23 **	2800/24	377 (400-1/2)	2800/35	377	(400-3/8)
CIRCLING ***	2900-1	2920-1	3040-1 1/2	3040-2	3600-3
	438 (500-1)	458 (500-1)	578 (600-1 1/2)	578 (600-2)	1138 (1200-3)
HIRL Rwy 5-23 TDZL/RCLS Rwy 5					
FAF to MAP 3.0 NM					
Knots	60	90	120	150	180
Min:Sec	3:00	2:00	1:30	1:12	1:00

SPOKANE, WASHINGTON 47°37'N-117°39'W FAIRCHILD AFB (KSKA)

Amdt 4 03NOV22

ILS or LOC RWY 23

NW-1, 11 JUN 2026 to 09 JUL 2026

NW-1, 11 JUN 2026 to 09 JUL 2026