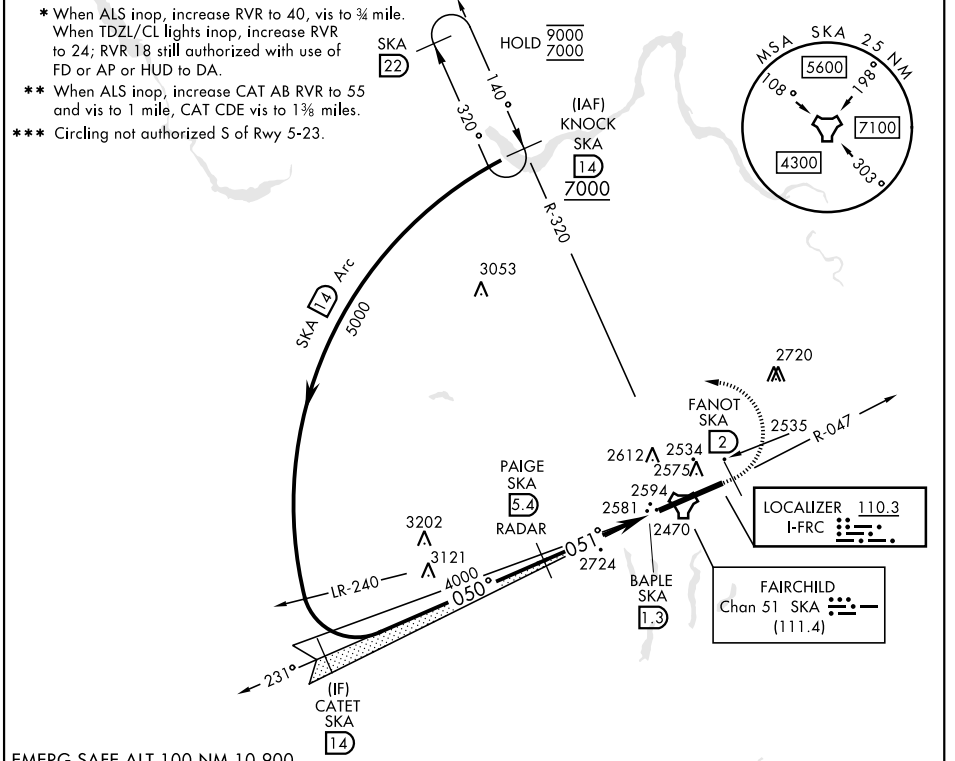


SPOKANE, WASHINGTON

ILS or LOC RWY 5

LOC I-FRC 110.3	APCH CRS 051°	Rwy ldg 13,899 TDZE 2462 Arpt Elev 2462	[USAF]	FAIRCHILD AFB (KSKA)
DME or RADAR reqrd for LOC. RADAR reqrd for KNOCK holding.			ALS-F-2	MISSED APPROACH: Climb to 7000 via SKA TACAN R-047. At FANOT turn left hdg 275° to intcp SKA R-320 to KNOCK and hold, cont climb in hold to 7000.
ATIS 257.625	SPOKANE APP CON 123.75 282.25 133.35 263.0 (208° - 028°) (029° - 207°)		TOWER 120.35 233.7	GND CON 123.6 275.8



NW-1, 11 JUN 2026 to 09 JUL 2026

NW-1, 11 JUN 2026 to 09 JUL 2026

EMERG SAFE ALT 100 NM 10,900					ELEV 2462	TDZE 2462	
CATEGORY	A	B	C	D	E		
S-ILS 5 *	2662/18		200	(200-1/2)		HIRL Rwy 5-23 TDZL/RCLS Rwy 5	
S-LOC 5 **	2960/24 498 (500-1/2)		2960/50 498 (500-1)		FAF to MAP 4.2 NM		
CIRCLING ***	2960-1 498 (500-1)		3040-1 1/2 578 (600-1 1/2)	3040-2 578 (600-2)	3600-3 1138 (1200-3)	Knots	60 90 120 150 180
						Min:Sec	4:12 2:48 2:06 1:41 1:24

SPOKANE, WASHINGTON

47°37'N-117°39'W

FAIRCHILD AFB (KSKA)

Amtd 6 03NOV22

ILS or LOC RWY 5