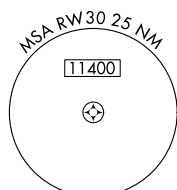
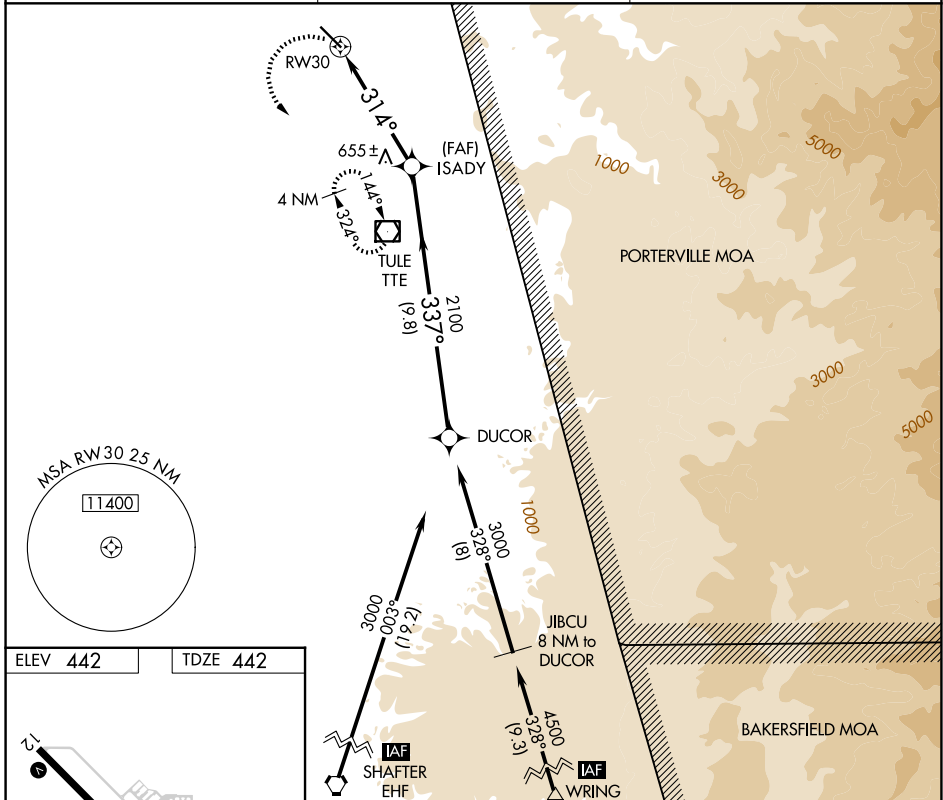


APP CRS **314°**  
 Rwy Ldg **5960**  
 TDZE **442**  
 Apt Elev **442**

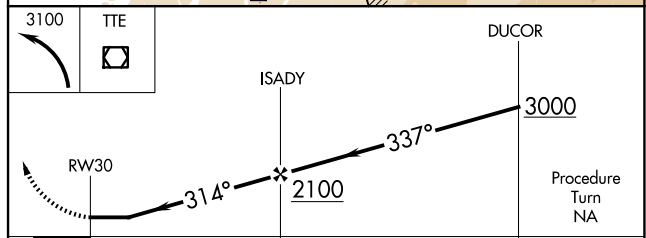
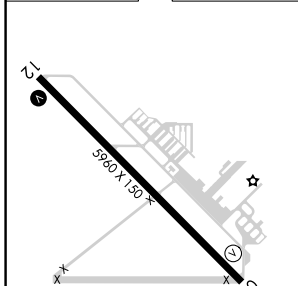
**GPS RWY 30**  
 PORTERVILLE MUNI (P'TV)

**IAF** ARM APPROACH MODE PRIOR TO IAF.  
**NA** Helicopter visibility reduction below ¾ SM NA.  
 MISSED APPROACH: Climbing left turn to 3100 direct TTE  
 VOR/DME and hold.

AWOS-3PT **134.625**      BAKERFIELD APP CON\* **119.075**      UNICOM **122.8 (CTAF)**



ELEV **442**      TDZE **442**



CATEGORY	A	B	C	D
S-30	900-1	458 (500-1)	900-1¼ 458 (500-1¼)	900-1½ 458 (500-1½)
CIRCLING	900-1	458 (500-1)	940-1½ 498 (500-1½)	1080-2 638 (700-2)

SW-2, 11 JUN 2026 to 09 JUL 2026

SW-2, 11 JUN 2026 to 09 JUL 2026