

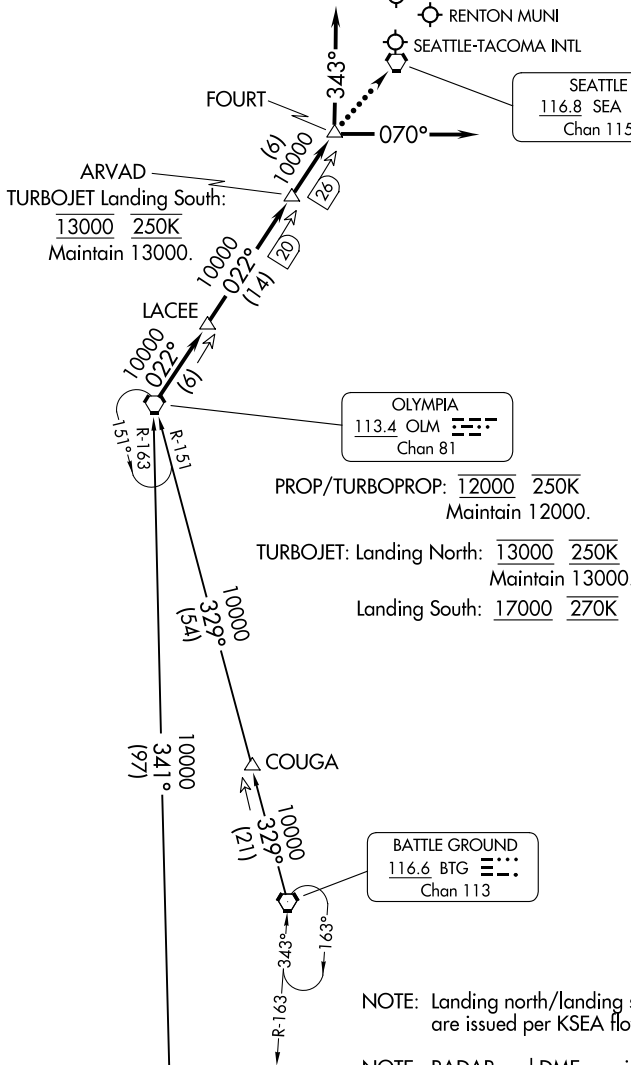
# OLYMPIA TWO ARRIVAL

SEATTLE APP CON  
 125.6 273.45  
 BFI ATIS  
 127.75  
 PAE ATIS  
 128.65  
 RNT ATIS  
 126.95  
 SEA D-ATIS  
 118.0

SEATTLE PAINE FLD INTL

BOEING FLD/  
 KING COUNTY INTL  
 RENTON MUNI  
 SEATTLE-TACOMA INTL

SEATTLE  
 116.8 SEA  
 Chan 115



OLYMPIA  
 113.4 OLM  
 Chan 81

PROP/TURBOPROP: 12000 250K  
 Maintain 12000.

TURBOJET: Landing North: 13000 250K  
 Maintain 13000.

Landing South: 17000 270K

BATTLE GROUND  
 116.6 BTG  
 Chan 113

NOTE: Landing north/landing south restrictions are issued per KSEA flow.

NOTE: RADAR and DME required.

NEWBERG  
 117.4 UBG  
 Chan 121

(NARRATIVE ON FOLLOWING PAGE)

NOTE: Chart not to scale.

# OLYMPIA TWO ARRIVAL

NW-1, 11 JUN 2026 to 09 JUL 2026

NW-1, 11 JUN 2026 to 09 JUL 2026

ARRIVAL ROUTE DESCRIPTION

BATTLE GROUND TRANSITION (BTG.OLM2): From over BTG VORTAC on BTG R-329 to COUGA, then on BTG R-329 and OLM R-151 to OLM VORTAC. Thence. . . .

NEWBERG TRANSITION (UBG.OLM2): From over UBG VOR/DME on UBG R-341 and OLM R-163 to OLM VORTAC. Thence. . . .

. . . . from over OLM VORTAC on OLM R-022 to LACEE, then on OLM R-022 to ARVAD, then on OLM R-022 to FOURT, thence. . . .

. . . . LANDING NORTH SEA/BFI: Depart FOURT heading 070° for vectors to final approach course.

. . . . LANDING SOUTH SEA/BFI: Depart FOURT heading 343° for vectors to final approach course.

. . . . LANDING SEATTLE PAINE FLD INTL: Depart FOURT heading 343° for vectors to final approach course.

. . . . LANDING RENTON MUNI: Depart FOURT heading 343° for vectors to final approach course.

LOST COMMUNICATIONS: From over FOURT, proceed direct SEA VORTAC.

NW-1, 11 JUN 2026 to 09 JUL 2026

NW-1, 11 JUN 2026 to 09 JUL 2026