

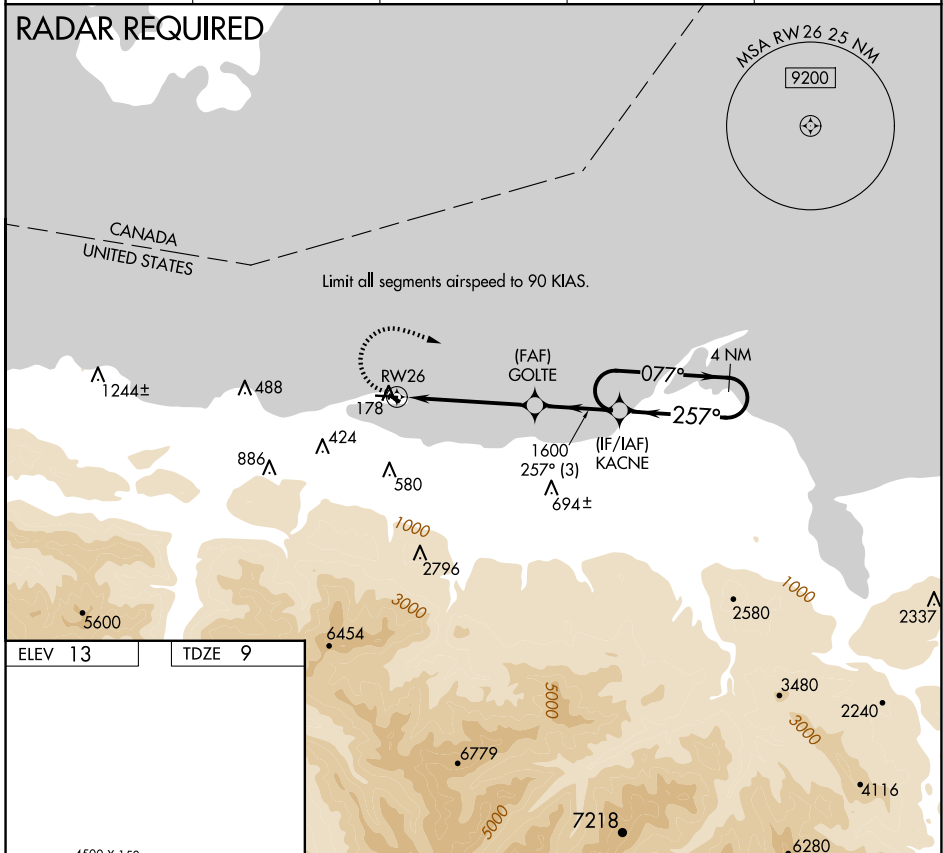
APP CRS 257°	Rwy Idg 4500
	TDZE 9
	Apt Elev 13

COPTER RNAV (GPS) RWY 26

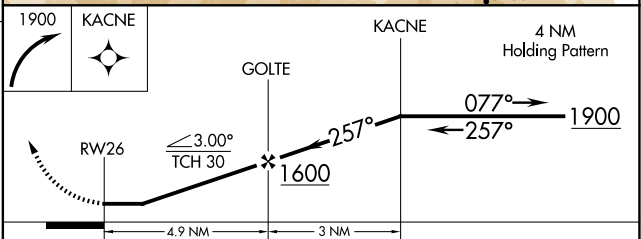
PORT ANGELES CGAS (NOW)

▼ ▲	Use William R Fairchild Intl altimeter setting; when not received, use Whidbey Island NAS (Ault Fld) altimeter setting and increase MDA 120 feet. DME/DME RNP-0.3 NA. Prior permission required.	MISSED APPROACH: Climbing right turn to 1900 direct KACNE and hold.
----------------------	--	---

AWOS-3P 118.325	WHIDBEY APP CON 118.2 285.65	PORT ANGELES AIR 127.7 345.0	CLNC DEL 124.15	UNICOM 122.975 (CTAF)
---------------------------	--	--	---------------------------	---------------------------------



ELEV 13	TDZE 9
MIRL Rwy 8-26	



CATEGORY	COPTER
LNAV MDA	560-1 551 (600-1)

NW-1, 11 JUN 2026 to 09 JUL 2026

NW-1, 11 JUN 2026 to 09 JUL 2026