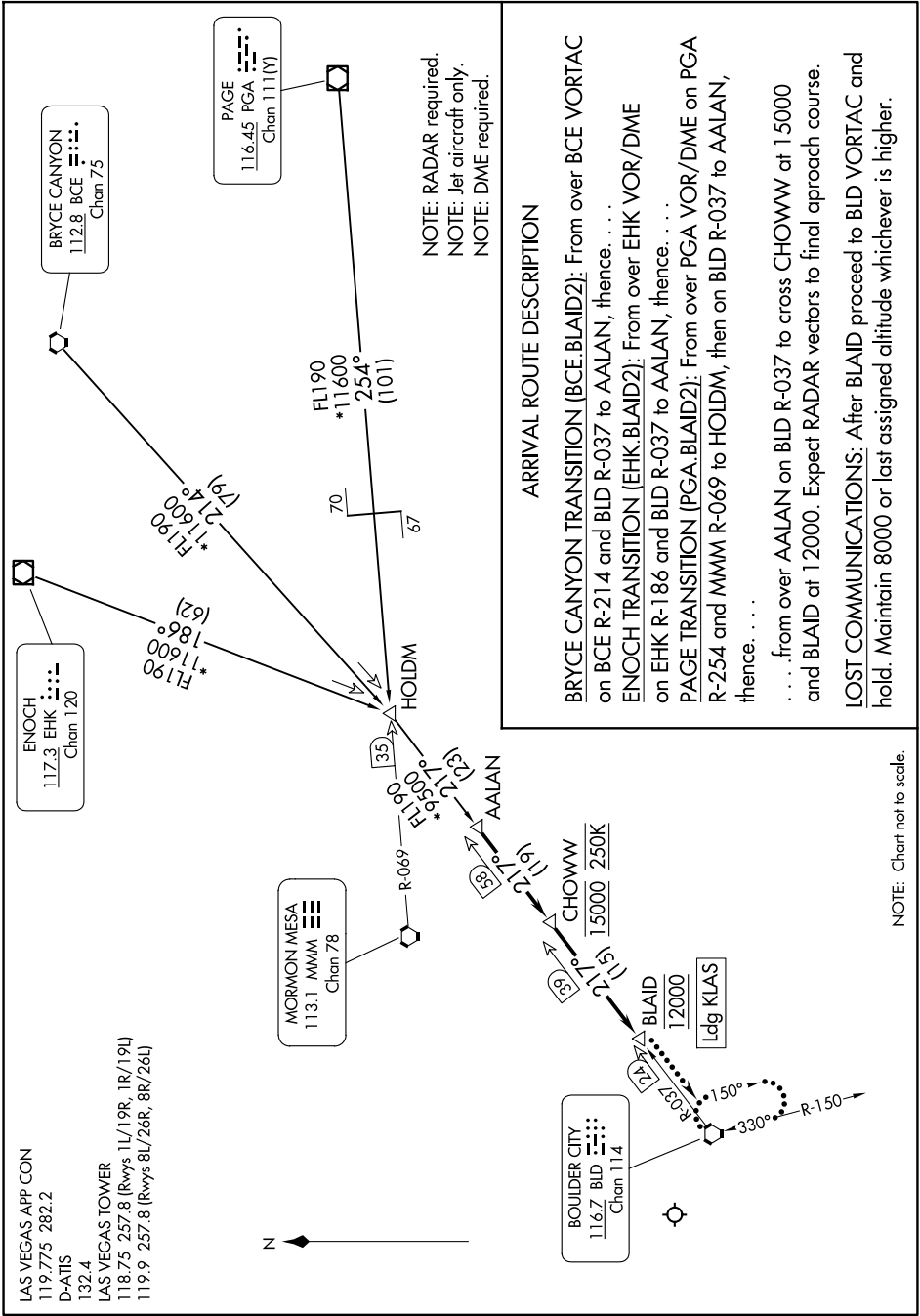


BLAID TWO ARRIVAL

AL-662 (FAA)

HARRY REID INTL (LAS)
LAS VEGAS, NEVADA

SW-4, 11 JUN 2026 to 09 JUL 2026



ARRIVAL ROUTE DESCRIPTION

BRYCE CANYON TRANSITION (BCE.BLAID2): From over BCE VORTAC on BCE R-214 and BLD R-037 to AALAN, thence. . . .

ENOCH TRANSITION (EHK.BLAID2): From over EHK VOR/DME on EHK R-186 and BLD R-037 to AALAN, thence. . . .

PAGE TRANSITION (PGA.BLAID2): From over PGA VOR/DME on PGA R-254 and MMM R-069 to HOLDM, then on BLD R-037 to AALAN, thence. . . .

. . . .from over AALAN on BLD R-037 to cross CHOWW at 15000 and BLAID at 12000. Expect RADAR vectors to final approach course.

LOST COMMUNICATIONS: After BLAID proceed to BLD VORTAC and hold. Maintain 8000 or last assigned altitude whichever is higher.

NOTE: RADAR required.
NOTE: Jet aircraft only.
NOTE: DME required.

NOTE: Chart not to scale.

SW-4, 11 JUN 2026 to 09 JUL 2026