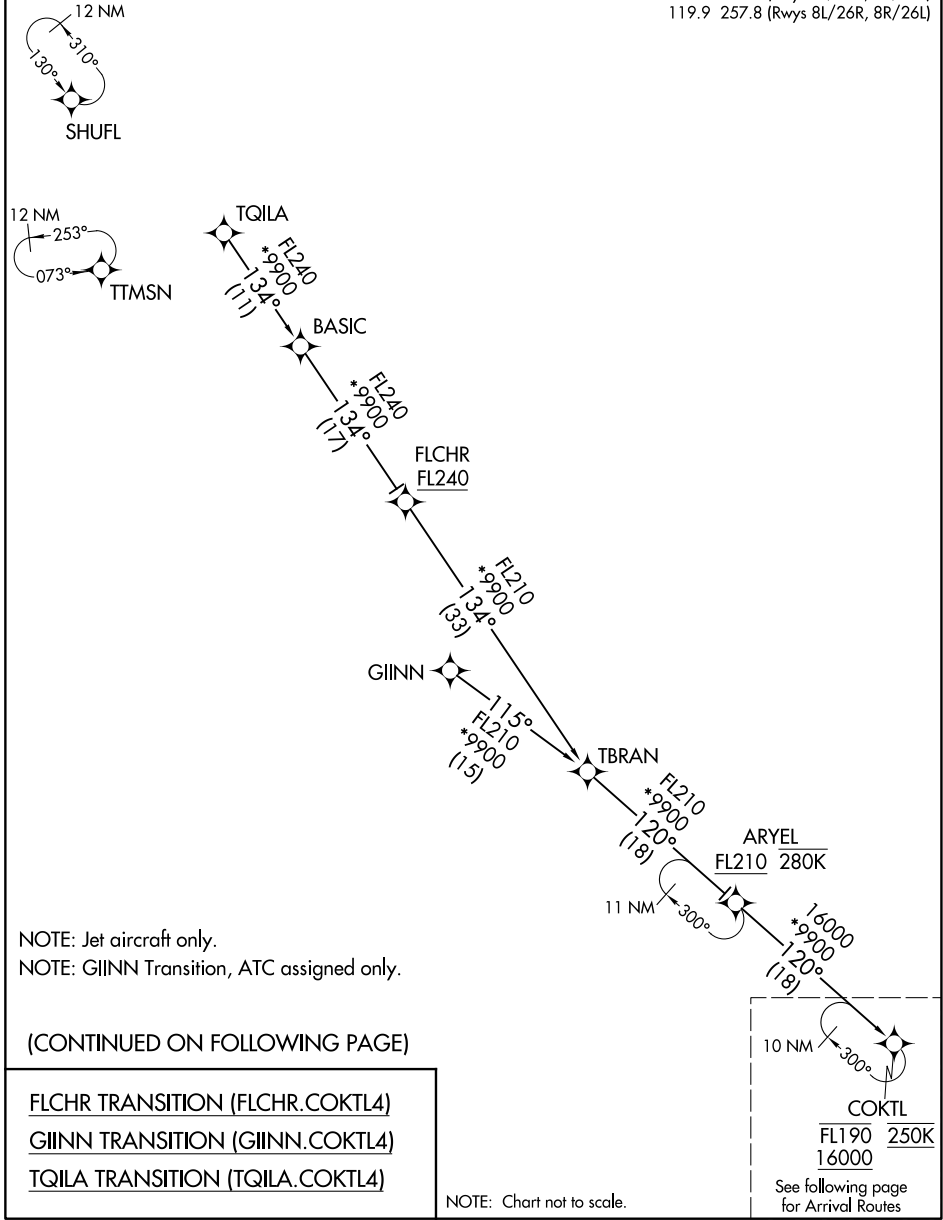


COKTL FOUR ARRIVAL (RNAV) Transition Routes

RNAV 1 - DME/DME/IRU or GPS.
RADAR required.

LAS VEGAS APP CON
125.025 379.15
D-ATIS
132.4
LAS VEGAS TOWER
118.75 257.8 (Rwys 1L/19R, 1R/19L)
119.9 257.8 (Rwys 8L/26R, 8R/26L)



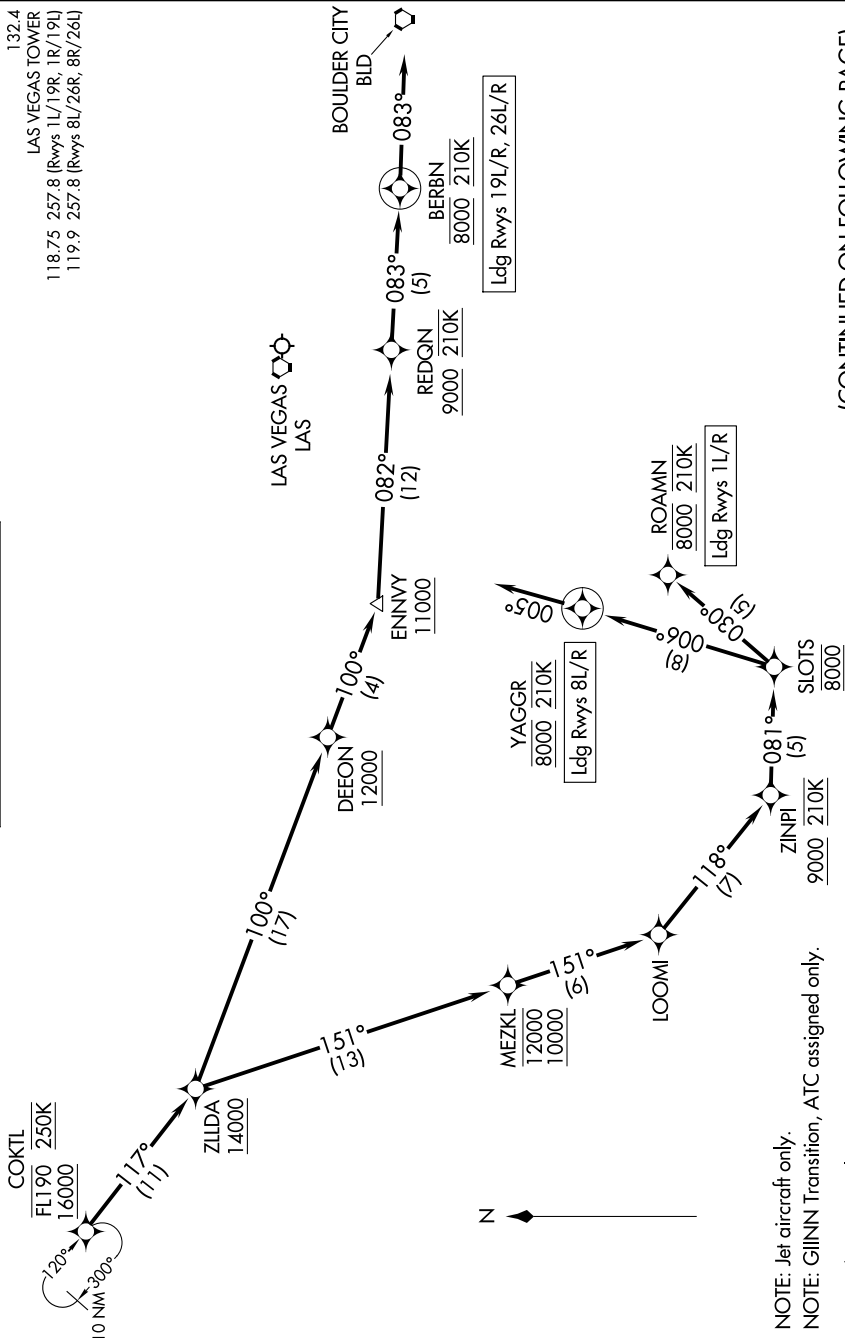
SW-4, 11 JUN 2026 to 09 JUL 2026

SW-4, 11 JUN 2026 to 09 JUL 2026

COKTL FOUR ARRIVAL (RNAV) Arrival Routes

LAS VEGAS APP CON
125.025 379.15
D-ATIS
132.4
LAS VEGAS TOWER
118.75 257.8 (Rwys 1L/19R, 1R/19L)
119.9 257.8 (Rwys 8L/26R, 8R/26L)

RNAV 1 - DME/DME/IRU or GPS.
RADAR required.



(CONTINUED ON FOLLOWING PAGE)

ARRIVAL ROUTE DESCRIPTION

From COKTL on track 117° to cross ZLLDA at or above 14000.

LANDING RUNWAYS 1L/R: From ZLLDA on track 151° to cross MEZKL between 10000 and 12000, then on track 151° to LOOMI, then on track 118° to cross ZINPI at or above 9000 and at 210K, then on track 081° to cross SLOTS at 8000, then on track 030° to cross ROAMN at 8000 and at 210K. Expect ILS or LOC RWY 1L approach or RADAR vectors to final approach course.

LANDING RUNWAYS 8L/R: From ZLLDA on track 151° to cross MEZKL between 10000 and 12000, then on track 151° to LOOMI, then on track 118° to cross ZINPI at or above 9000 and at 210K, then on track 081° to cross SLOTS at 8000, then on track 006° to cross YAGGR at 8000 and at 210K, then on track 005°. Expect RADAR vectors to final approach course.

LANDING RUNWAYS 19L/R, 26L/R: From ZLLDA on track 100° to cross DEEON at or above 12000, then on track 100° to cross ENNVY at or above 11000, then on track 082° to cross REDQN at or above 9000 and at 210K, then on track 083° to cross BERBN at 8000 and at 210K, then on track 083°. Expect RADAR vectors to final approach course.

LOST COMMUNICATIONS

LANDING RUNWAY 1L: At ROAMN proceed on the ILS or LOC RWY 1L approach.

LANDING RUNWAY 8R: At YAGGR proceed on the RNAV (RNP) RWY 8R approach, if unable, proceed via last track to intercept the final approach course; if unable, maintain 7000 direct LAS VORTAC then direct BLD VORTAC and then on the ILS or LOC RWY 26L approach.

LANDING RUNWAY 26L: At BERBN proceed on the ILS or LOC RWY 26L approach.

LANDING RUNWAY 26R: At BERBN proceed on the ILS or LOC RWY 26R approach.

SW-4, 11 JUN 2026 to 09 JUL 2026

SW-4, 11 JUN 2026 to 09 JUL 2026