

GIDGT FOUR DEPARTURE (RNAV) Departure Routes

SW-4, 11 JUN 2026 to 09 JUL 2026

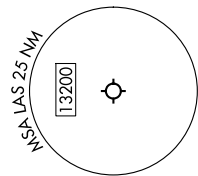
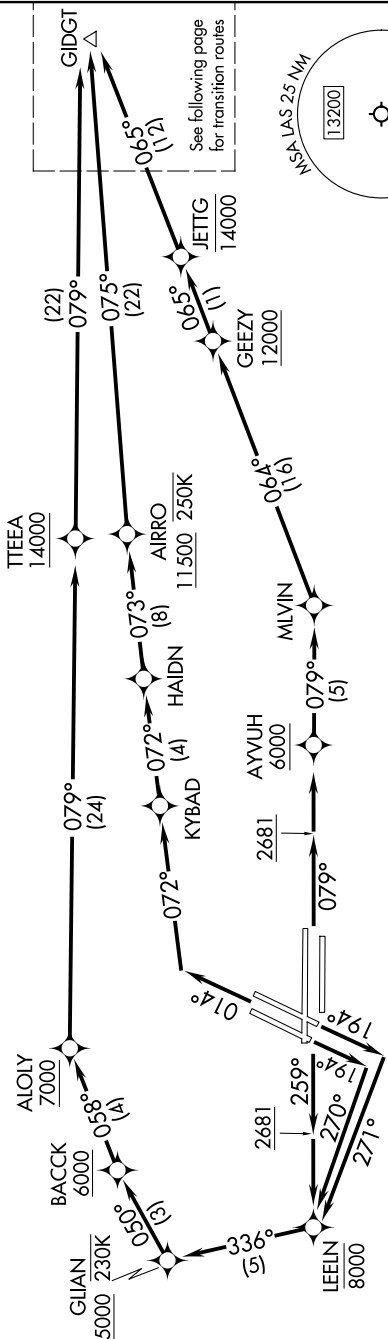
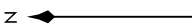
**TOP ALTITUDE:
FL190**

RNAV 1 - DME/DME/IRU or GPS.
RADAR required for non-GPS equipped aircraft.

- LAS VEGAS DEP CON 133.95 353.7
- D-ATIS 132.4
- CINC DEL 118.0
- CPDLC 121.1 270.8 E of 1R/19L
- GND CON 121.9 254.3 W of 1L/19R
- LAS VEGAS TOWER 118.75 257.8 (Rwys 1L/19R, 1R/19L)
- 119.9 257.8 (Rwys 8L/26R, 8R/26L)

TAKEOFF MINIMUMS

- Rwy 1L: Standard with minimum climb of 500'/NM to 2681, then 286'/NM to 4900.
- Rwy 1R: Standard with minimum climb of 500'/NM to 2681, then 295'/NM to 4900.
- Rwys 8L/R, 19L/R: Standard with minimum climb of 500'/NM to 2681.
- Rwy 26L: Standard with minimum climb of 500'/NM to 2681, then 204'/NM to 4100.
- Rwy 26R: Standard with minimum climb of 500'/NM to 2681, then 271'/NM to 4100.



NOTE: Turbbojet only.
NOTE: SSKEE and IWANS Transition assigned by ATC - do not file.

(CONTINUED ON FOLLOWING PAGE)

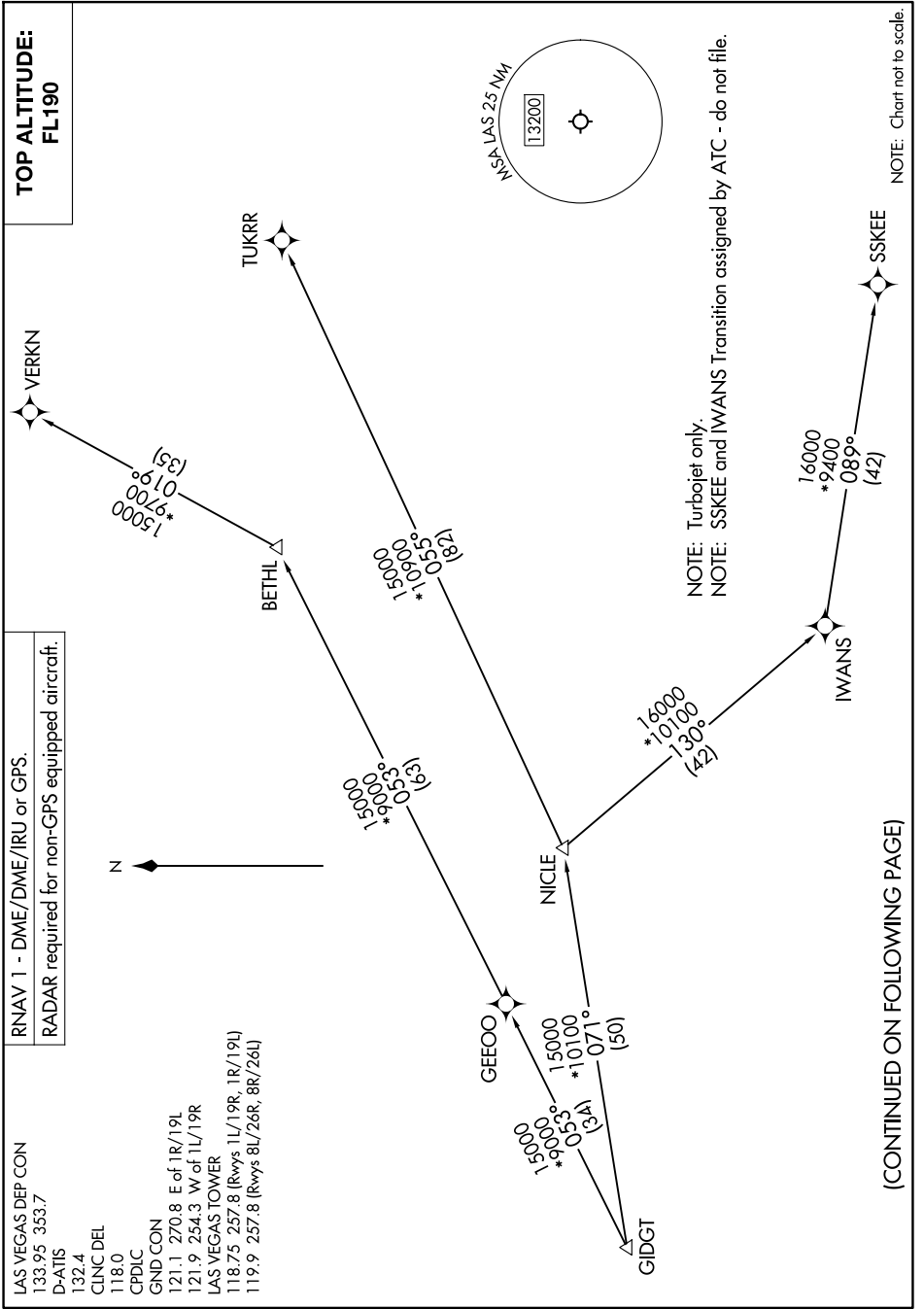
NOTE: Chart not to scale.

GIDGT FOUR DEPARTURE (RNAV) Departure Routes

SW-4, 11 JUN 2026 to 09 JUL 2026

GIDGT FOUR DEPARTURE (RNAV) Transition Routes

SW-4, 11 JUN 2026 to 09 JUL 2026



(CONTINUED ON FOLLOWING PAGE)

SW-4, 11 JUN 2026 to 09 JUL 2026



DEPARTURE ROUTE DESCRIPTION

TAKEOFF RUNWAYS 1L/R: Climb on heading 014° to intercept course 072° to KYBAD, then on track 072° to HAIDN, then on track 073° to cross AIRRO at or above 11500 and at or below 250K, then on track 075° to GIDGT, thence. . . .

TAKEOFF RUNWAYS 8L/R: Climb on heading 079° to 2681, then direct to cross AYVUH at or above 6000, then on track 079° to MLVIN, then on track 064° to cross GEEZY at or above 12000, then on track 065° to cross JETTG at or below 14000, then on track 065° to GIDGT, thence. . . .

TAKEOFF RUNWAY 19L: Climb on heading 194° to intercept course 271° to cross LEELN at or below 8000, then on track 336° to cross GLIAN at or above 5000 at or below 230K, then on track 050° to cross BACCK at or above 6000, then on track 058° to cross ALOLY at or above 7000, then on track 079° to cross TTEEA at or above 14000, then on track 079° to GIDGT, thence. . . .

TAKEOFF RUNWAY 19R: Climb on heading 194° to intercept course 270° to cross LEELN at or below 8000, then on track 336° to cross GLIAN at or above 5000 and at or below 230K, then on track 050° to cross BACCK at or above 6000, then on track 058° to cross ALOLY at or above 7000, then on track 079° to cross TTEEA at or above 14000, then on track 079° to GIDGT, thence. . . .

TAKEOFF RUNWAYS 26L/R: Climb on heading 259° to 2681, then direct to cross LEELN at or below 8000, then on track 336° to cross GLIAN at or above 5000 and at or below 230K, then on track 050° to cross BACCK at or above 6000, then on track 058° to cross ALOLY at or above 7000, then on track 079° to cross TTEEA at or above 14000, then on track 079° to GIDGT, thence. . . .

. . . .on (transition). Maintain FL190. Expect filed altitude 10 minutes after departure.

IWANS TRANSITION (GIDGT4.IWANS)

SSKEE TRANSITION (GIDGT4.SSKEE)

TUKRR TRANSITION (GIDGT4.TUKRR)

VERKN TRANSITION (GIDGT4.VERKN)

SW-4, 11 JUN 2026 to 09 JUL 2026

SW-4, 11 JUN 2026 to 09 JUL 2026